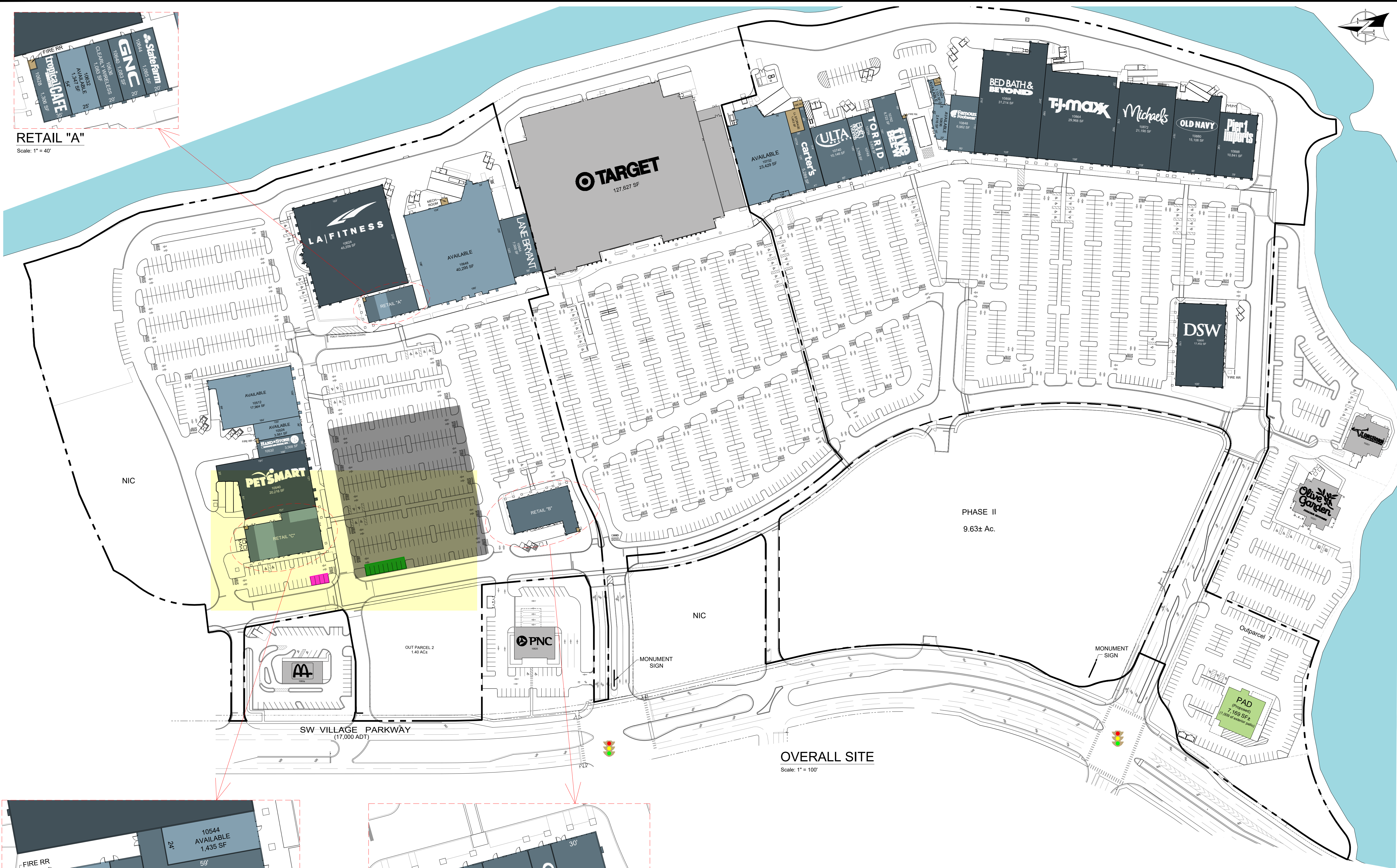
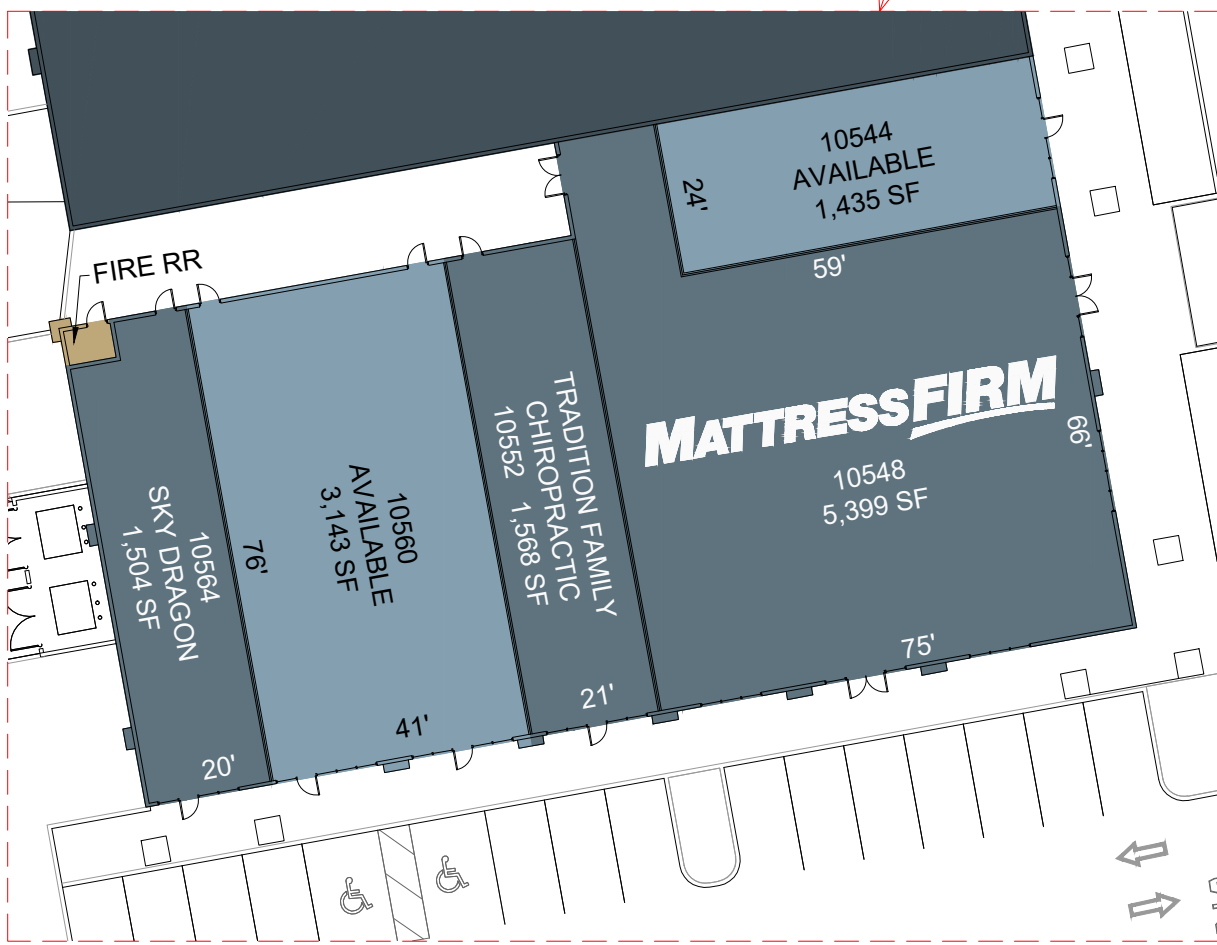


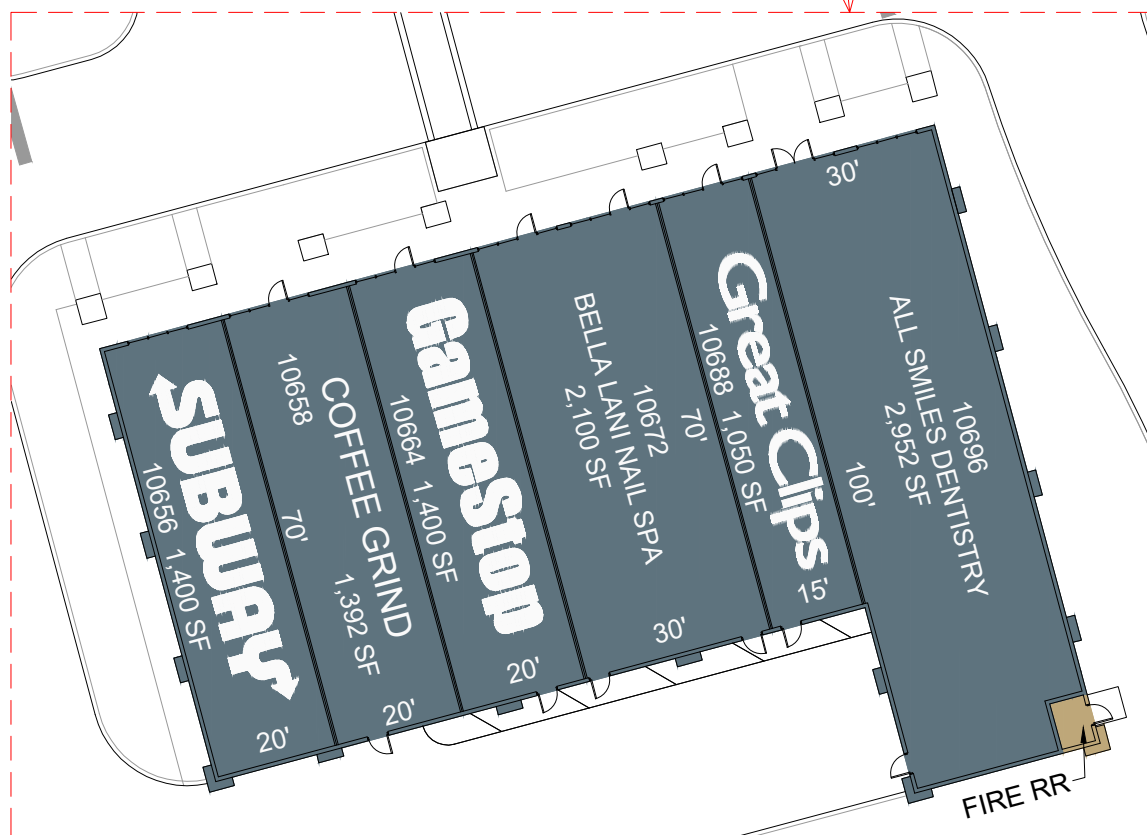
RETAIL "A"
Scale: 1" = 40'



OVERALL SITE
Scale: 1" = 100'



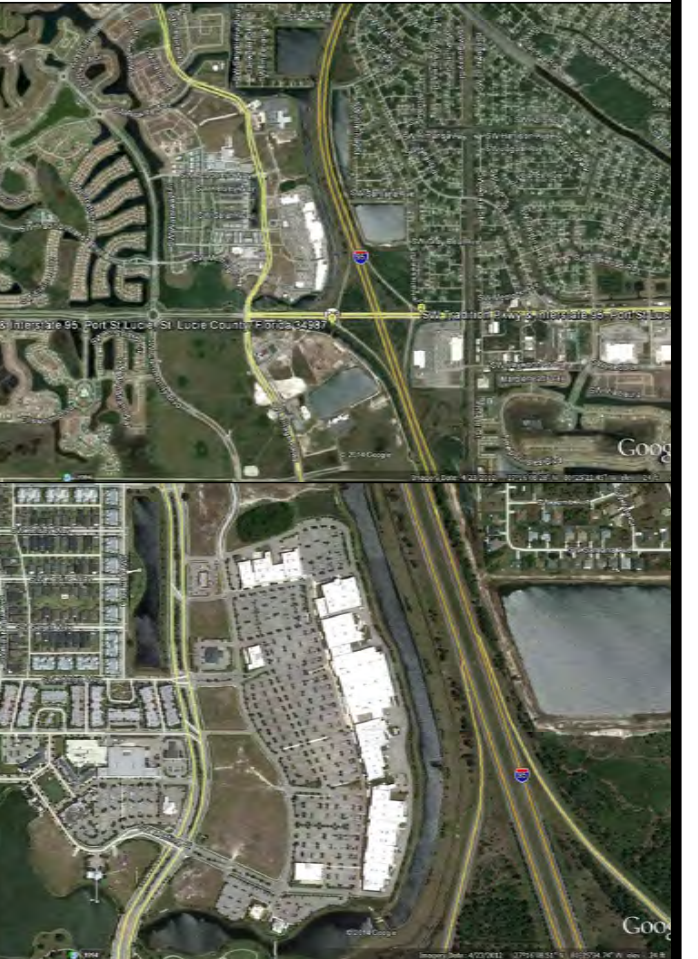
RETAIL "C"
Scale: 1" = 30'



RETAIL "B"
Scale: 1" = 30'



30 S. MERIDIAN STREET
SUITE 1100
INDIANAPOLIS, IN 46204
PHONE 317-577-5600
FAX 317-577-5605



SITE DATA

Target	127,627	SF
Target Prkg	654	
Prkg Ratio	5.12	/1000
Target Parcel	12.3	AC±
Petsmart	20,216	SF
Available	17,964	SF
LA Fitness	45,209	SF
Available	40,295	SF
Available	23,429	SF
Ulta	10,146	SF
Bed Bath & Beyond	31,214	SF
TJ Maxx	29,968	SF
Michales	21,190	SF
Old Navy	15,106	SF
Pier 1 Imports	10,841	SF
DSW	17,452	SF
Retail	76,010	SF
Total GLA	359,040	SF

Total Prkg	1,699	
Prkg Ratio	4.73	/1000
Shopping Center AC	78.97	AC±

OUTPARCEL 7

Pad (Proposed)	7,169	SF±
Parking	134	
Parking Ratio	18.7	/1000

THE LANDING AT TRADITION PORT ST. LUCIE, FLORIDA

Drawn By:	CHKD:
eem	
Date:	Scale:
04/01/2020	AS NOTED

CURRENT PLAN

Project No.	CP
5007	