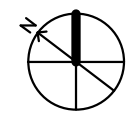


CONTRACT DOCUMENTS

12/1/21

NO.	REASON	DATE



PRINCIPAL IN CHARGE  
MARK TAUDIEN  
PROJECT MANAGER  
NOEL ALLEN  
DESIGN TEAM  
TONY GAZZIA

TURNER PORT ST. LUCIE  
CLINIC

11250 SW VILLAGE PKWY.  
PORT ST. LUCIE, FLORIDA  
34987

872-16572-00

ELECTRICAL LEGEND,  
ABBREVIATIONS, AND  
GENERAL NOTES

E001

SYMBOL LIST

MOUNTING HEIGHTS SHALL BE AS INDICATED  
UNLESS SHOWN OTHERWISE ON ELECTRICAL  
DRAWINGS OR ARCHITECTURAL ELEVATIONS

RACEWAYS AND WIRING

- NP26-1,3  
HOME RUN TO POWER PANEL. "NP26" INDICATES A PANEL, "1,3" INDICATES CIRCUIT NUMBERS. ALL CIRCUITS 20A-1P UNLESS NOTED OTHERWISE. NUMBER OF SLASH MARKS INDICATE NUMBER OF #12 AWG CONDUCTORS IN MINIMUM 3/4" DIAMETER CONDUIT. NO SLASH MARKS INDICATE 2#12 & 1#12G IN MINIMUM 3/4" DIAMETER CONDUIT UNLESS NOTED OTHERWISE.
- NOTES:  
1.) GREEN GROUND CONDUCTOR NOT INDICATED BUT SHALL BE INCLUDED IN EACH RACEWAY. SIZE SHALL BE #12 AWG UNLESS NOTED OTHERWISE.  
2.) HOME RUNS TO POWER PANELS SHALL HAVE A MAXIMUM OF THREE (3) PHASE CONDUCTORS PLUS THREE (3) NEUTRALS AND GROUND CONDUCTORS IN EACH CONDUIT.  
3.) ALL BRANCH CIRCUITS SHALL HAVE INDIVIDUAL NEUTRALS.
- FEEDER TAG, REFER TO LEGEND OF FEEDER SIZES.

LIGHTING FIXTURES

- F1  
2  
a  
LIGHTING FIXTURE CEILING OR RECESSED MOUNTED. "F1" INDICATES FIXTURE TYPE, "2" INDICATES CIRCUIT NUMBER, "a" INDICATES SWITCH CONTROL, "F1/E" INDICATES WIRED TO EMERGENCY POWER. "F1EM" AND "S" INDICATE EQUIPPED WITH BATTERY BACKUP.
- BARE LAMP STRIP OR INDUSTRIAL STRIP  
UNDERCOUNTER TASK LIGHT  
LED RECESSED OR SURFACE MOUNTED LIGHTING FIXTURE  
WALL MOUNTED LIGHTING FIXTURE  
WALL WASH OR DIRECTIONAL LIGHTING FIXTURE  
CEILING MOUNTED ILLUMINATED EXIT SIGN, ARROWS AS INDICATED ON DRAWINGS  
WALL MOUNTED ILLUMINATED EXIT SIGN  
SURGICAL EXAM LIGHT  
EMERGENCY BATTERY UNIT

LIGHTING DEVICES (MOUNTED 48" AFF UNLESS OTHERWISE INDICATED)

- S<sub>a</sub> SINGLE POLE TOGGLE SWITCH. "a" INDICATES FIXTURE CONTROL  
S<sub>3</sub> THREE WAY TOGGLE SWITCH  
S<sub>4</sub> FOUR WAY TOGGLE SWITCH  
D1 DIMMER SWITCH. "D1" INDICATES 1000 WATT DIMMER, "D2" INDICATES 2000 WATT DIMMER.  
F FAN SWITCH, FURNISHED BY HVAC SUBCONTRACTOR, INSTALLED AND WIRED BY ELECTRICAL SUBCONTRACTOR  
LVLC NURSE CALL LOW VOLTAGE LIGHTING CONTROL MODULE WITH ONE (1) 277V/20A RELAY AND 0-10V DIMMING CONTROL TERMINALS FOR CONTROL OF PATIENT BED AMBIENT READING LIGHT FIXTURES VIA PILLOW SPEAKER PUSHBUTTON(S). PROVIDE ADDITIONAL ISOLATION RELAY BETWEEN LOW VOLTAGE NURSE CALL AND 277V LIGHTING POWER WIRING. REFER TO LIGHTING FLOOR PLAN DRAWINGS.  
V WALL MOUNTED OCCUPANCY SENSOR LIGHTING CONTROL. WATTSTOPPER CAT # DSW-100, FIELD SET FOR MANUAL ON AND 20 MINUTE AUTOMATIC OFF. "V" INDICATES VACANCY SENSOR.  
V<sub>C</sub> OCCUPANCY SENSOR LIGHTING CONTROL, "C" INDICATES CEILING MOUNTED. WATTSTOPPER CAT# CI-355. FIELD SET FOR 20 MINUTE AUTOMATIC OFF.  
S<sub>MC</sub> THREE POSITION MOMENTARY CONTACT SWITCH, CENTER OFF  
B2P EMERGENCY LIGHTING BYPASS RELAY MODULE WITH FIRE ALARM OVERRIDE INPUT TYPE EPC-2-D OR APPROVED EQUAL. UL924 LISTED FOR EMERGENCY ILLUMINATION.

RECEPTACLES (MOUNTED 18" AFF)

- R21-2  
E DUPLEX RECEPTACLE. "R21" INDICATES PANEL, "2" INDICATES CIRCUIT NUMBER, "E" INDICATES WIRED TO EMERGENCY PANEL  
GFI DUPLEX RECEPTACLE MOUNTED 6" ABOVE COUNTER TOP  
GFCI DUPLEX RECEPTACLE WITH INTEGRAL GROUND FAULT INTERRUPTER MOUNTED 6" ABOVE COUNTER TOP  
DOUBLE DUPLEX RECEPTACLE  
GFI DUPLEX RECEPTACLE ONE HALF SWITCH CONTROLLED  
FLOOR DUPLEX RECEPTACLE FLOOR MOUNTED, SEE FLOOR MOUNTED DEVICES.  
SPECIAL PURPOSE RECEPTACLE, "2" INDICATES TYPE, SEE SPECIAL PURPOSE RECEPTACLE SCHEDULE  
GR  
GFI  
WP EXTERIOR, WEATHERPROOF. GFI RECEPTACLE WITH SECURE, KEYED, FLUSH MOUNTED COVER (FOR RECEPTACLES ACCESSIBLE FROM GRADE LEVEL). PROVIDE COVER SYSTEM BY PASS & SEYMOUR, CATALOG # 4690 & 4600-26P.

TELECOMMUNICATIONS (MOUNTED 18" AFF)

- TELEPHONE OUTLET  
TELEPHONE OUTLET MOUNTED 54" AFF  
TELEPHONE OUTLET FLOOR MOUNTED. SEE FLOOR MOUNTED DEVICES.  
CEILING MOUNTED TELEPHONE OUTLET  
COMPUTER SYSTEM OUTLET  
COMBINATION TELEPHONE/DATA OUTLET

ONE LINE POWER DIAGRAM

- LOAD-BREAK SWITCH  
FUSE, SIZE AS INDICATED  
TRANSFORMER, SIZE AS INDICATED  
CIRCUIT BREAKER  
DRAW-OUT CIRCUIT BREAKER  
KIRK-KEY INTERLOCK  
CURRENT TRANSFORMER  
POTENTIAL TRANSFORMER  
SOLID STATE TRIP UNIT  
GROUND  
AMMETER  
AMMETER SWITCH  
VOLTMETER  
VOLTMETER SWITCH  
PLUG-IN BUSWAY  
FEEDER BUSWAY  
CABLE TAP BOX  
PLUG-IN BUSWAY CIRCUIT BREAKER  
T2 DRY TYPE TRANSFORMER. "2" INDICATES SIZE, REFER TO DRY TYPE TRANSFORMER SCHEDULE  
KT2 "K" FACTOR DRY TYPE TRANSFORMER. "2" INDICATES SIZE, REFER TO "K" FACTOR DRY TYPE TRANSFORMER SCHEDULE

MISCELLANEOUS

- AD CONNECTION TO AUTOMATIC DOORS  
ATC CONNECTION TO AUTOMATIC TEMPERATURE CONTROLS  
PTS CONNECTION TO PNEUMATIC TUBE STATION  
ATB CONNECTION TO HVAC AIR TERMINAL BOX MOUNTED ABOVE CEILING  
MC CONNECTION TO MOTORIZED PROJECTION SCREEN MOUNTED ABOVE CEILING  
EWC CONNECTION TO ELECTRIC WATER COOLER  
CHB CONNECTION TO CHILLED BEAM CONTROLS AND ACCESSORIES.  
CAV CONNECTION TO CONSTANT AIR VOLUME BOX CONTROLS AND ACCESSORIES.  
AMB CONNECTION TO MOTORIZED AUTO-DAMPER CONTROLS AND ACCESSORIES.  
AVV CONNECTION TO AIR VALVE CONTROLS AND ACCESSORIES.  
SHD CONNECTION TO MOTORIZED SHADES AND SHADE CONTROL  
CP CONNECTION TO CONDENSATE PUMP  
TVH TWO GANG OUTLET BOX WITH TELEVISION ANTENNA OUTLET AND ADJACENT QUADRUPLX (DOUBLE DUPLEX) RECEPTACLE. RUN 1" C FROM OUTLET BOX TO ABOVE NEAREST ACCESSIBLE CORRIDOR CEILING  
MH TWO GANG OUTLET BOX WITH PATIENT MONITOR OUTLET AND ADJACENT DUPLEX RECEPTACLE. RUN 1" C FROM OUTLET BOX TO ABOVE NEAREST ACCESSIBLE CORRIDOR CEILING  
MH TWO GANG OUTLET BOX WITH AV OR SIGNAGE MONITOR OUTLET AND ADJACENT DUPLEX RECEPTACLE. RUN 1" C FROM OUTLET BOX TO ABOVE NEAREST ACCESSIBLE CORRIDOR CEILING  
PH PUSHBUTTON AND PLATE  
TC 7 DAY ASTRONOMICAL TIME CLOCK  
DH DOOR HOLDER

POWER DISTRIBUTION EQUIPMENT

- DISTRIBUTION PANEL  
PANELBOARD, SURFACE MOUNTED  
PANELBOARD, FLUSH MOUNTED  
JUNCTION BOX, SIZED PER NEC  
MOTOR, "2" INDICATES HORSEPOWER  
MAGNETIC MOTOR STARTER  
MANUAL MOTOR STARTER WITH THERMAL OVERLOAD. "P" INDICATES PILOT LIGHT  
NON-FUSED DISCONNECT SWITCH, SIZE AS REQUIRED. "6P" INDICATES 6 POLE  
FUSED DISCONNECT SWITCH, SIZE OF SWITCH AND FUSE AS REQUIRED  
COMBINATION MAGNETIC STARTER AND FUSED DISCONNECT SWITCH. SIZE OF STARTER, SWITCH AND FUSE AS REQUIRED  
T DRY-TYPE DISTRIBUTION TRANSFORMER.

FLOOR MOUNTED DEVICES

- 4 GANG ON-GRADE FLOOR BOX WITH QUADRUPLX RECEPTACLE AND TEL/DATA OUTLET. FLOOR BOX SHALL BE SUITABLE FOR SLAB-ON-GRADE INSTALLATION. PROVIDE WIREMOLD, CAT #EFB45S-OG, EFB45CTX and ALL REQUIRED DEVICE TRIMS. COORDINATE TRIM COLORS, FLOORING, AND FINISHES WITH ARCHITECT. PROVIDE ALL CONDUIT STUB-OUTS AS REQUIRED FOR TEL/DATA CONNECTIVITY. COORDINATE WITH LOW VOLTAGE CONTRACTORS.

DIGITAL LIGHTING CONTROL DEVICES

DEVICES MOUNTED ABOVE THE CEILING SUCH AS ROOM CONTROLLERS AND PLUG LOAD CONTROLLERS SHALL BE LOCATED ABOVE THE ENTRANCE TO THE ROOM IN A CONSISTENT ACCESSIBLE AREA FOR FUTURE MAINTENANCE. THE FINISH OF ALL DEVICES IN THE WALL AND ON THE CEILING SHALL BE COORDINATED WITH ARCHITECT. REFER TO SPECIFICATION 260920 FOR ADDITIONAL INFORMATION AND REQUIREMENTS.

- OC1<sub>a</sub> CEILING MOUNTED PASSIVE INFRARED OCCUPANCY SENSOR SHALL BE WATT STOPPER CAT NO. LMPC-100 FOR PRIVATE OFFICES, SMALL ENCLOSED SPACES, AND ROOMS. LOWER CASE LETTERS INDICATES ASSOCIATED CONTROL ZONE  
OC2<sub>a</sub> CEILING MOUNTED ULTRASONIC OCCUPANCY SENSOR SHALL BE WATT STOPPER CAT NO. LMUC-100 FOR OPEN OFFICE SPACE AND RESTROOM. LOWER CASE LETTERS INDICATE ASSOCIATED CONTROL ZONE  
OC3<sub>a</sub> CEILING MOUNTED DUAL TECHNOLOGY OCCUPANCY SENSOR SHALL BE WATT STOPPER CAT NO. LMDC-100 FOR OPEN LAB SPACES. LOWER CASE LETTERS INDICATE ASSOCIATED CONTROL ZONE  
OC4<sub>a</sub> CEILING MOUNTED PASSIVE INFRARED OCCUPANCY SENSOR WITH EXTENDED HEIGHT LENS SHALL BE WATT STOPPER CAT NO. LMPC-100-S FOR DOUBLE HEIGHT CEILING SPACES. LOWER CASE LETTERS INDICATES ASSOCIATED CONTROL ZONE  
DSW<sub>a,b</sub> DIGITAL WALL SWITCH SHALL BE WATT STOPPER LMSW SERIES LOWER CASE LETTERS INDICATES ASSOCIATED LIGHT ZONE CONTROL. NUMERICAL IDENTIFIER INDICATES HOW MANY BUTTONS. "S1" INDICATES 1 BUTTON, "S2" INDICATES 2 BUTTONS, ETC  
D<sub>a</sub> RADIANT 0-10V SWITCH AND DIMMER WALL CONTROL. LOWER CASE LETTERS INDICATES ASSOCIATED LIGHT ZONE CONTROL. SHALL BE RH4FBL3P.  
D<sub>a</sub> LOW VOLTAGE DIGITAL DIMMING WALL SWITCH FOR DIMMING CONTROL OF ONE OR MORE LIGHTING LOADS. 1 PADDLE WITH IR. LOWER CASE LETTERS INDICATES ASSOCIATED LIGHT ZONE CONTROL. SHALL BE WATTSTOPPER LMDM-101.  
DSW WALL MOUNTED DUAL TECHNOLOGY OCCUPANCY SENSOR. SHALL BE WATT STOPPER DSW-301.  
PT<sub>a</sub> DIGITAL PARTITION SWITCH STATION WITH OPEN AND CLOSED BUTTONS FOR ROOMS WITH MOVABLE PARTITIONS.  
Z1-Zx LIGHTING CONTROL PUSH BUTTON STATION TO OVERRIDE OPEN OFFICE AND CORRIDOR LIGHTING ZONES. DIGITAL WALL SWITCH SHALL BE WATT STOPPER LSG3-WH-1. Z1-Zx INDICATES OPEN OFFICE AREA ZONES TO CONTROL  
Z1-Zx LIGHTING CONTROL PUSH BUTTON STATION WITH BLUETOOTH TO OVERRIDE OPEN OFFICE AND CORRIDOR LIGHTING ZONES. DIGITAL WALL SWITCH SHALL BE WATT STOPPER LSG3-WH-1-BT. Z1-Zx INDICATES OPEN OFFICE AREA ZONES TO CONTROL  
NB NETWORK BRIDGE TO INTEGRATE SYSTEM AS A NETWORK. WATTSTOPPER CAT. NO. LMBC-300  
RC1<sub>D</sub><sup>BP</sup> ROOM CONTROLLER FOR SINGLE ZONE SHALL BE WATTSTOPPER LMRC-101 WITH FIELD SELECTABLE 0-10V DIMMING CAPABILITY PER ZONE WHERE INDICATED BY A SUFFIX "D" (WATTSTOPPER LMRC-111). "BP" DENOTES BYPASS RELAY USED ON EMERGENCY LIGHT.  
RC2<sub>D</sub><sup>BP</sup> ROOM CONTROLLER FOR TWO ZONES SHALL BE WATTSTOPPER LMRC-102 WITH FIELD SELECTABLE 0-10V DIMMING CAPABILITY PER ZONE WHERE INDICATED BY A SUFFIX "D" (WATTSTOPPER LMRC-112). "BP" DENOTES BYPASS RELAY USED ON EMERGENCY LIGHT.  
RC3<sub>D</sub><sup>BP</sup> ROOM CONTROLLER FOR THREE ZONES SHALL BE WATTSTOPPER LMRC-213 WITH FIELD SELECTABLE 0-10V DIMMING CAPABILITY PER ZONE WHERE INDICATED BY A SUFFIX "D". "BP" DENOTES BYPASS RELAY USED ON EMERGENCY LIGHT.  
RCM<sub>D</sub><sup>BP</sup> ROOM CONTROLLER FOR SINGLE ZONE WITH METERING SHALL BE WATTSTOPPER LMRC-211 WITH FIELD SELECTABLE 0-10V DIMMING CAPABILITY PER ZONE WHERE INDICATED BY A SUFFIX "D" (WATTSTOPPER LMRC-211). INTEGRAL POWER METERING SHALL BE CONNECTED TO BMS SYSTEM. "BP" DENOTES BYPASS RELAY USED ON EMERGENCY LIGHT.  
RCD UNIVERSAL DIMMING ROOM CONTROLLER FOR ONE ZONE SHALL BE WATTSTOPPER LMRC-221 FOR FLUORESCENT DIMMING TO 1%  
PC PHOTOCELL SENSOR, FOR DAYLIGHT DIMMING CONTROL - CLOSED LOOP DETECTION. WATTSTOPPER CAT. NO. LMLS-400.  
PCD PHOTOCELL SENSOR, FOR DAYLIGHT DIMMING CONTROL - OPEN LOOP DETECTION. WATTSTOPPER CAT. NO. LMLS-500.  
PTS PHOTOELECTRIC PARTITION SENSOR.  
IR LOW VOLTAGE INPUT INTERFACE. WATTSTOPPER LMN-104.  
PR POWER SUPPLY REPEATER - REMOTE MOUNT. LIGHTSYNC LSPSR-R.

BRANCH CIRCUIT WIRING NOTES:

- WIRING IS SHOWN ON DRAWINGS ONLY FOR SPECIFIC ROUTES OR SPECIAL CONDITIONS
- WIRING AND CONDUIT SHALL BE REQUIRED BETWEEN ALL OUTLETS INDICATED WITH CIRCUIT NUMBERS AND PANEL DESIGNATIONS
- ALL SWITCH CONTROLS SHALL BE PROVIDED WITH WIRING AND CONDUIT AS REQUIRED
- ALTHOUGH ALL BRANCH CIRCUIT WIRING AND CONDUIT IS NOT SHOWN, IT IS THE INTENT OF THESE DOCUMENTS THAT A COMPLETE BRANCH CIRCUIT WIRING SYSTEM BE INSTALLED
- A GREEN GROUNDING CONDUCTOR SHALL BE RUN WITH ALL CIRCUITS. VERIFY CONDUIT SIZE TO ENSURE IT CAN ACCOMMODATE ALL PHASE, NEUTRAL AND GROUND CONDUCTORS.

CODES AND REGULATIONS

INSTALLATION SHALL CONFORM TO THE FOLLOWING CODES AND REGULATIONS:

FGI (AIA GUIDELINES) - 2018  
NFPA-70: NATIONAL ELECTRIC CODE - 2017  
NFPA 101: LIFE SAFETY CODE - 2018  
FLORIDA AMERICANS WITH DISABILITIES ACCESSIBILITY IMPLEMENTATION ACT - 2012  
STATE OF FLORIDA FIRE PREVENTION CODE - 2020, 7th EDITION  
NFPA 90A: STANDARD FOR INSTALLATION OF A/C AND VENTILATING SYSTEMS - 2015  
NFPA-72: NATIONAL FIRE ALARM CODE - 2016  
FLORIDA BUILDING CODE - 2020, 7th EDITION  
NFPA-780: 2017 EDITION  
APPLICABLE LOCAL CODES  
NFPA-99: STANDARD FOR HEALTH CARE FACILITIES - 2018  
NFPA-110: STANDARD FOR EMERGENCY & STANDBY POWER SYSTEMS - 2016

ABBREVIATIONS

- A AMPERES  
AF AMPERE FRAME (CIRCUIT BREAKER RATING)  
AFF ABOVE FINISHED FLOOR  
AFG ABOVE FINISHED GRADE  
AIC AMPERE INTERRUPTING CAPACITY  
AL ALUMINUM  
ARCH ARCHITECT  
AT AMPERE TRIP (CIRCUIT BREAKER RATING)  
ATS AUTOMATIC TRANSFER SWITCH  
AWG AMERICAN WIRE GUAGE  
BLDG BUILDING  
C CONDUIT  
C.B. CIRCUIT BREAKER  
C.T. CURRENT TRANSFORMER  
CAT CATALOG  
CIR CIRCUIT  
COL COLUMN  
CU COPPER  
Δ DELTA  
DWG DRAWING  
E WIRED ON EMERGENCY CIRCUIT  
EC EMPTY CONDUIT  
EM EMERGENCY  
ENL EXISTING IN NEW LOCATION  
ETD EXISTING TO BE DEMOLISHED AND REMOVED  
ETR EXISTING TO REMAIN  
ETRL EXISTING TO BE REMOVED AND REUSED/RELOCATED  
F FLUSH  
FT FEET  
G GROUND  
KMIL ONE THOUSAND CIRCULAR MILS  
KVA KILOVOLT-AMPERES  
KVAR KILOVOLT-AMPERES REACTIVE  
KW KILOWATTS  
MCB MAIN CIRCUIT BREAKER  
MCC MOTOR CONTROL CENTER  
MISC MISCELLANEOUS  
MLO MAIN LUGS ONLY  
NC NORMALLY CLOSED  
NEC NATIONAL ELECTRICAL CODE  
NL NIGHT LIGHT  
NO NORMALLY OPEN  
NTS NOT TO SCALE  
∅ PHASE  
P POLE  
P.T. POTENTIAL TRANSFORMER  
PVC POLYVINYL CHLORIDE  
R RECESSED  
S SURFACE  
SCR SHORT CIRCUIT INTERRUPTING RATING  
SP SPARE  
SW SWITCH  
TEL TELEPHONE  
U UPS RECEPTACLE  
UG UNDERGROUND  
V VOLT  
Y WYE  
W WATT  
WP WEATHERPROOF  
XFMR TRANSFORMER

ELECTRICAL SHEET INDEX	
Sheet Number	Sheet Name
E001	ELECTRICAL LEGEND, ABBREVIATIONS, AND GENERAL NOTES
E201	NEW LIGHTING PLAN - LEVEL 01
E301	NEW POWER PLAN - LEVEL 01
E601	ELECTRICAL RISER DIAGRAMS
E701	ELECTRICAL SCHEDULES
E702	ELECTRICAL DETAILS
E801	ELECTRICAL PANEL SCHEDULES