

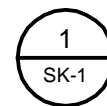
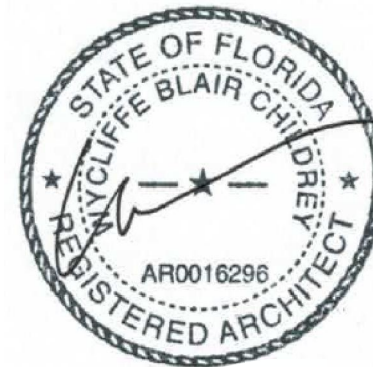
DESIGN CRITERIA:  
2017 FLORIDA BUILDING CODE, 6TH EDITION

WIND LOADS:  
Vult = 139 MPH  
EXPOSURE CLASS = B

POLE MAY SUPPORT A MAXIMUM OF (2) LED LIGHT FIXTURES WITH PROJECTED WIND ARE NOT GREATER THAN 1.7 SQ FT AND WEIGHT NOT TO EXCEED 30 LBS EACH.

ALL REBAR TO BE ASTM A615, GRADE 60

ALLOWABLE SOIL BEARING PRESSURE = 2,000 PSF (VERTICAL)  
ALLOWABLE SOIL BEARING PRESSURE = 150 PSF / FT. LATERAL



POLE BASE DETAIL

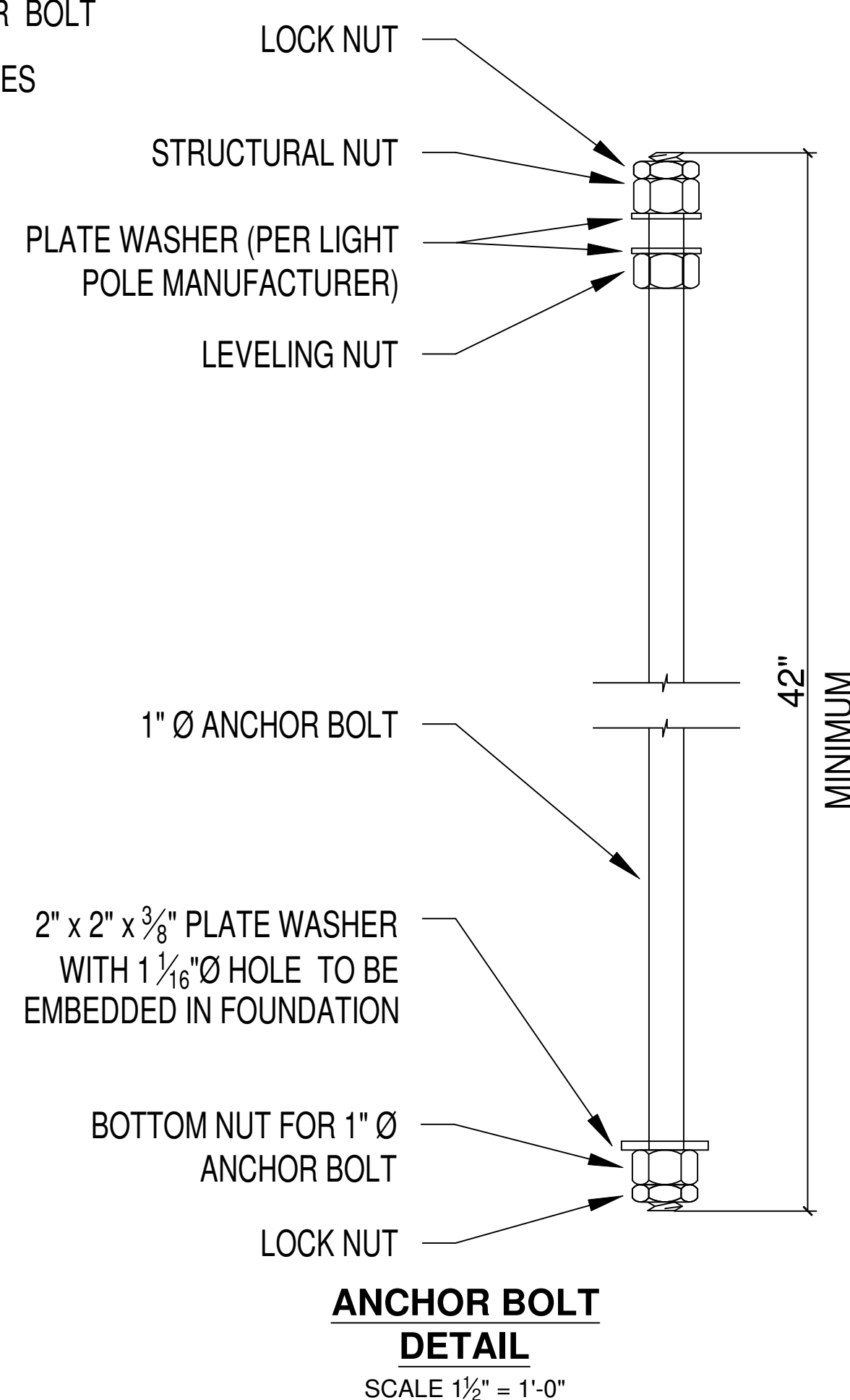
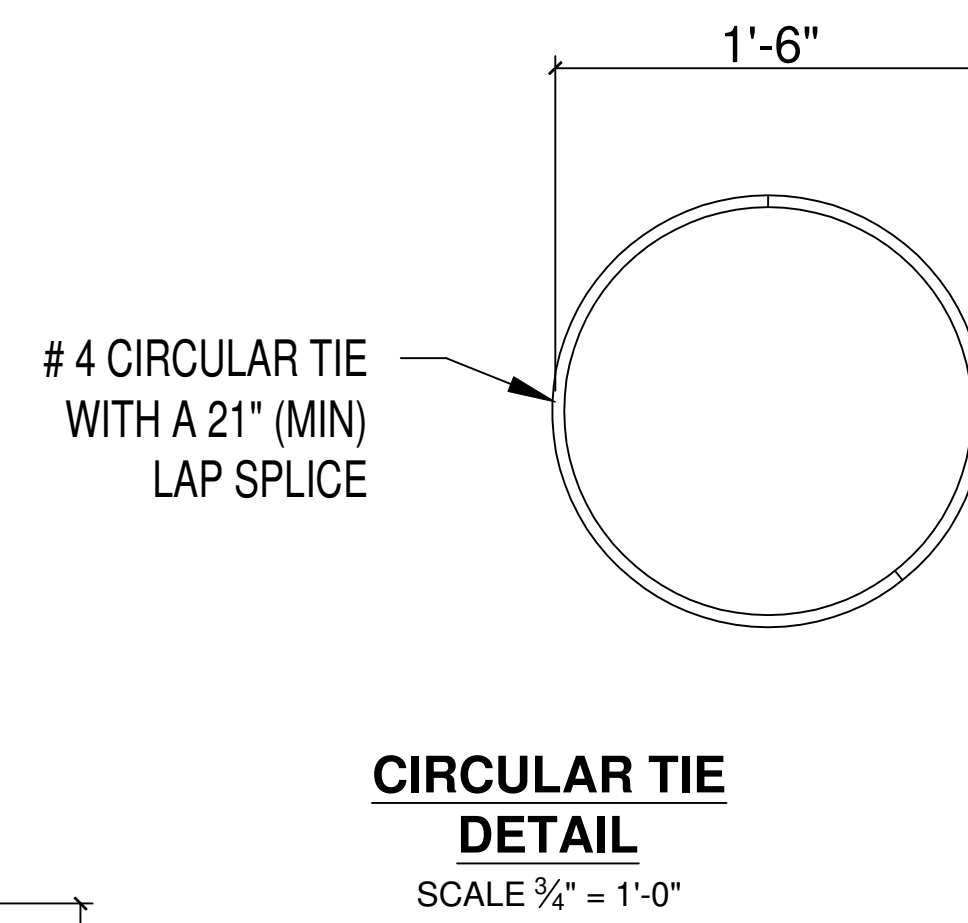
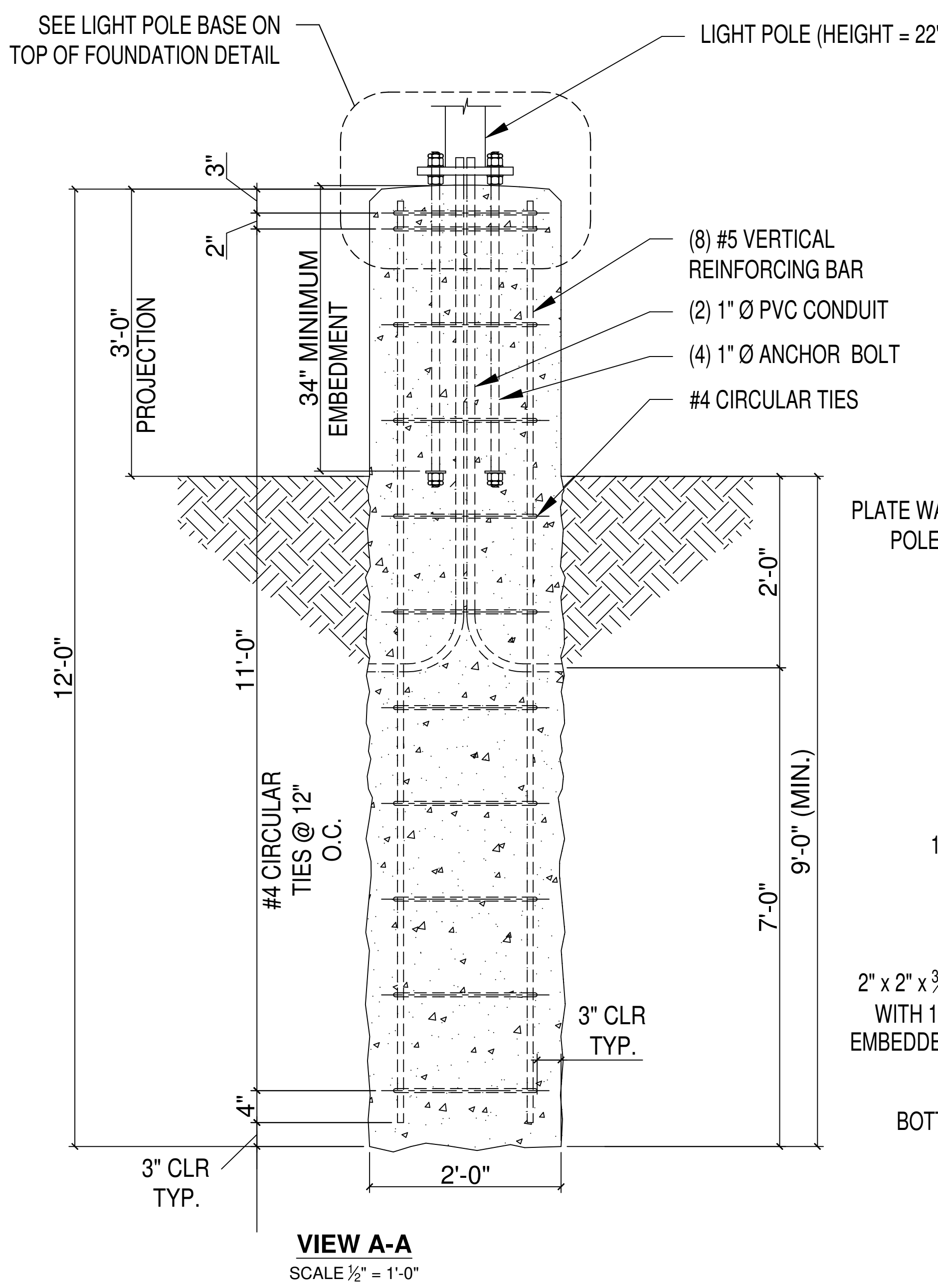
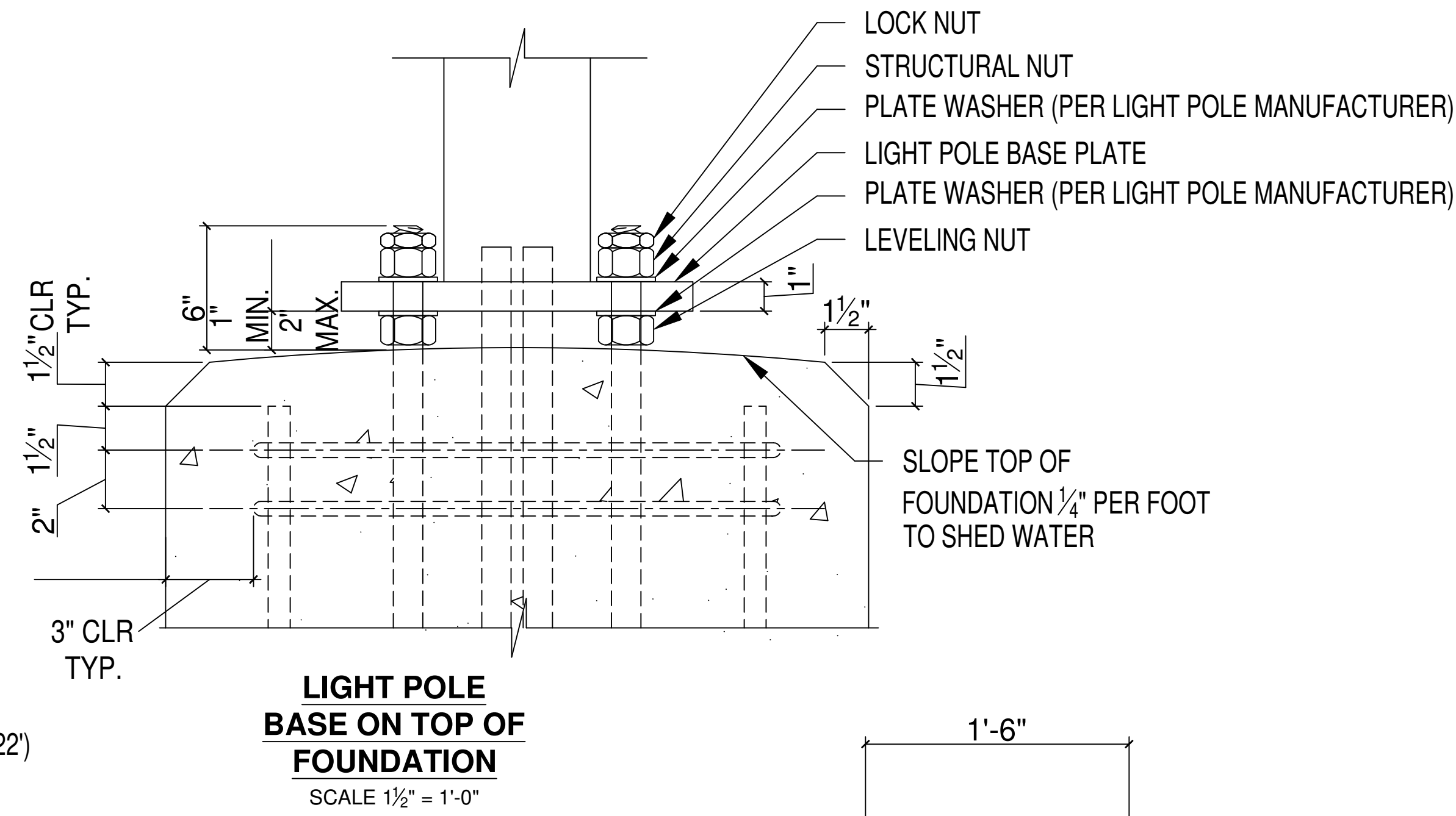
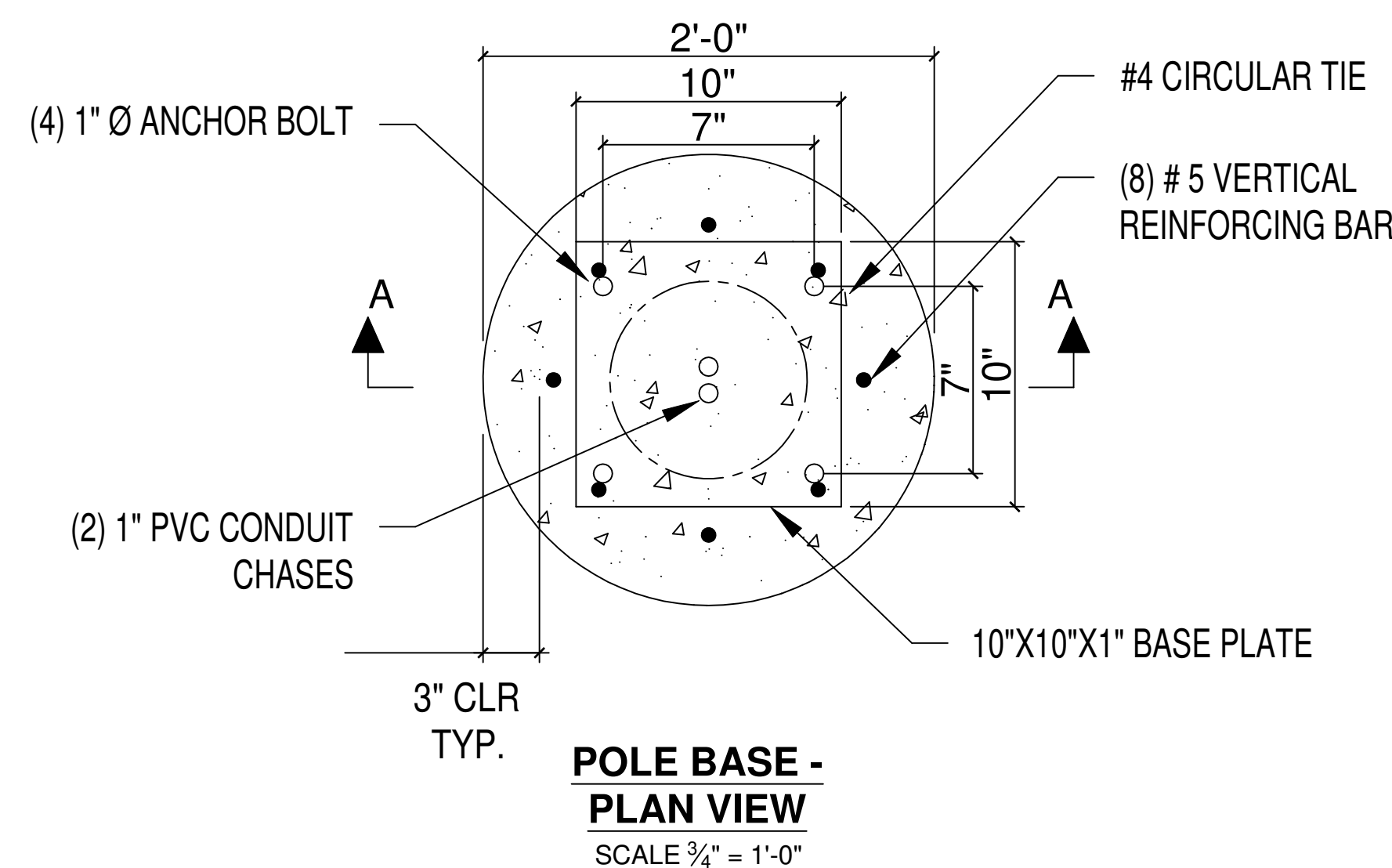
3/16"=1'-0"

TAKE 5 OIL CHANGE  
3095 SW PORT ST LUCIE BLVD  
PORT ST LUCIE, FL 34953  
CSC PROPERTIES, LLC  
CLEARWATER, FL

POLE BASE DETAIL

10/26/21

SK-1



GENERAL NOTES

- DESIGN CRITERIA:
- FOUNDATION DESIGN PARAMETERS:
- 2020 FLORIDA BUILDING CODE, SEVENTH EDITION
  - ULTIMATE WIND SPEED - VULT = 150 MPH, RISK CATEGORY II EXPOSURE C
  - MINIMUM REQUIRED SOIL PARAMETERS:
    - COHESIVE SOILS:
      - SHEAR STRENGTH = 750 lbs/ft²
      - 6" MAXIMUM DEPTH OF DISTURBED SOIL OR TOP SOIL
    - COHESIONLESS SOILS:
      - ANGLE OF INTERNAL FRICTION = 27 DEGREES
      - WATER TABLE SHALL BE LOCATED BELOW THE BOTTOM OF THE FOUNDATION
      - 6" MAXIMUM DEPTH OF DISTURBED SOIL OR TOP SOIL
  - THIS FOUNDATION DESIGN SHALL NOT BE USED IN LOCATIONS WHICH ARE CLOSER THAN 8ft FROM A RETAINING WALL.
  - THIS FOUNDATION DESIGN SHALL NOT BE USED AT LOCATIONS WHERE THE GROUND SLOPE EXCEEDS 4 inches per foot.

- GENERAL NOTES:
- CONCRETE COMPRESSIVE STRENGTH (f'c) SHALL BE A MINIMUM OF 3000psi
  - ANCHOR BOLTS SHALL BE ASTM F1554 GRADE 55, HOT DIP GALVANIZED PER ASTM F2329
  - REINFORCING STEEL SHALL BE ASTM A615 GRADE 60
  - NUTS SHALL BE HEAVY HEX ASTM A563 GRADE DH, HOT DIP GALVANIZED PER ASTM A153
  - PLATE SHALL BE ASTM A572 GRADE 50, HOT DIP GALVANIZED PER ASTM A153
  - LOCK NUT SHALL BE HOT DIP GALVANIZED PER ASTM A153

LIGHT POLE FOUNDATION



*Donald C. Hoffmann*

ISSUES AND REVISIONS	
NO	DATE
0	10-29-2021

TAKE 5 OIL CHANGE – 3095 SW PORT ST LUCIE BOULEVARD  
PORT ST LUCIE, FLORIDA

SHEET

LP-1

PROJ. NO. : 21-1458-0016