

D

C

B

A

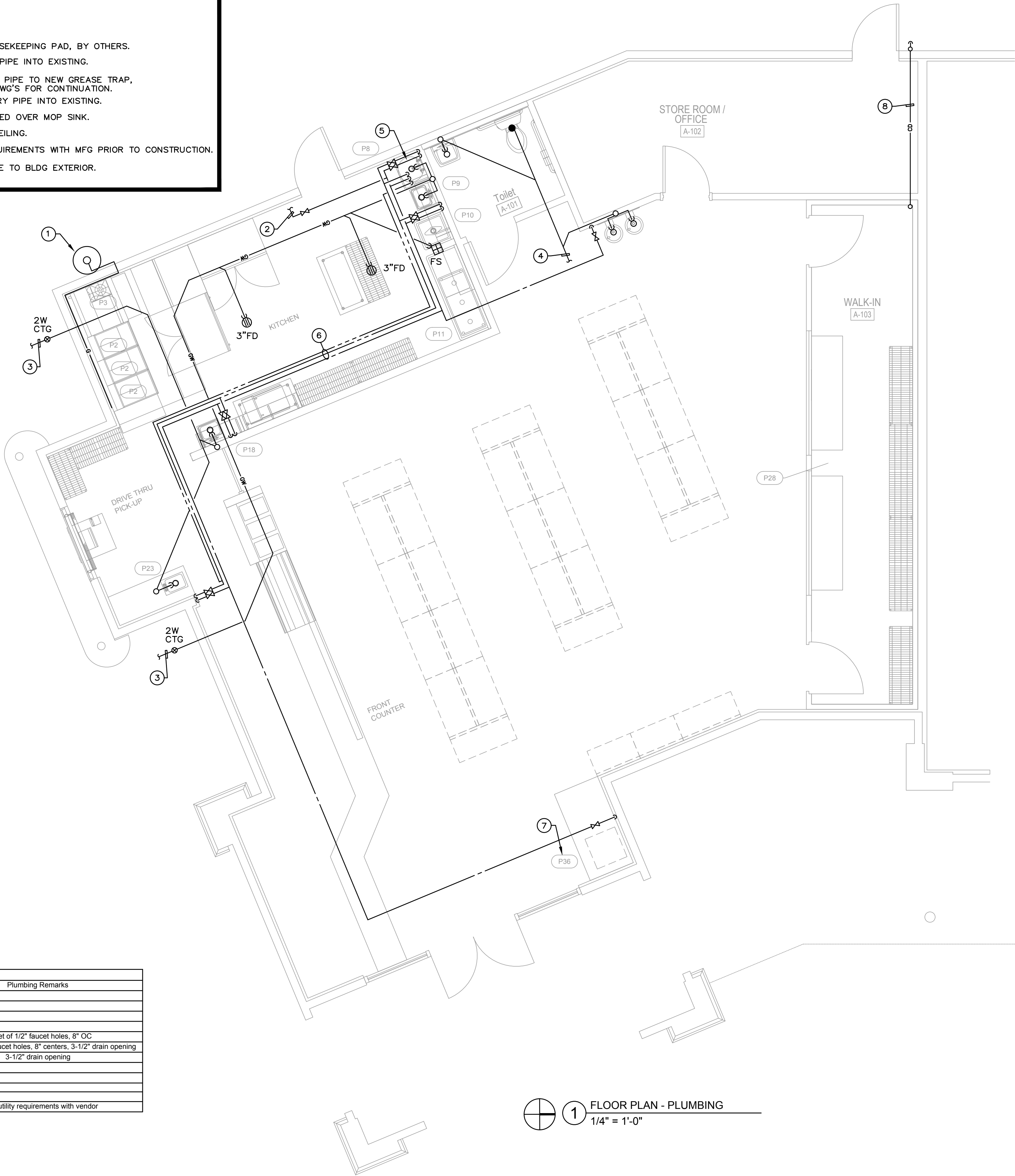
GENERAL PLUMBING NOTES

1. E.C. SHALL REFER TO KITCHEN PLUMBING ROUGH-IN DRAWINGS FOR ALL KITCHEN EQUIPMENT PLUMBING REQUIREMENTS.

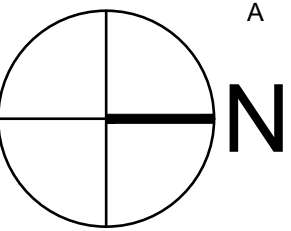
PLUMBING SCHEDULE									
ItemNo	Quantity	Category	Cold Water (in)	Hot Water (in)	Filtered Water Size	Indirect Waste Size	Direct Waste Size	Gas Size(in)	Plumbing Remarks
2	3	Gas Floor Fryer						3/4"	150 MBTU
3	1	Range, 48", 2 Open Burners, 36" Griddle						3/4"	147 MBTU
8	1	Mop Sink	1/2"	1/2"			3"		
9	1	Hand Sink	1/2"	1/2"		1-1/2			
10	1	One (1) Compartment Sink				1-1/2			(1) set of 1/2" faucet holes, 8" OC
11	1	Three (3) Compartment Sink							(1) set of 1-1/8" faucet holes, 8" centers, 3-1/2" drain opening
18	1	Hand Sink	1/2"	1/2"		1-1/2			3-1/2" drain opening
1	1								
23	1	Hand Sink	1/2"	1/2"			2"		
28	1	Walk In Cooler, Modular, Remote				1"			
36	1	Espresso Cappuccino Machine							Verify utility requirements with vendor

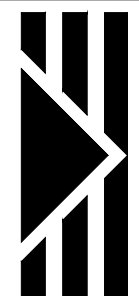
KEYNOTES:

- ① LP GAS TANK ON HOUSEKEEPING PAD, BY OTHERS.  
② CONNECT NEW WATER PIPE INTO EXISTING.  
③ CONNECT NEW GREASE PIPE TO NEW GREASE TRAP, REFER TO CIVIL ENG DWG'S FOR CONTINUATION.  
④ CONNECT NEW SANITARY PIPE INTO EXISTING.  
⑤ WATER HEATER MOUNTED OVER MOP SINK.  
⑥ PIPING RUNS ABOVE CEILING.  
⑦ VERIFY PLUMBING REQUIREMENTS WITH MFG PRIOR TO CONSTRUCTION.  
⑧ 3/4" CONDENSATE LINE TO BLDG EXTERIOR.



① FLOOR PLAN - PLUMBING  
1/4" = 1'-0"





**STOFFER & ASSOCIATES, INC.**  
CONSULTING ENGINEERS  
CA #26069

10381 Hart Branch Circle  
Randall D. Stoffer, P.E.  
Phone (407) 381-4555

Orlando, Florida 32832  
PE #37367  
Cell (407) 496-5894

**ELECTRICAL - HVAC - PLUMBING**

TORINO PLAZA  
Tenant Improvement South Building - Unit A-B  
NW East Torino Parkway - Port St. Lucie, FL  
Construction Documents

Comm. No: 20045.00  
Date: 10/06/21

Drawn: RDS

Revisions		
No.	Date	Note

TO THE BEST OF MY KNOWLEDGE, THE PLANS AND SPECIFICATIONS COMPLY WITH THE MINIMUM BUILDING CODES.

Rene Tercilla, AIA, ALEP  
L.I.C. # AR0013566  
©2020 HARVARD JOLLY, INC.

Tenant Improvement  
South Building  
Unit A-B