

LUMINAIRE LEGEND		
SYMBOL	DESCRIPTION	MODEL
	2X4 FLUOR. LAY IN LUMINAIRE	LITHONA
	2X2 FLUOR. LAY IN LUMINAIRE	LITHONA
	NEW CLG MOUNT CAN LUMINARES	SUNCO SUN
	SUSPENDEd LUMINAIRE	BY OWNER
	PENDANT TYPE LUMINAIRE	BY OWNER
	EXIT SIGN/ EMER. LT. COMBO	LITHONA
	EMERGENCY LIGHTS-WALL	LITHONA
	WALL MOUNT INCAND.	HYPERIKON
	SWITCHED OCCUPANT SENSOR	TOPGREENER
	HI HAT OR 2" SPOT LIGHT	
	ILLUMINATED EXIST SIGN	ETOP
	LUMINAIRE TOGGLE OR ROCKER	
	SUSPENDED TRACK LIGHTING	BY OWNER
	SCONCE OR RESTROOM MIRROR LT	BY OWNER

POWER SYMBOL LEGEND	
SYMBOL	DESCRIPTION
	HOMERUN CONDUIT-POWER/ 120V LIGHTING
	HOMERUN CONDUIT-EQUIPMENT PHASE(S) / NEUTRAL
	FLEXIBLE CONDUIT (OR NEW WORK)
	CEILING JUNCTION BOX
	WALL JUNCTION BOX
	DUPLEX OUTLET-18" A.F.F.
	DUPLEX NEMA L14 / L21 (240/ 208V)
	CHILD PROOF DUPLEX- 18" A.F.F.
	SINGLE HALF SWITCHED 42"-46" A.F.F.
	QUAD OUTLET 18" A.F.F.
	GROUND FAULT CIRCUIT INTERRUPTER
	DUPLEX OUTLET-42"-46" A.F.F.
	AUTO RECEPT. DUPLEX OUTLET SEE TYP. AUTO RECEPT. DIAGRAM
	DOUBLE DUPLEX OUTLET 42"-46" A.F.F.
	208/ 220/ 240 v OUTLET- DIRECT
	FLOOR OUTLET
	PHOTOCELL LAMP
	SW (CONTACT SWITCH)
	BREAKER CONTACT POLES/ MIN. SIZE
	CEILING OUTLET
	UPDATED NEW POWER PANELBOARD
	POWER PANELBOARD-EXISTING
	NETWORK DATA OUTLET
	TELEPHONIC LINE
	DATA COM- NETWORK HUB - CONTROL PANEL
	DATA COM- NETWORK HUB - CONTROL PANEL EXISTING

ELECTRICAL NOTES

- A. GENERAL PROVISIONS:
1. PROVIDE ALL LABOR, MATERIALS AND EQUIPMENT FOR A COMPLETE AND PROPERLY OPERATING ELECTRICAL SYSTEM.

2. CODES AND STANDARDS: CONFORM TO THE REQUIREMENTS OF THE 2020 FLORIDA BUILDING CODE, BUILDING 7TH ED AND THE NEC 2017, NFPA 70

3. NOTIFY THE ENGINEER OF OMISSIONS AND CHANGES
- B. MATERIALS:
1. CONDUIT SHALL BE CONCEALED ELECTRICAL METALLIC/ALUM. TUBING. ALL EXTERIOR BELOW GRADE SHALL BE SCHED 40 PVC. 4" DIA. OR SCHED 40 RGS. WITH A CONDUIT PERCENTAGE FILL OF 47% MAX.

2. OUTLET BOXES: 4" X 4" STEEL W/PLASTER RINGS SIZED IN ACCORDANCE WITH NEC FOR CONCEALED INTERIOR

3. WIRE: COPPER THHN/THWN DUAL RATED

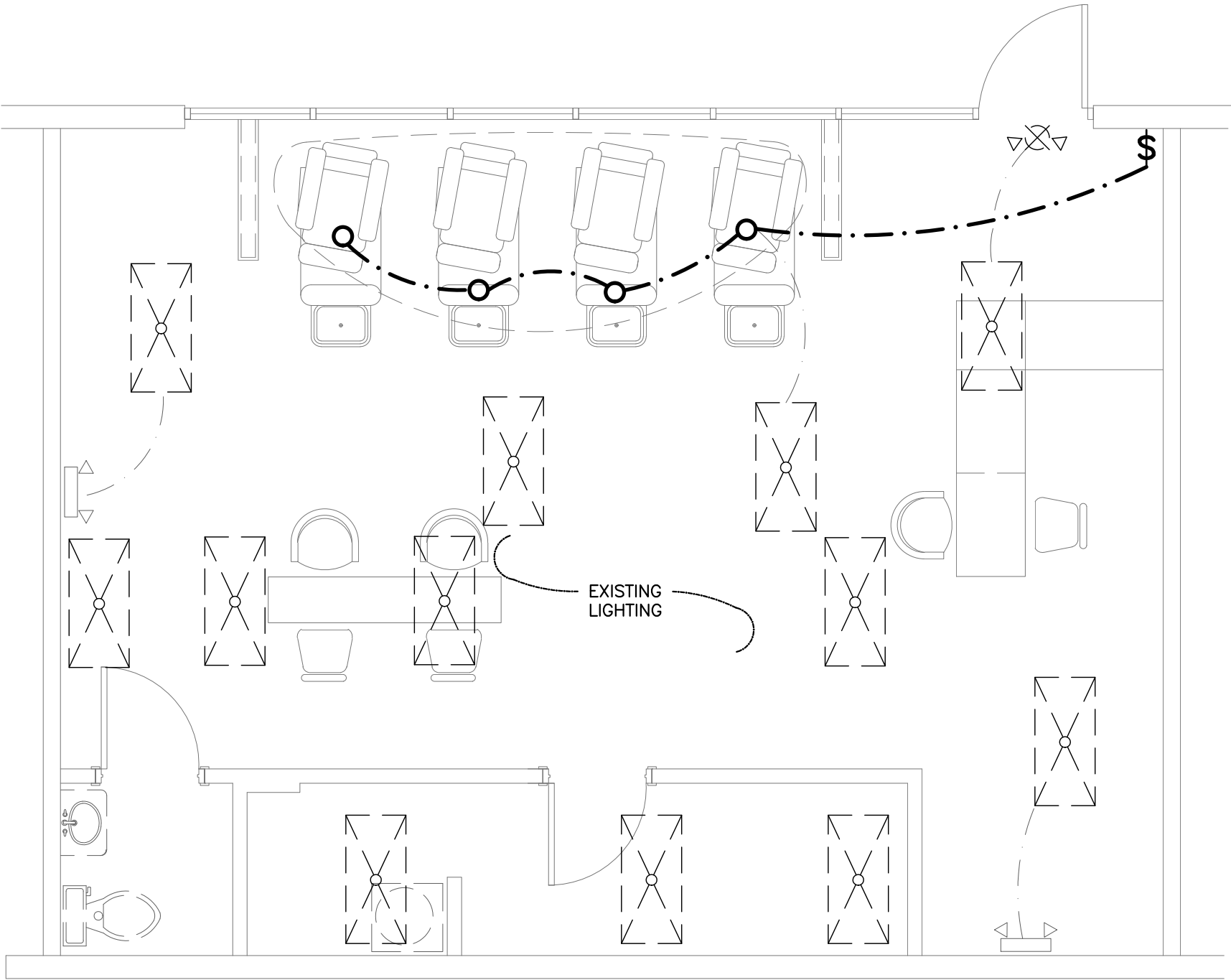
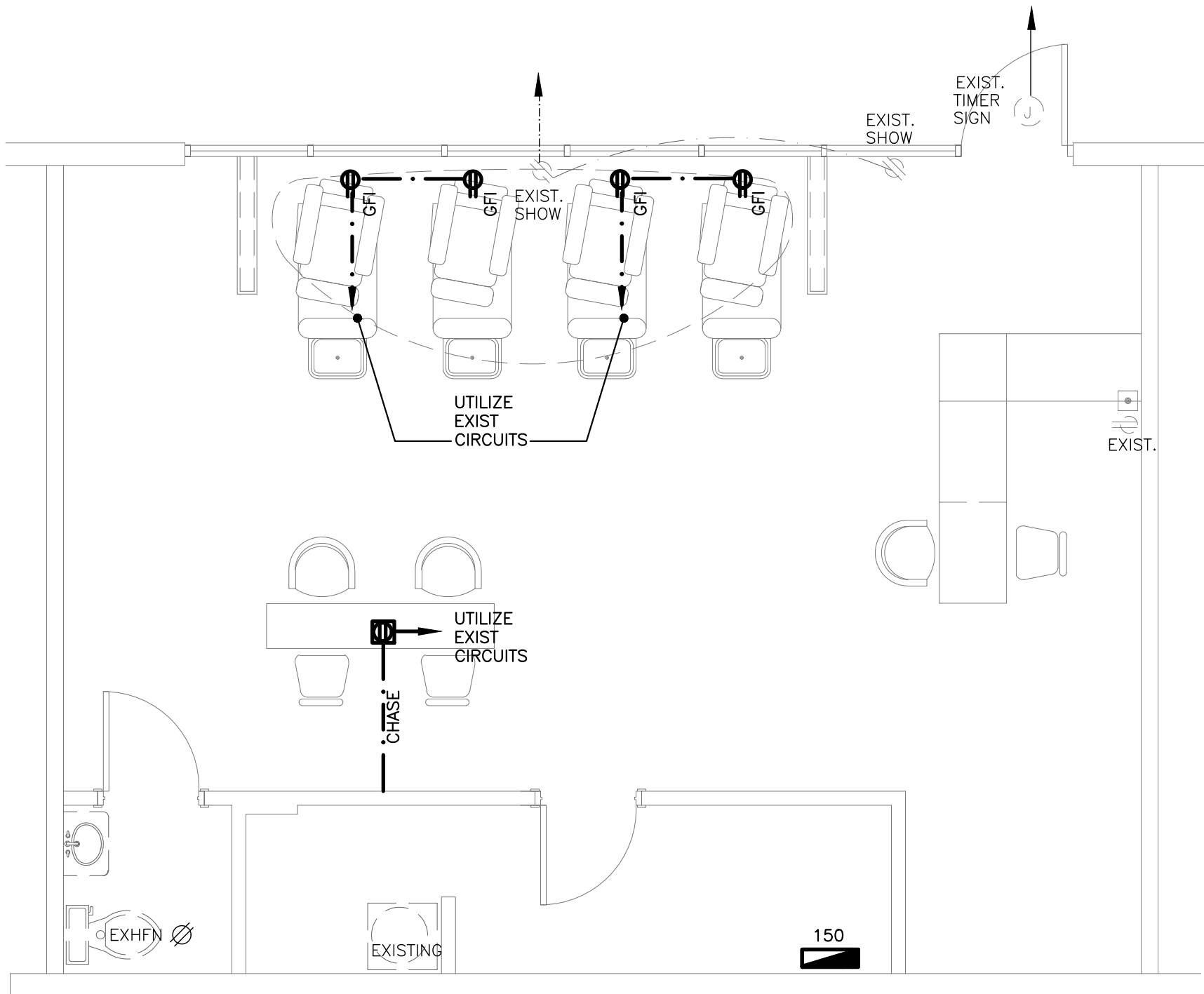
4. WIRING DEVICES: MATCH PLATES AND DEVICES WITH WALL COLOR OR PER CONTRACT
- A. RECEPTACLES= 20AMPS, 120V 2 POLE 3 WIRE, GROUNDING TYPE OR ISOLATED GROUNDING TYPE PER PLAN.

B. SWITCHES= MIN 34" A.F.F. MAX 48" 20 AMPS/277V
5. NO MORE THAN 9 CURRENT CARRYING CONDUCTORS PER CONDUIT.
6. ELECTRICAL OUTLET OR BOXES SHALL NOT REDUCE THE FIRE RESISTANCE RATING OF THE FIRE RESISTANT RATED WALL AND SHALL COMPLY WITH FBCB (7TH ED) 714.3.2
- 7.CONDUCTORS MUST BE DERATED PER NEC TABLE 310.15(B)(3)(A), EXPOSED, CONCEALED, OR FISHED, IN CABLE TRAYS AND ENVIRONMENTAL AIR-HANDLING SPACES.GALVANIZED STEEL ARMOR.
8. COMMON GROUNDS MUST BE SIZED TO THE LARGEST CONDUCTOR.

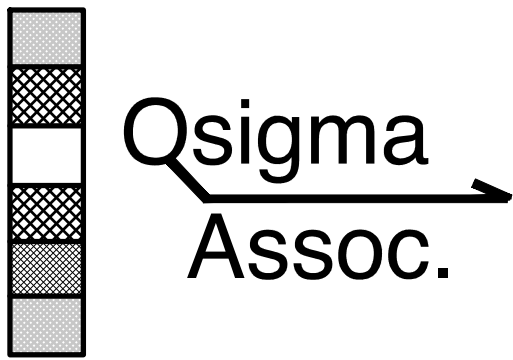
- C. LIGHTING:
1. ALL LIGHTING FIXTURES SPECIFIED BY OWNER WITH ALL NECESSARY HARDWARE

2. ALL EMERGENCY AND EXIT LIGHTS MUST TIE INTO THE LOCAL ILLUMINATION CIRCUIT THEY SERVE.

3. ILLUMINATION OF MEANS OF EGRESS CAN NOT BE INTERRUPTED BY ACCEDENTLY OPENING OF A SWITCH CONTROLLING NORMAL LIGHTING.



Engineer of Record:



MICHAEL THARP, P.E. 58869
3020 ZAHARIAS DR, ORLANDO, FL. 32837
Phone: (407) 694-4865
Email: mtharp@cfl.rr.com

THESE DOCUMENTS AND THEIR CONTENTS ARE THE PROPERTY OF QSIGMA & ASSOCIATES, LLC AND ANY REPRODUCTIONS, REVISIONS, MODIFICATIONS OR USE OF THESE DOCUMENTS WITHOUT THE EXPRESSED WRITTEN CONSENT OF Q-SIGMA & ASSOCIATES, LLC IS PROHIBITED BY LAW.

DESIGN / PROJECT COORDINATOR:

VN Construction and
Design Services, LLC

Vu Nguyen, GC
8273 Via Verona
Orlando, FL 32836
407-928-4148
vnconstructionllc@yahoo.com

Revisions/Comments:

Drawing Information

Drawn by:	RSIMON
Date:	6/13/22

City Nails
360 SW Port St. Lucie Blvd.
Port St. Lucie Fl., 34984

LIGHTING PLAN

E1