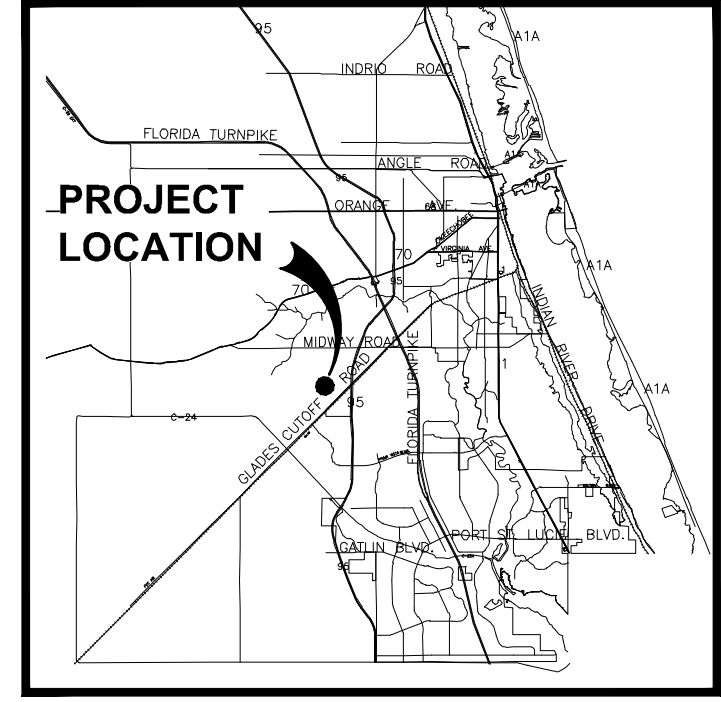


A.1  
1  
MEDIAN ENTRY SIGN WALL- ELEVATION  
SCALE: 1" = 30'

Key / Location:



Project Team:

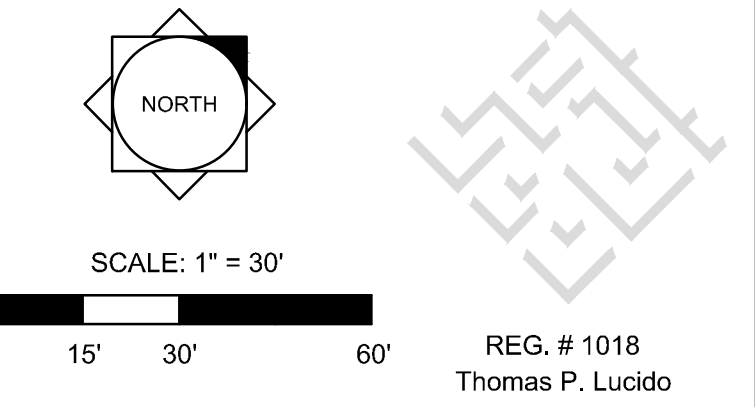
Owner/Developer:  
Midway Glades Developers, LLC  
7807 Baymeadows Road East, Suite 205  
Jacksonville, FL 32256  
Engineer:  
Kimley Horn And Associates  
445 24th Street, Suite 200  
Vero Beach, FL 32960  
772-794-4067  
Surveyor:  
Kimley Horn And Associates  
445 24th Street, Suite 200  
Vero Beach, FL 32960  
772-794-4067  
Landscape Architect/Land Planner:  
Lucido & Associates  
701 E Ocean Blvd  
Stuart, FL 34904  
772-220-2100



Glades Cut Off Road &  
Wylder Parkway  
Wylder Entrance Sign

City of Port St. Lucie, FL

Date	By	Description
11.23.21	KV	60% TO STRUCTURAL
24AUG22	SJS	Sign Location Shift



Designer	---	Sheet
Manager	---	
Project Number	---	
Municipal Number	---	
Computer File	20-535 Wylder - Glades Entrance Sign - 2.dwg	