

CODE INVESTIGATION FINDINGS

THE FOLLOWING CODES WERE AND IF APPLICABLE WERE USED IN THE DESIGN OF THIS PROJECT:

2020 FLORIDA BUILDING CODE, 7TH EDITION
EXISTING BUILDING, BUILDING, PLUMBING, FUEL GAS, MECHANICAL, TEST PROTOCOLS FOR HIGH VELOCITY HURRICANE ZONES, ACCESSIBILITY AND ENERGY.

2017 NATIONAL ELECTRICAL CODE NFPA 70

FLORIDA FIRE PREVENTION CODE 7TH EDITION (INCLUD. NFPA 1 AND 101 2018 EDITIONS)

OCCUPANCY TYPE: GROUP B - BUSINESS (PER FBC 2020/303.1.1)

OCCUPANT LOAD: 3486 S.F. DIVIDED BY 150 S.F./PERSON = 23 PERSONS

BUILDING TYPE: IIB (UNPROTECTED) - FULLY SPRINKLERED

NUMBER OF FLOORS: 1

FIRE/TENANT SEPARATION WALLS (WITHIN TENANT SPACE) : N/A

PUBLIC CORRIDOR SEPARATION: N/A

FLAME SPREAD RATING OF ALL CEILING AND WALL FINISH MATERIALS TO BE CLASS C PER FBC SECTION 803.5

FLAME SPREAD RATING OF FLOOR FINISHES TO BE PER FBC SECTION 804

LIFE SAFETY SUMMARY

FIRST FLOOR

TYPICAL:
EMERGENCY LIGHTING: BATTERY PACKS - SEE PLANS

FIRE SPRINKLER SYSTEM: NONE

FIRE ALARM SYSTEM: NONE

ITEM	REQUIRED	PROVIDED	REMARKS
EXITS	1	2	PER FBC 1006.2
EXIT DOOR WIDTH (NET)	2' 10" (32" MIN)	72"	PER FBC 1005
STAIR WIDTH	44"	N/A	PER 1009.4
COMMON PATH OF TRAVEL	100'	N/A	PER FBC 1006.2.1
TRAVEL DISTANCE	300'	SEE PLAN	PER FBC 1017.2
EXIT SEPARATION	N/A	N/A	PER 1007
DEAD END CORRIDOR	50' MAX	N/A	PER FBC TAB 1020.4

LEGEND



CEILING MOUNTED EXIT SIGN WITH BATTERY FED FROM LIGHTING CIRCUIT IN AREA
SEE SHEET E-1 FOR LOCATIONS. ADDITIONAL EXIT SIGNS MAY BE REQUIRED BY THE FIRE INSPECTOR AT THE TIME OF THE FIRE FINAL.

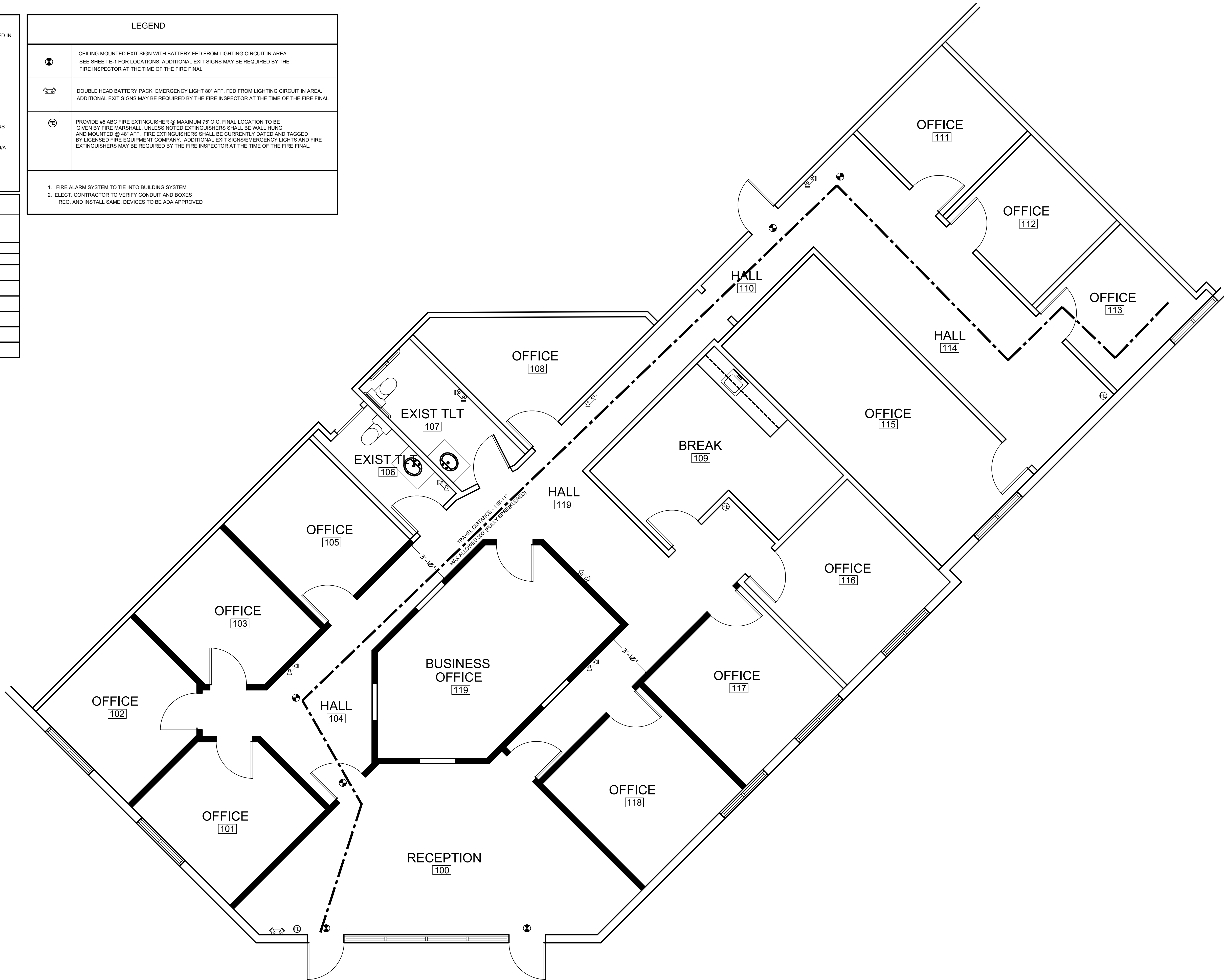


DOUBLE HEAD BATTERY PACK. EMERGENCY LIGHT 80" AFF. FED FROM LIGHTING CIRCUIT IN AREA.
ADDITIONAL EXIT SIGNS MAY BE REQUIRED BY THE FIRE INSPECTOR AT THE TIME OF THE FIRE FINAL.



PROVIDE #5 ABC FIRE EXTINGUISHER @ MAXIMUM 75' O.C. FINAL LOCATION TO BE GIVEN BY FIRE MARSHALL. UNLESS NOTED EXTINGUISHERS SHALL BE WALL HUNG AND MOUNTED @ 48" AFF. FIRE EXTINGUISHERS SHALL BE CURRENTLY DATED AND TAGGED BY LICENSED FIRE EQUIPMENT COMPANY. ADDITIONAL EXIT SIGNS/EMERGENCY LIGHTS AND FIRE EXTINGUISHERS MAY BE REQUIRED BY THE FIRE INSPECTOR AT THE TIME OF THE FIRE FINAL.

1. FIRE ALARM SYSTEM TO TIE INTO BUILDING SYSTEM.
2. ELECT. CONTRACTOR TO VERIFY CONDUIT AND BOXES REQ. AND INSTALL SAME. DEVICES TO BE ADA APPROVED



LIFE SAFETY PLAN

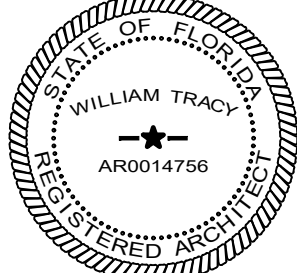
SCALE: 1/4" = 1'-0"



space planning and architecture

MB DESIGN ASSOCIATES, INC.
FLORIDA LICENSE #: AR0014756

P.O. Box 4376
Tequesta, Florida 33469
phone: (561) 222-2993
email: jill@mbdarch.com



THE FOLLOWING CODES WERE USED IN THE DESIGN OF THIS PROJECT:

2020 FLORIDA BUILDING CODE, 7TH EDITION
EXISTING BUILDING, BUILDING, PLUMBING, FUEL GAS, MECHANICAL, TEST PROTOCOLS FOR HIGH VELOCITY HURRICANE ZONES, ACCESSIBILITY AND ENERGY

2017 NATIONAL ELECTRICAL CODE NFPA 70A

FLORIDA FIRE PREVENTION CODE, 7TH EDITION (INCLUDING NFPA 1 AND 101, 2018 EDITION) WITH FLORIDA AMENDMENTS

PROJECT NAME/LOCATION:

SPEC SPACE

584 NW UNIVERSITY BLVD.
SUITE 300
PORT ST. LUCIE, FL

I (WE) HAVE REVIEWED THESE DRAWINGS, UNDERSTAND THE WORK OUTLINED THEREON, AND HEREBY APPROVE SAME FOR CONSTRUCTION.

BY:

DATE:

THESE DRAWINGS ARE BASED ON EXISTING DRAWINGS WHEN AVAILABLE, FIELD INSPECTION OF AS BUILT CONDITIONS AND OTHER INFORMATION FROM THE BUILDING OWNER, MAINTENANCE DEPARTMENT AND AS NOTED. INFORMATION WAS GATHERED WITHOUT "DESTRUCTIVE INVESTIGATION" (CUTTING INTO EXISTING SURFACES TO REVEAL STRUCTURE, PIPING, DUCTWORK, ETC). CONTRACTORS AND SUBCONTRACTORS ARE TO BASE BIDS ON INFORMATION SHOWN. SHOULD CONSTRUCTION REVEAL THAT EXISTING CONDITIONS ARE NOT AS ANTICIPATED OR AS SHOWN ON THESE DRAWINGS THE CONTRACTOR AND/OR SUBCONTRACTORS WILL NOTIFY THE OWNERTENANT OF THE DIFFERENCE AND THE PRICE WILL BE ADJUSTED UP OR DOWN TO REFLECT THE DISCREPANCY.

JOB #: 584 NW UNIV BLVD.

DATE: 1-31-2023

SCALE: VARIES

DRAWN BY: JM

ISSUED:

REVISIONS:

SHEET NO:

LS-1

OF 1