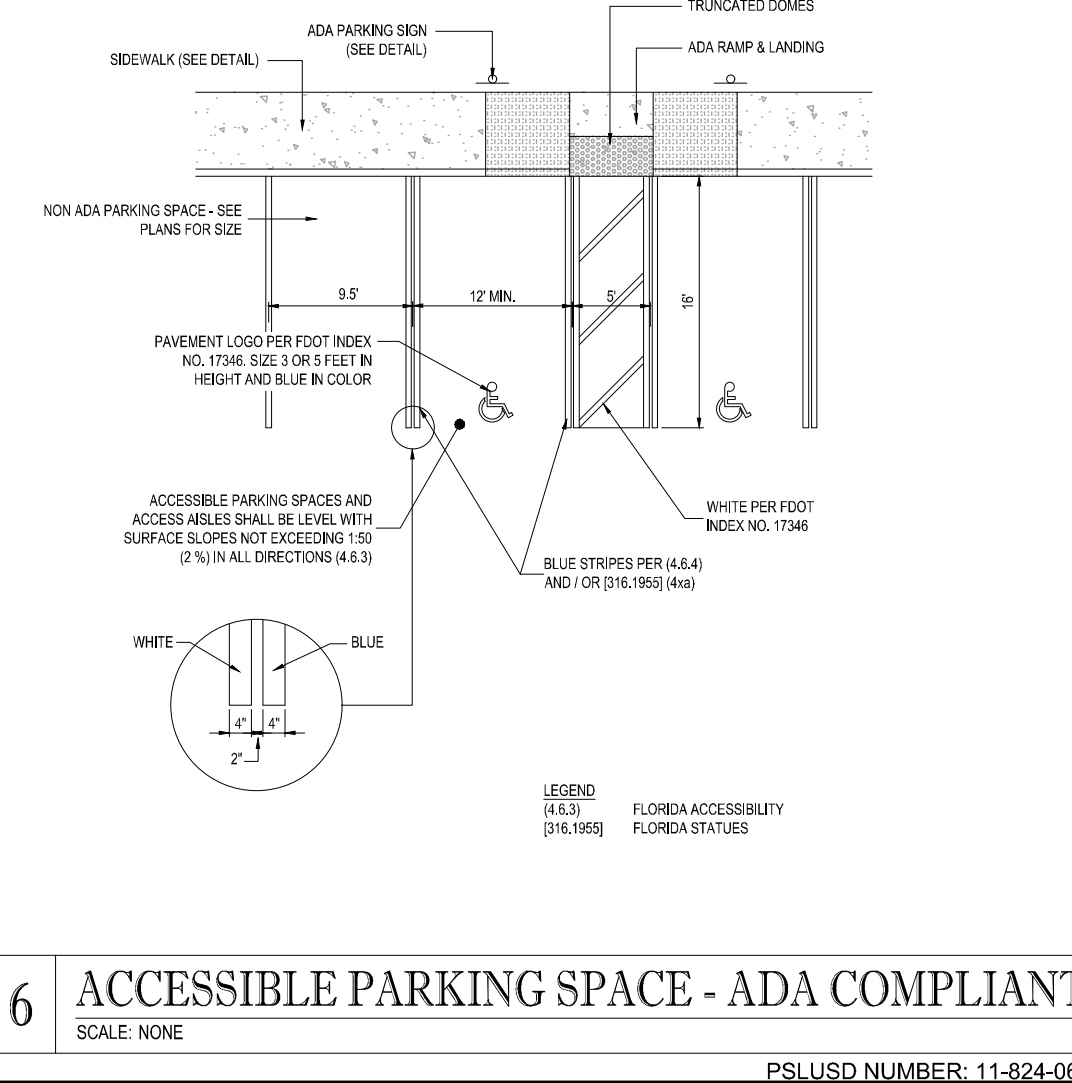
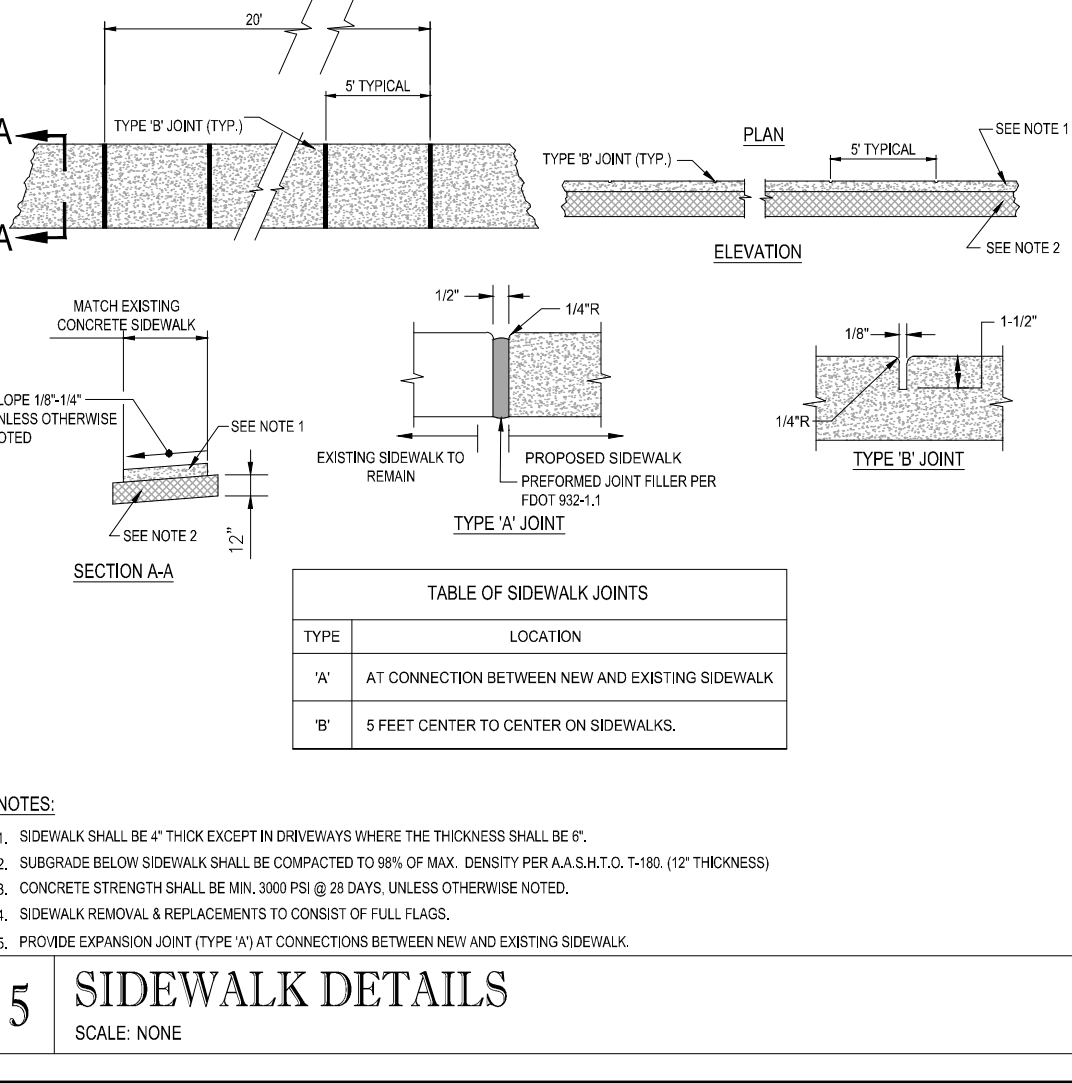
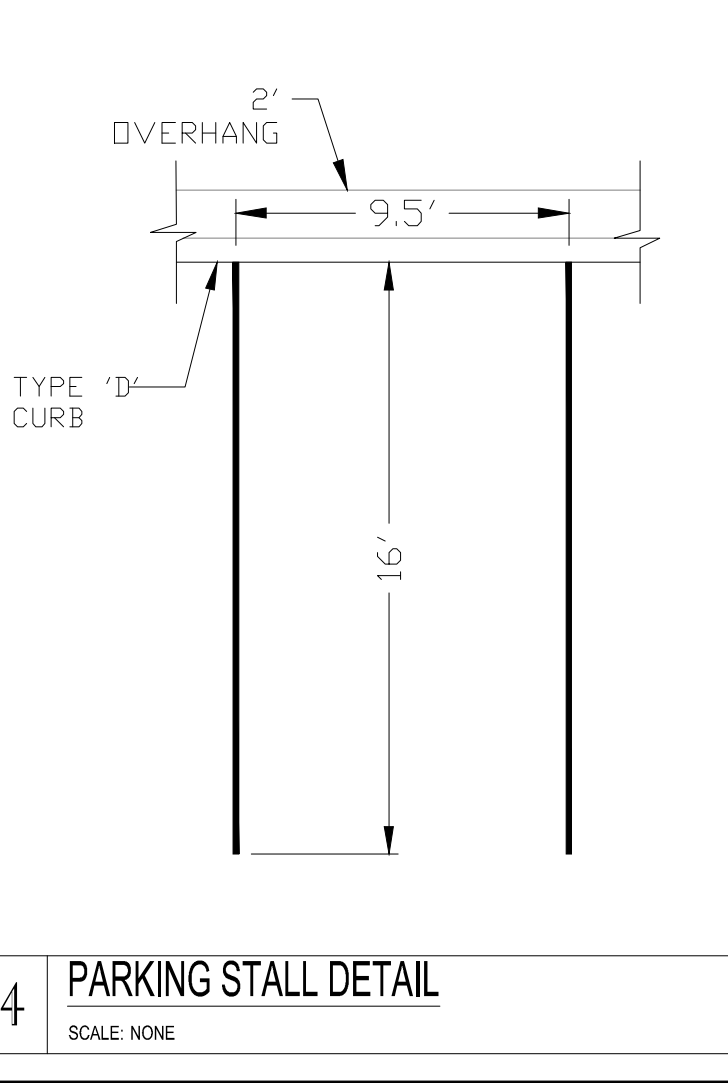
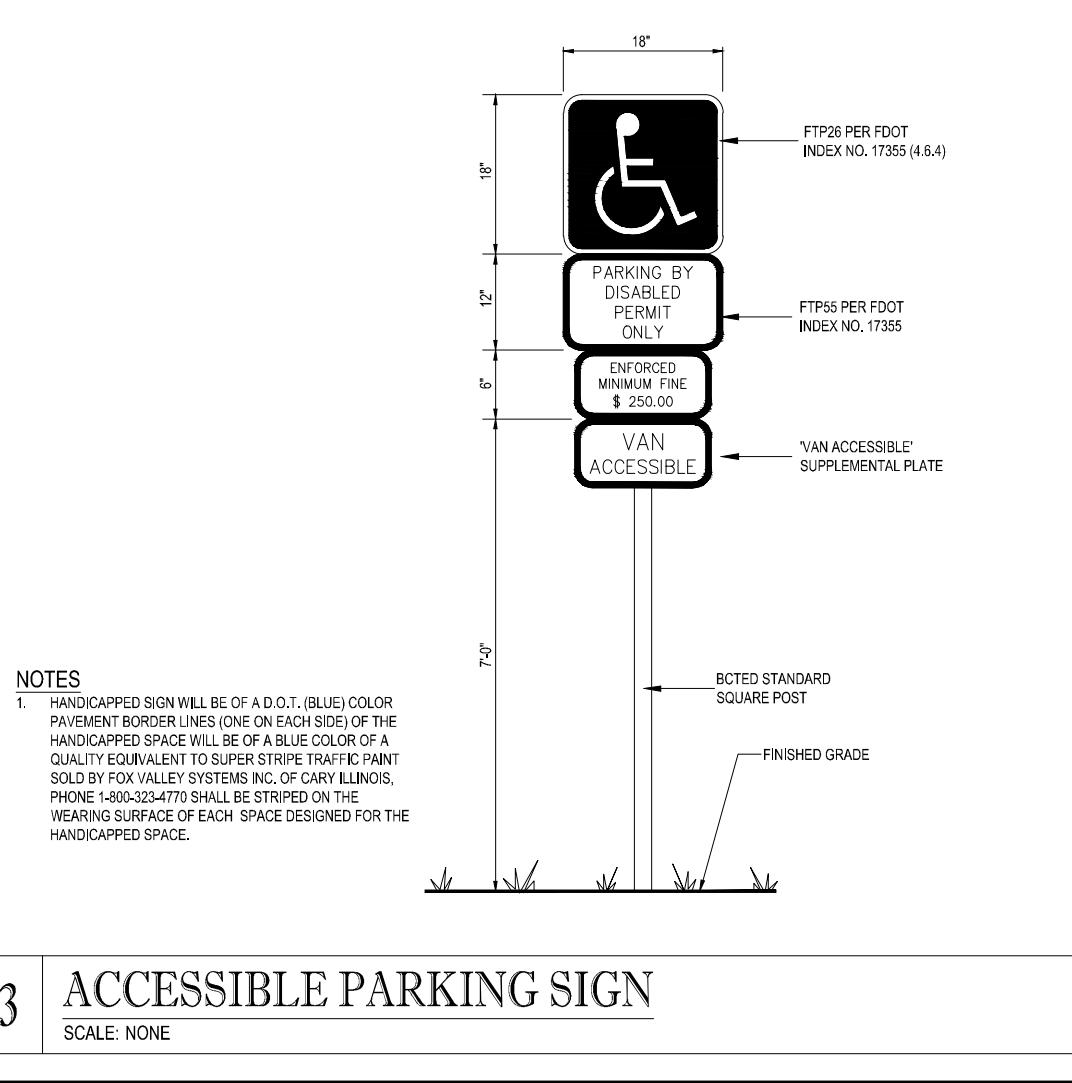
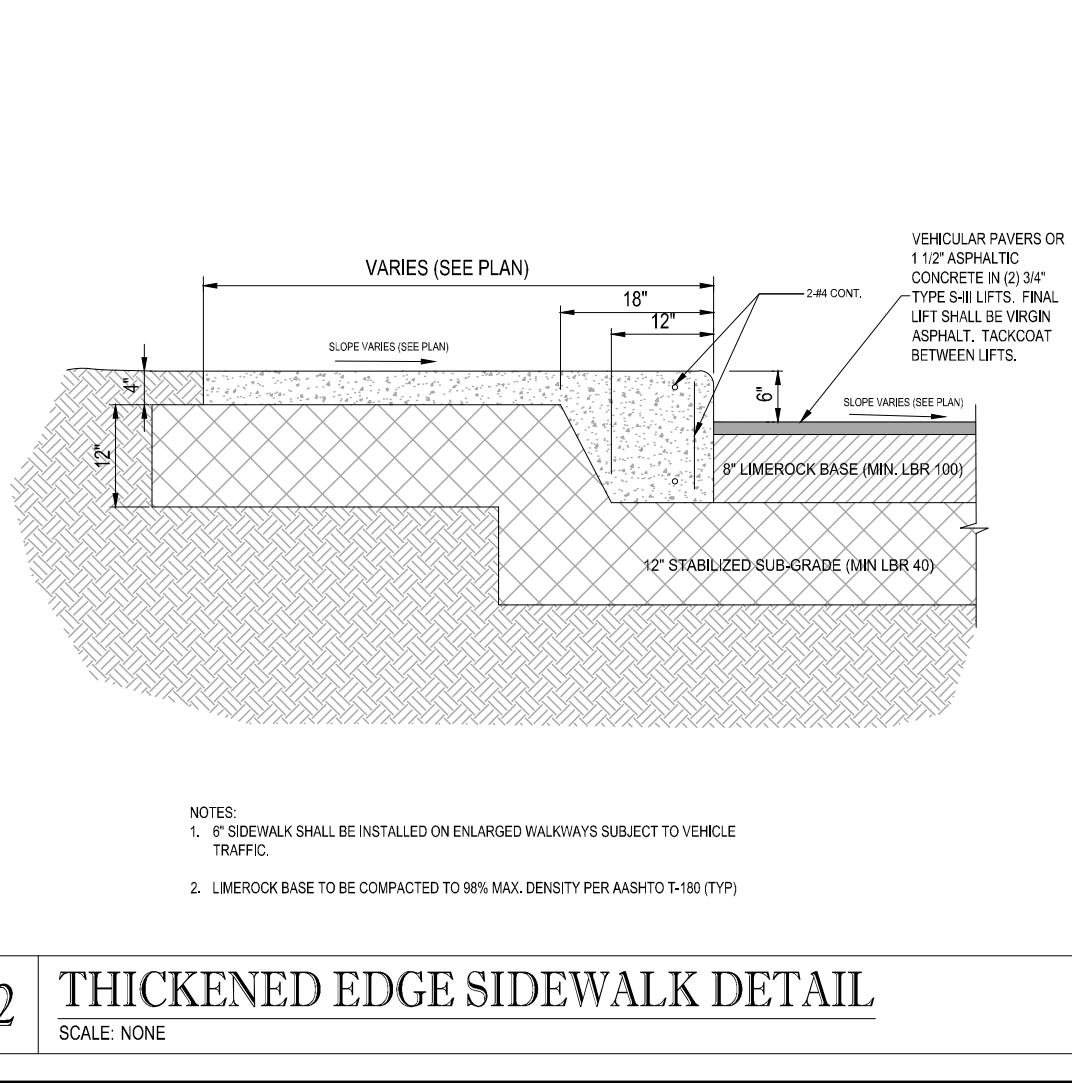
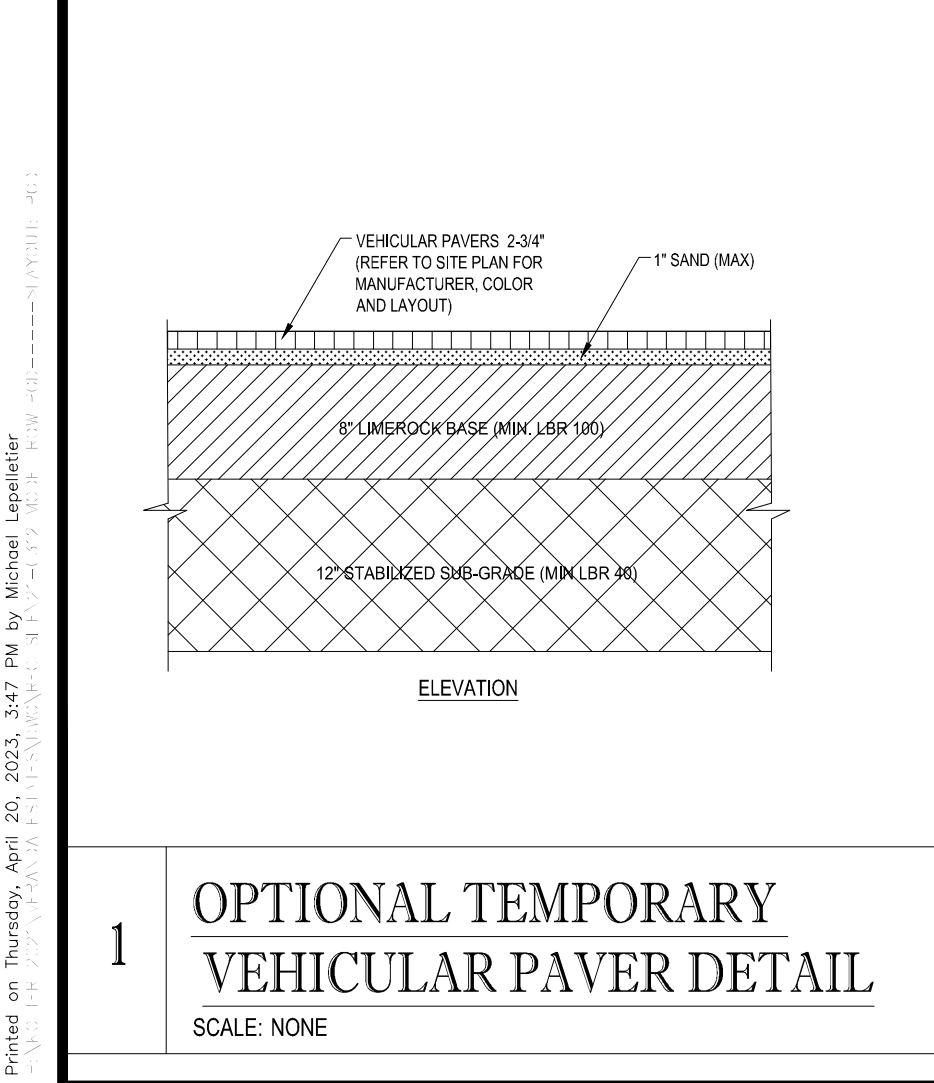
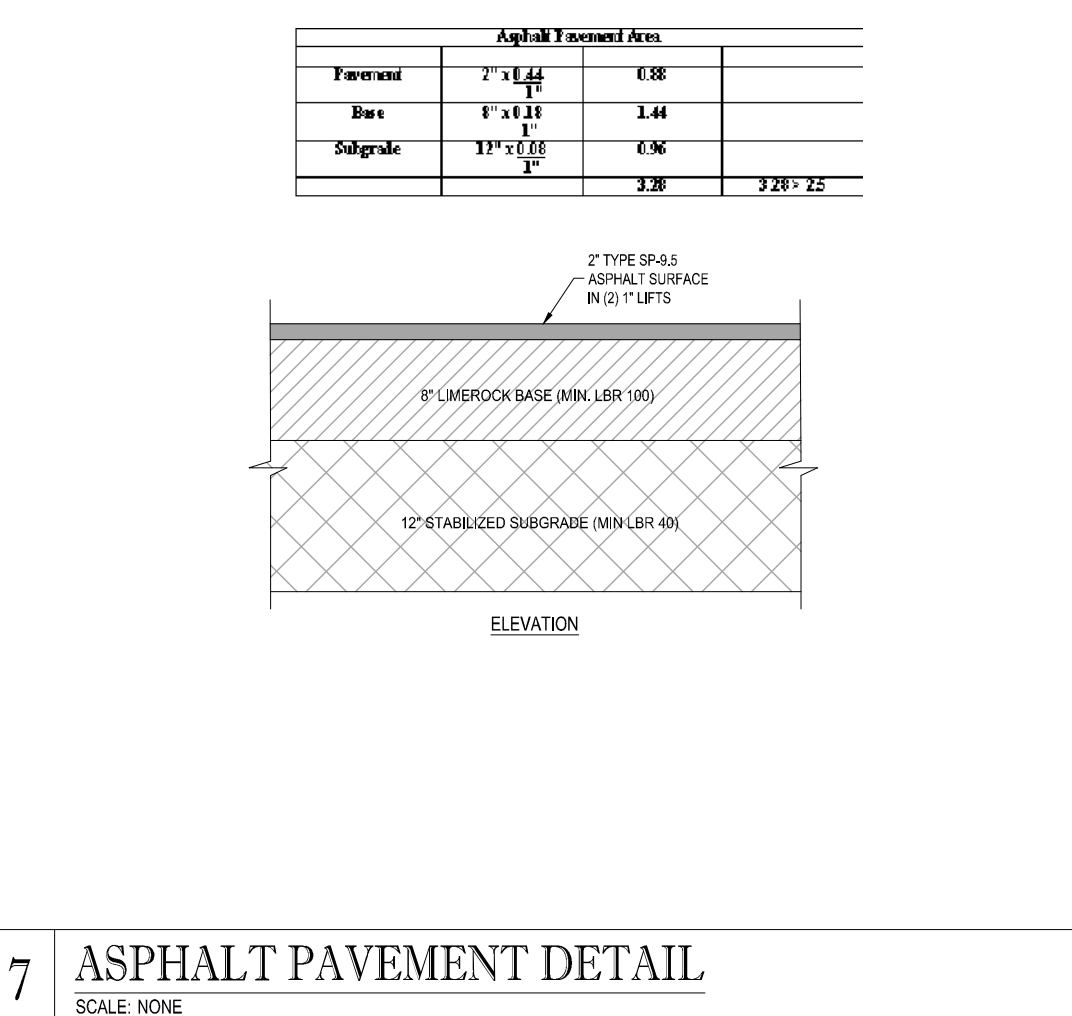


ALL EASEMENTS ARE
RECORDED IN PLAT
BOOK 107 PAGE 36

- ### CONSTRUCTION NOTES:
- CONTRACTOR TO SAW-CUT AT ALL LOCATIONS OF REMOVAL OF EXISTING CONC. S/W, CONC. CURB AND ASPHALT UNLESS OTHERWISE NOTED. ALL BASE AND SUBBASE MATERIAL SHALL BE REMOVED WITHIN THE PROPOSED LANDSCAPED AREA.
 - CONTRACTOR TO MATCH EXIST. GRADES AND TO CONSTRUCT A SMOOTH TRANSITION FROM EXISTING FACILITIES TO PROPOSED.
 - CONTRACTOR TO REMOVE ALL CONSTRUCTION DEBRIS FROM CONSTRUCTION SITE AND DISPOSE PER LOCAL ORDINANCES.
 - CONTRACTOR TO ENSURE ALL CONSTRUCTION IS IN ACCORDANCE WITH CITY DESIGN STANDARDS.
 - CONTRACTOR TO SOD ALL DISTURBED AREAS. SODDING INCLUDES MAINTAINING SLOPE AND SOD UNTIL COMPLETION AND ACCEPTANCE OF THE TOTAL PROJECT OR GROWTH IS ESTABLISHED WHICHEVER COMES LAST.
 - ALL EXISTING TRAFFIC SIGNS DISTURBED DURING CONSTRUCTION SHALL BE REINSTALLED WHERE APPLICABLE BY THE CONTRACTOR.
 - THESE PLANS REFLECT CONDITIONS KNOWN DURING PLAN DEVELOPMENT. IN THE EVENT THAT ACTUAL PHYSICAL CONDITIONS PREVENT THE APPLICATION OF THESE STANDARDS OR THE PROGRESSION OF THE WORK, THE CONTRACTOR SHALL NOTIFY THE ENGINEER PRIOR TO CONSTRUCTION OF AFFECTED AREA.
 - THE CONTRACTOR SHALL PROTECT ALL EXISTING STRUCTURES, STORM DRAINS, UTILITIES, AND OTHER FACILITIES TO REMAIN AND SHALL REPAIR ANY DAMAGES DUE TO HIS/HER CONSTRUCTION ACTIVITIES AT NO ADDITIONAL COST TO THE OWNER.
 - NOTIFY SUNSHINE STATE ONE CALL (1-800-432-4770) OR (811) PRIOR TO CONSTRUCTION.
 - PROJECT BASED ON DESIGN SURVEY PREPARED BY OTHERS.
 - THE CONTRACTOR SHALL NOT ENCROACH ONTO PRIVATE PROPERTY WITHOUT EASEMENTS NECESSARY FOR COMPLETION OF THE WORK.
 - DRAINAGE DESIGN BASED ON PENDING SFWMD APPLICATION #210408-5848.
 - MIN CROWN OF ROAD = 8.42 NAVD
 - MIN FFE = 10.59 NAVD
 - CE = 6.50 NAVD

ENGINEERING LEGEND

WATER MAIN	WM
STORM SEWER	SS
MANHOLE	M
PROPOSED ELEVATION	P
FIRE HYDRANT	F
LOT NUMBER / FINISH FLOOR	L / F
24" STOP BAR AND STOP SIGN	S



THOMAS

ENGINEERING GROUP

CIVIL ENGINEERS - PROJECT MANAGERS - LAND PLANNING - LANDSCAPE ARCHITECTS

4950 W. KENNEDY BLVD. #125 W. INDIANTOWN RD.
JUPITER, FL 33468
TAMPA, FL 33609
FT. LAUDERDALE, FL 33334
P. 813-379-1100
P. 813-203-7503
P. 954-202-7000

1000 CORPORATE DR.
JUPITER, FL 33468
P. 813-379-1100
P. 813-203-7503
P. 954-202-7000

REV	DATE	REVISIONS	COMMENT	BY
1	3-21-22	REV PER SPRC		MJL

811 KNOW WHAT'S BELOW
ALWAYS CALL 811
BEFORE YOU DIG
It's fast. It's free. It's the law.
www.callsunshine.com

PROJECT No.: FJ160006
DRAWN BY: MJL
CHECKED BY: BMU
DATE: 06-15-2021
CAD I.D.: 21-0312 MODEL ROW PGD

PROJECT:
VERANDA MOSAIC

FOR

PORT SAINT LUCIE
FLORIDA

THOMAS

ENGINEERING GROUP

PEBORTH PROFESSIONAL PLAZA
125 W. INDIANTOWN RD., SUITE 206
JUPITER, FL 33468
PH: (561) 203-7503
FX: (561) 203-7721
www.ThomasEngineeringGroup.com

BRANDON UEMER
No. 68345
PROFESSIONAL ENGINEER
April 20, 2023
FLORIDA LICENSE NO. 27528

SHEET TITLE:
PAVING GRADING AND DRAINAGE PLAN

SHEET NUMBER:
PGD-1

PSL PROJECT NUMBER: 21-126