

NP 3102 SH 3~ Adaptive 256

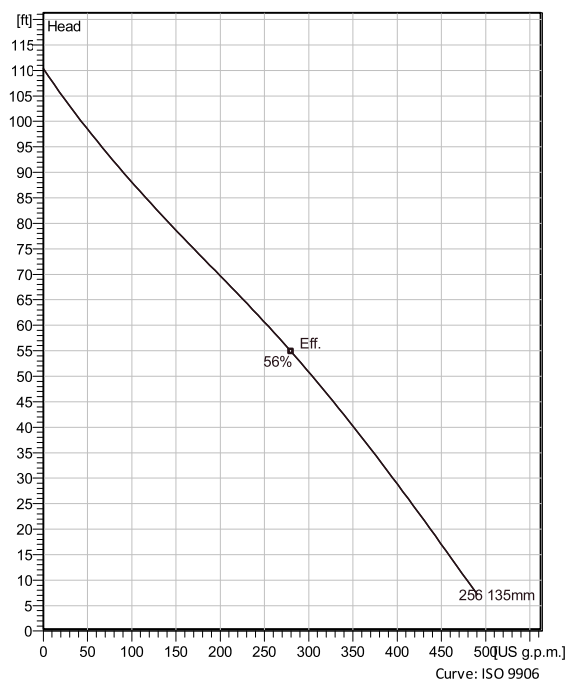
Patented self cleaning semi-open channel impeller, ideal for pumping in waste water applications. Possible to be upgraded with Guide-pin® for even better clogging resistance. Modular based design with high adaptation grade.



Technical specification



Curves according to: Water, pure [100%], 39.2 °F, 62.42 lb/ft³, 1.6891E-5 ft²/s



Configuration

Motor number N3102.920 18-10-2AS-W IE3 7.2hp	Installation type P - Semi permanent, Wet
Impeller diameter 135 mm	Discharge diameter 3 1/8 inch

Pump information

Impeller diameter 135 mm
Discharge diameter 3 1/8 inch
Inlet diameter 100 mm
Maximum operating speed 3600 rpm
Number of blades 2
Max. fluid temperature 40 °C

Materials

Impeller Hard-Iron™
Stator housing material Grey cast iron

Project
Block

Created by
Created on 10/12/2020

Last update

NP 3102 SH 3~ Adaptive 256

Technical specification



Motor - General

Motor number N3102.920 18-10-2AS-W IE3 7.2hp	Phases 3~	Rated speed 3600 rpm	Rated power 7.2 hp
ATEX approved No	Number of poles 2	Rated current 18 A	Stator variant 70
Frequency 60 Hz	Rated voltage 230 V	Insulation class H	Type of Duty S1
Version code 920			

Motor - Technical

Power factor - 1/1 Load 0.85	Motor efficiency - 1/1 Load 89.5 %	Total moment of inertia 0.254 lb ft ²	Starts per hour max. 30
Power factor - 3/4 Load 0.81	Motor efficiency - 3/4 Load 89.6 %	Starting current, direct starting 150 A	
Power factor - 1/2 Load 0.71	Motor efficiency - 1/2 Load 87.5 %	Starting current, star-delta 50 A	

Project
Block

Created by
Created on 10/12/2020

Last update

NP 3102 SH 3~ Adaptive 256

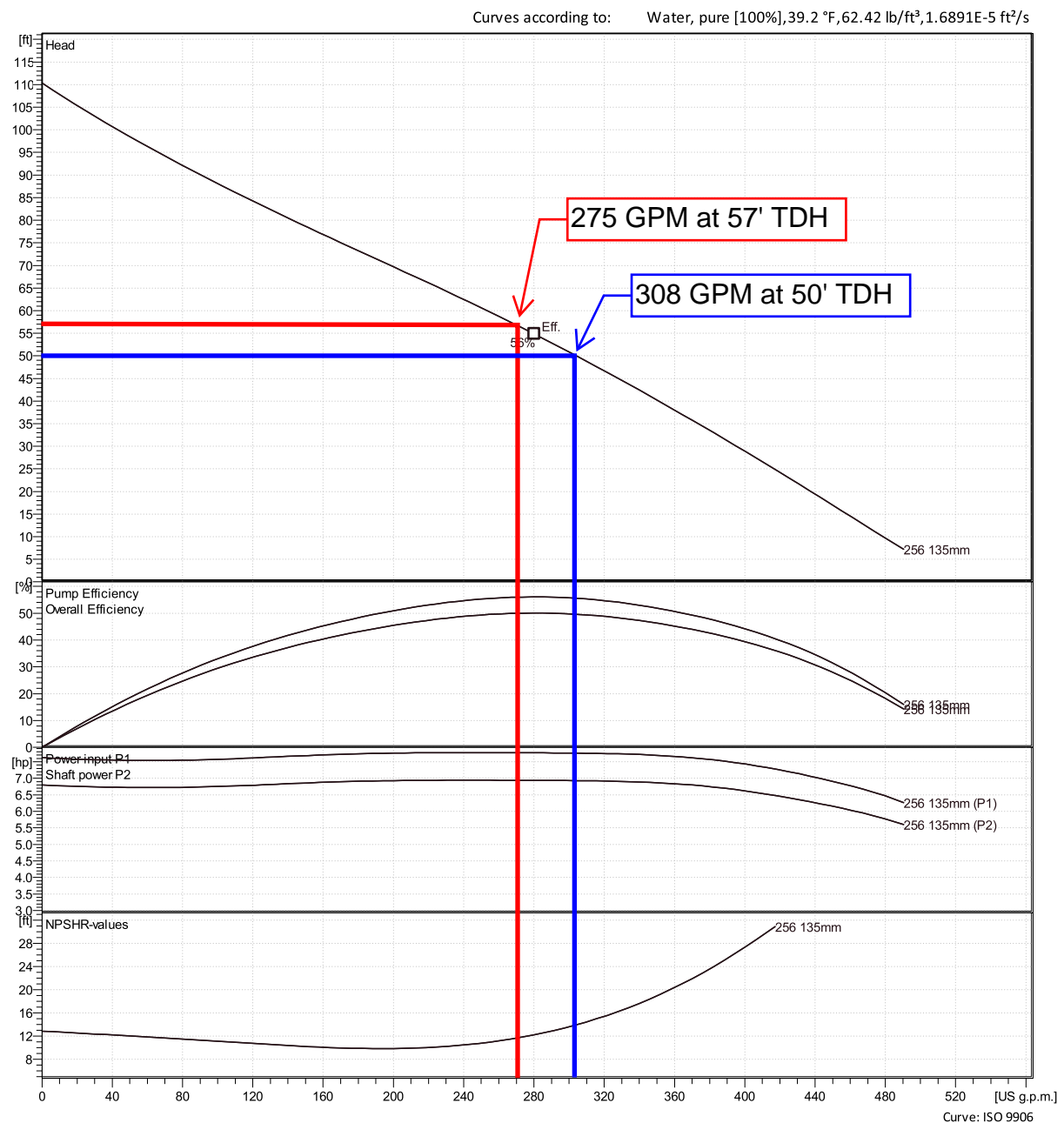
Performance curve



Duty point

Flow

Head



Project
Block

Created by
Created on 10/12/2020

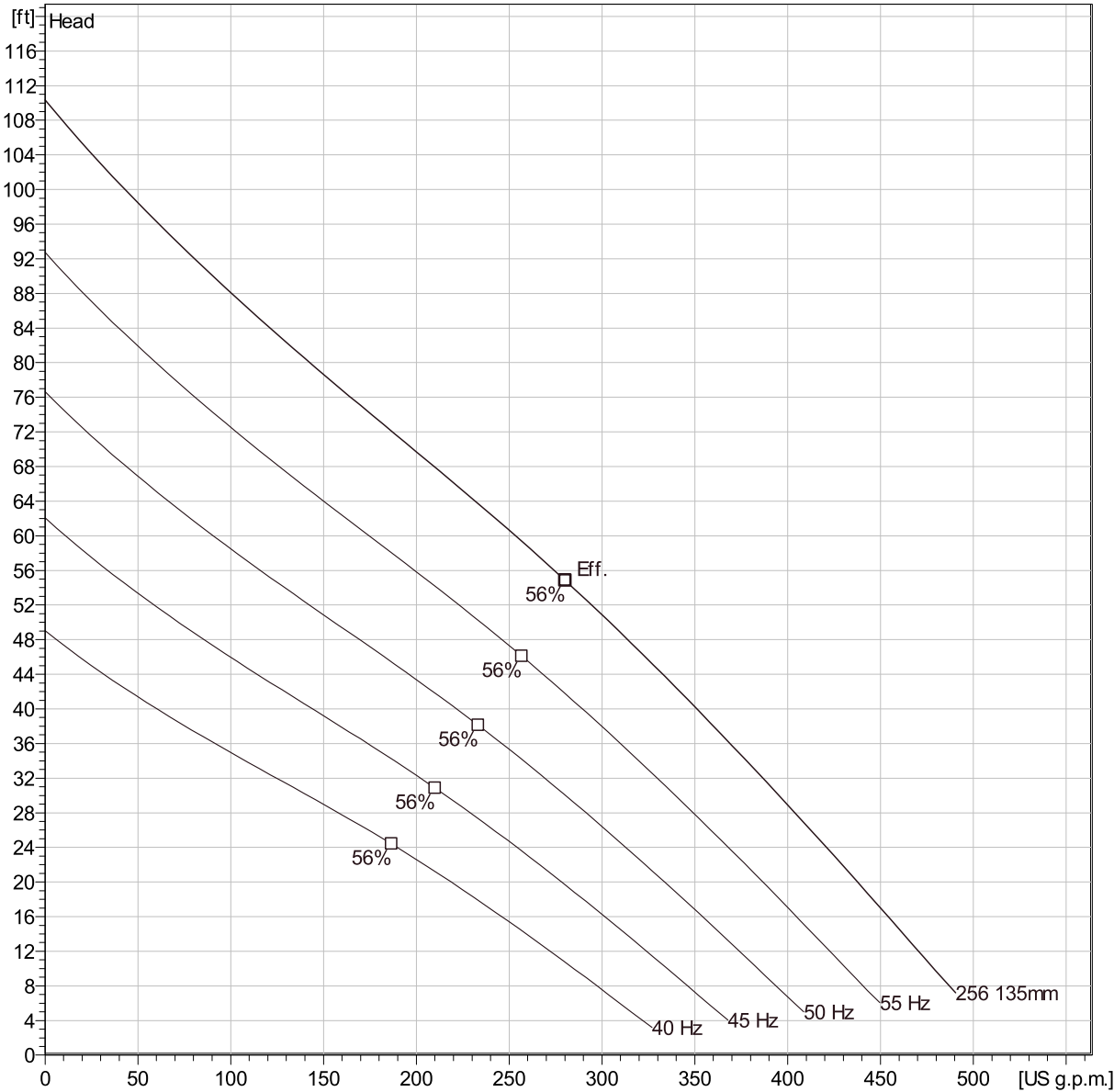
Last update

NP 3102 SH 3~ Adaptive 256

Duty Analysis



Curves according to: Water, pure [100%], 39.2 °F, 62.42 lb/ft³, 1.6891E-5 ft²/s



Operating characteristics

Pumps / Systems	Flow	Head	Shaft power	Flow	Head	Shaft power	Hydr.eff.	Specific Energy	NPSHre
-----------------	------	------	-------------	------	------	-------------	-----------	-----------------	--------

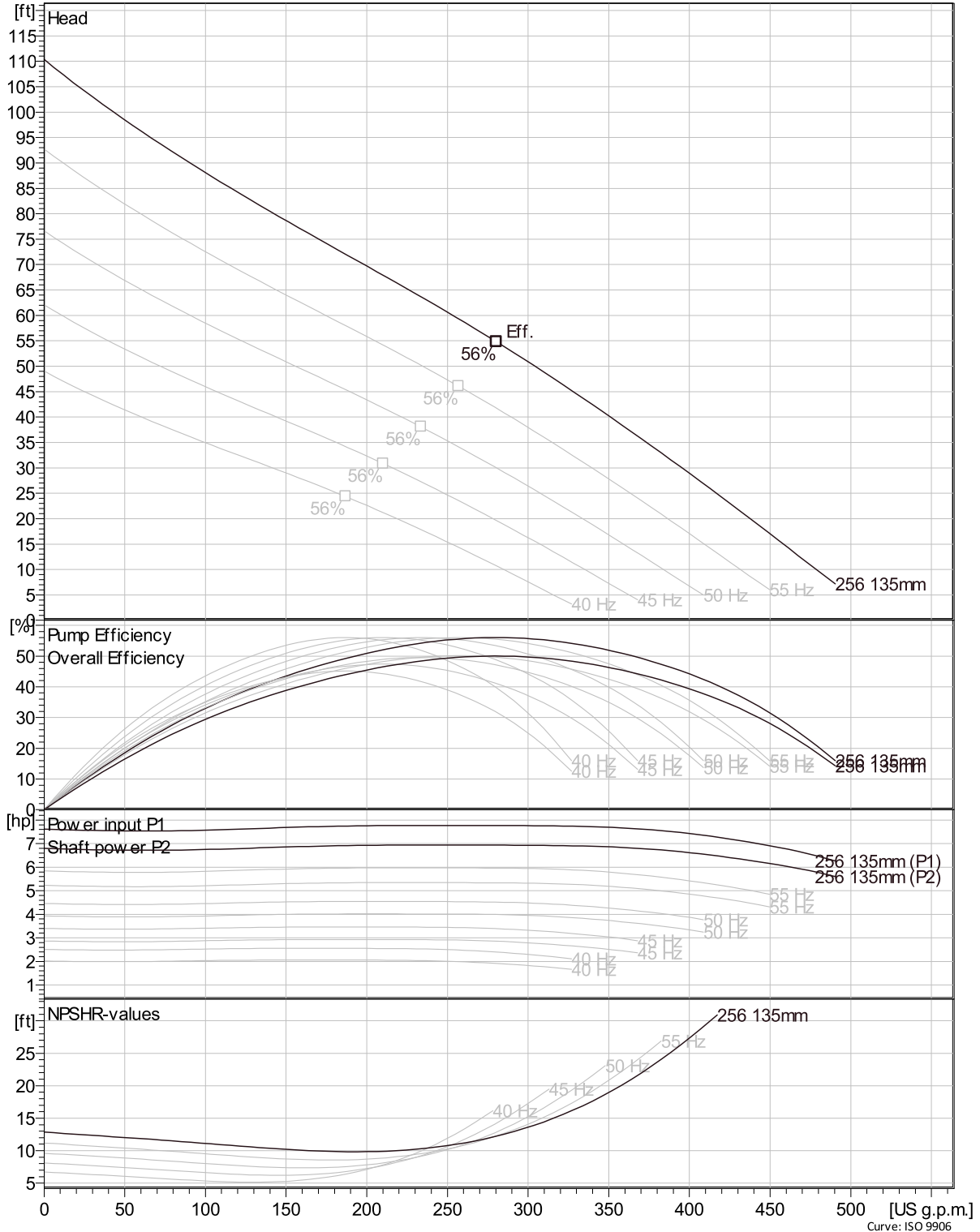
Project	Created by	Last update
Block	Created on 10/12/2020	

NP 3102 SH 3~ Adaptive 256

VFD Curve



Curves according to: Water, pure [100%], 39.2 °F, 62.42 lb/ft³, 1.6891E-5 ft²/s



Project
Block

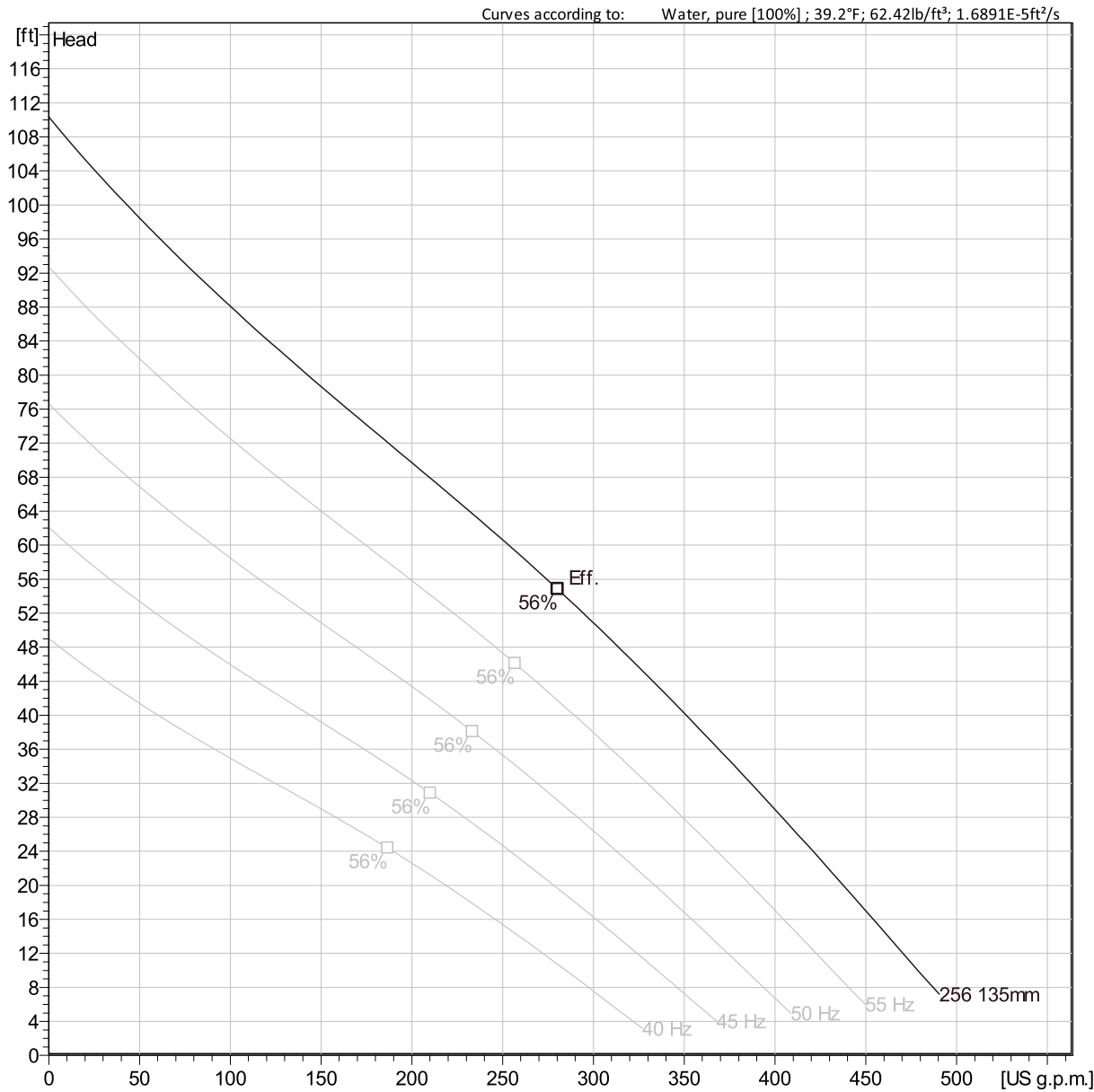
Created by
Created on 10/12/2020

Last update

Curve: ISO 9906

NP 3102 SH 3~ Adaptive 256

VFD Analysis



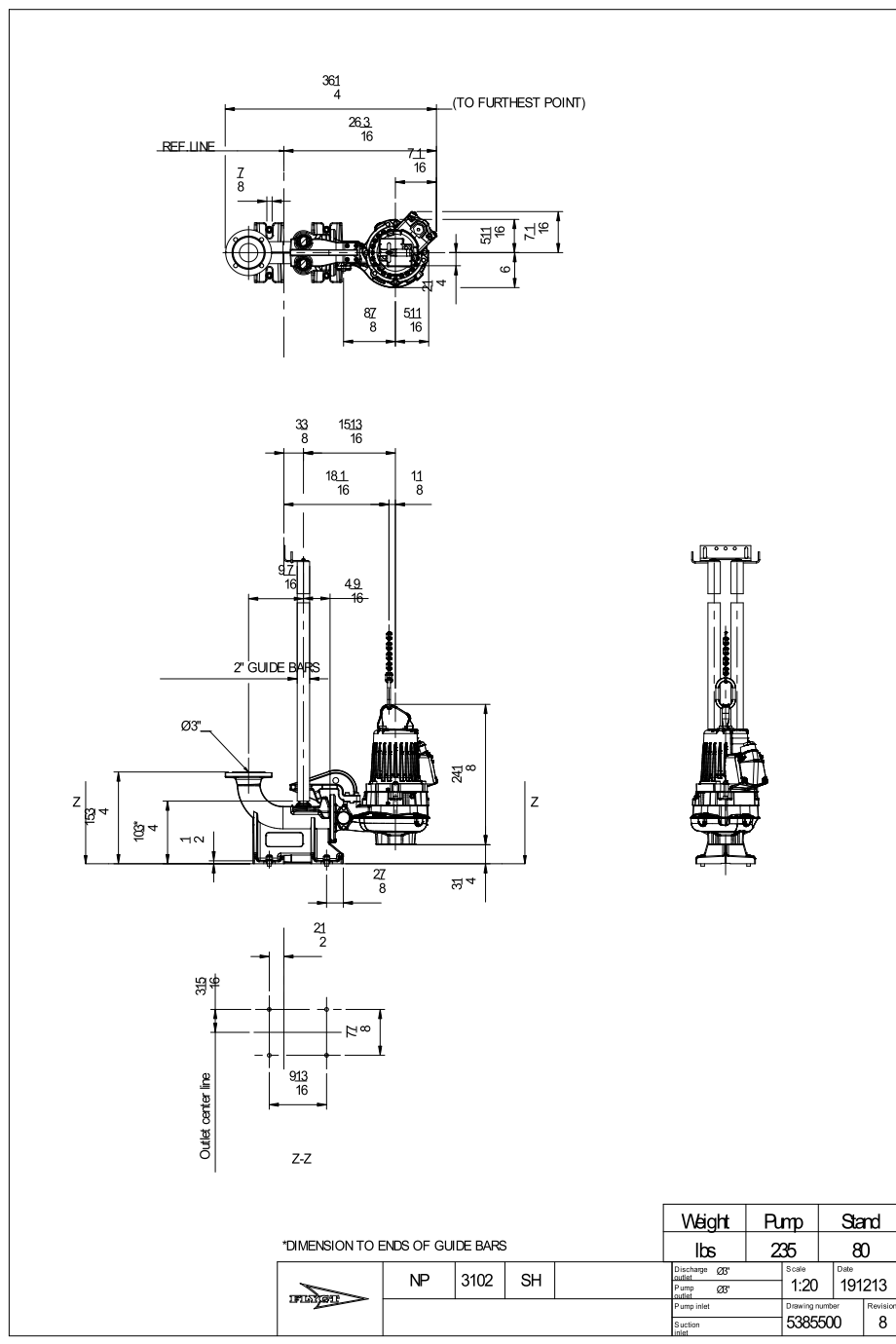
Operating Characteristics

Pumps / Systems	Frequency	Flow	Head	Shaft power	Flow	Head	Shaft power	Hydr.eff.	Specific Energy	NPSHre
-----------------	-----------	------	------	-------------	------	------	-------------	-----------	-----------------	--------

Project	Created by	Last update
Block	Created on 10/12/2020	

NP 3102 SH 3~ Adaptive 256

Dimensional drawing



Project
Block

Created by
Created on 10/12/2020

Last update