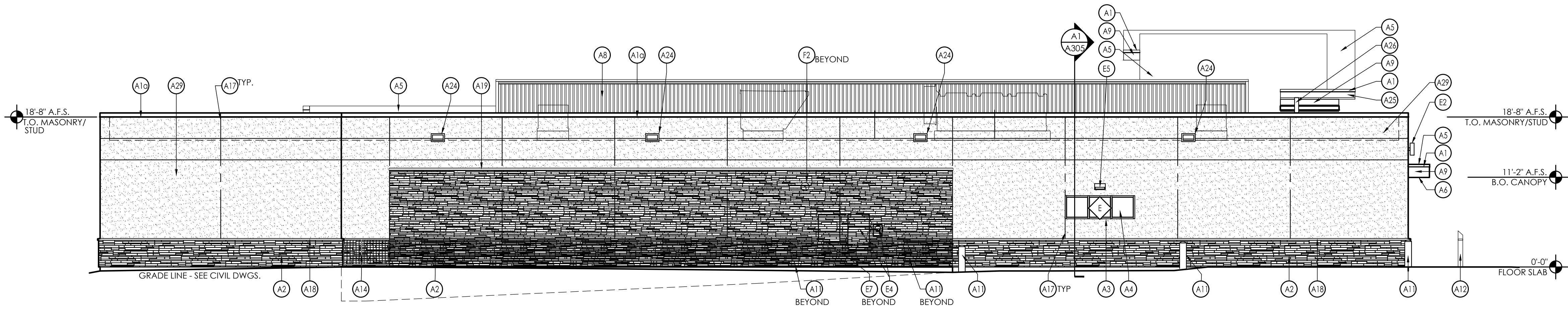
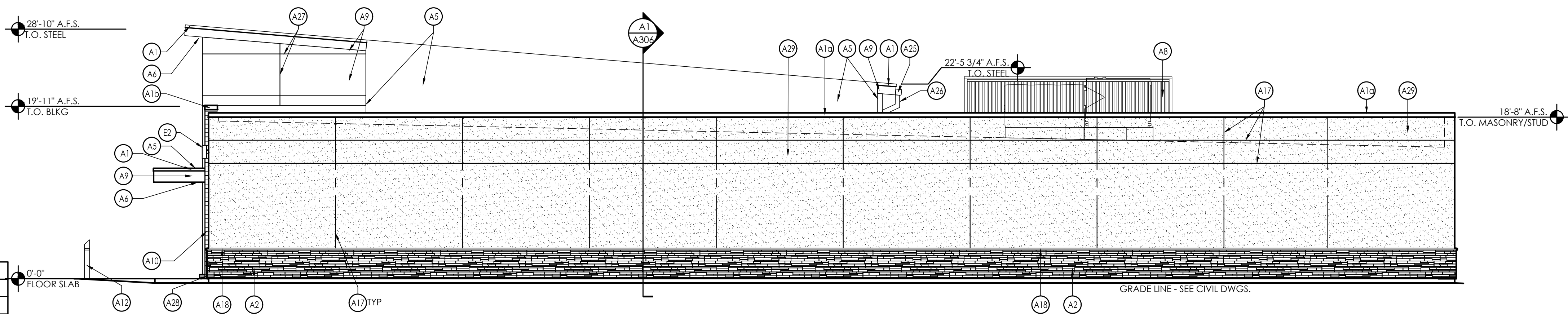


EXTERIOR FINISH SCHEDULE			
KEY	MATERIAL / MFG.	COLOR / NO.	NOTES
A1	PREFINISHED METAL ROOF EDGE TERMINATION	A1 - SILVER - AT HIGH ROOF & CANOPY A1a - GRANITE - AT STUCCO A1b - AGED BRONZE - AT NICHIIHA TOWER	SEE SPEC FOR ADDITIONAL INFO; NOTE AGED BRONZE IS CUSTOM COLOR PAINT (VALSPAR (SW) AGED BRONZE # 437R2398) ON POST FORMED ALUMINUM.
A2	MASONRY STONE VENEER (MSV) / BORAL CULTURED STONE	PROFIT LEDGESTONE - SOUTHWEST BLEND	
A3	PREFINISHED ALUM. SILL FLASHING	A3 - BRIGHT SILVER A3a - PETERSEN ALUMINUM - 'AGED BRONZE'	SEE SPEC FOR ADDITIONAL INFO; NOTE AGED BRONZE IS CUSTOM COLOR PAINT ON POST FORMED ALUMINUM.
A4	ALUMINUM STOREFRONT SYSTEM	ANODIZED ALUM.	RE: DWG. A602
A5	MEMBRANE ROOFING	GRAY	TOP OF SLOPED ROOF, CANOPY ROOF, AND BACK OF RAISED ROOF PROJECTIONS - SEE SPECIFICATIONS APPENDIX 'B'
A6	METAL SOFFIT PANELS	SOLID PANELS - SILVER METALLIC	RE: DWG. A301-A304
A7	EXTERIOR PAINT		RE: DWG. A603
A8	MECHANICAL SCREEN	PT-19 / PAINT COLOR TO MATCH DRYVIT COLOR #104 DOVER SKY	SEE STRUCT DWGS
A9	ALUMINUM COMPOSITE PANEL	BRIGHT SILVER	PROVIDE PANEL JOINTS AS SHOWN - PROVIDE ONE PIECE TIGHT FIT EXTRUDED MOLDING INSTALLATION SYSTEM WITH CENTER REVEAL TRIM BETWEEN PANELS AND J TRIM AT PANEL EDGES.
A10	NICHIIHA FIBER CEMENT EXTERIOR CLADDING	VINTAGEWOOD 'BARK'	CONTACT NICHIIHA AT 770-805-9466 FOR ORDERING. SEE SPEC FOR TRIM REQUIREMENTS AND ADDITIONAL INFO. ALL INCLUDED TRIM ('H', 'J', 'L', CORNER, ETC) TO MATCH FCP
A11	BLRD-2	PT-19 / CL-4	RE: DWG A603
A12	BLRD-4		RE: DWG A603
A13	NOT USED		
A14	GUARD RAIL	GALVANIZED STEEL	RE: DWG B2/A507
A15	BLRD-3	GALVANIZED	RE: DWG A603
A16	DOCK LEVELER / SEAL AND BUMPERS	LEVELER - FACTORY FINISH / SEAL AND BUMPERS - FACTORY FINISH - BLACK	PROVIDE CMU BEHIND DOCK SEAL
A17	MASONRY CONTROL JOINT		MAX 20' OC
A18	WATER TABLE-SILL / CULTURED STONE	2 1/2"X18"X3" CAST-FIT / PARCHMENT	SEE SPEC FOR ADDITIONAL INFORMATION; RE: DWG B3b/A503
A19	SLOPED WALL CAP / CULTURED STONE	14"X20"X2"-2 3/4" (AT PEAK) FLAGSTONE / CHAMPAGNE	SEE SPEC FOR ADDITIONAL INFORMATION
A20	ALDI TOWER SIGN	BY SIGN VENDOR	7'-11 1/8" w. x 9'-5 1/2" h.; VERIFY SIGN SIZE PRIOR TO FRAMING OPENING SEE DETAIL C1/A504
A21	CRTB	NATURAL	RE: DWG A603 - SEE STRUCTURAL DWGS
A22	KNOX BOX	FACTORY FINISH	CONFIRM TYPE AND LOCATION WITH LOCAL FIRE MARSHAL
A23	AUTO DOOR SYSTEM & TRANSOM	ANODIZED ALUMINUM	RE: DWG A601 & A602

EXTERIOR FINISH SCHEDULE			
KEY	MATERIAL / MFG.	COLOR / NO.	NOTES
A24	14" OVERFLOW SCUPPER	PT-19/CL-9	RE: DWG A2/A507
A25	8" X 8" PRE-FINISHED ALUM GUTTER	MATCH PREFINISHED METAL COPING	RE: DWG C3/A501
A26	8" X 8" PRE-FINISHED ALUM DOWNSPOUT	MATCH PREFINISHED METAL COPING	TERMINATE AT CONC. SPLASH BLOCK
A27	ACP H/J TRIM / JOINT COVER		TYPICAL AT EDGES AND BUTT JOINTS OF ACP
A28	NICHIIHA FIBER CEMENT PANEL BASE FLASHING	PETERSEN ALUMINUM - 'AGED BRONZE'	SEE SPEC FOR ADDITIONAL INFO; NOTE AGED BRONZE IS CUSTOM COLOR PAINT ON POST FORMED ALUMINUM.
A29	STUCCO	MATCH DRYVIT COLOR #104 - 'DOVER SKY'	SEE SPECIFICATION
A30	DUMPSTER GATE	WINCHESTER GREY	RE: DWG C2/A507
A31	NICHIIHA CONTROL JOINT WITH "H" CLIP		
A32	SMOOTH FACE CMU	GRAY BLOCK	
E1	EXIT DISCHARGE LIGHT	FACTORY FINISH	MOUNT @ 8'-0" A.F.S.
E2	WALL SCONCE	FACTORY FINISH	MOUNT @ 14'-8" A.F.S.; RE: DWG. A111 FOR DIMENSIONS
E3	JUNCTION BOX WITH COVER FOR FUTURE CARD READER		MOUNT CENTERED @ 46" A.F.S., SEE ELEC DWGS
E4	UTILITY METERING & C.T.	FACTORY FINISH	SEE ELECTRICAL DWGS
E5	EXTERIOR WALL PACK	FACTORY FINISH	MAN DOORS - MOUNT @ 9'-0" A.F.S., BREAK ROOM WINDOW @ 10'-0" A.F.S.
E6	EXTERIOR DUPLEX RECEPTACLE	FACTORY FINISH	LOADING DOCK - MOUNT @ 12'-0" A.F.S.
E7	GENERATOR QUICK CONNECT	FACTORY FINISH	MOUNT @ 1'-6" A.F.S. IN 4' SQUARE J-BOX
E8	EXTERIOR UPLIGHTING FIXTURES	FACTORY FINISH	SEE ELEC DWGS
F1	NOT USED	FACTORY FINISH	SEE FIRE PROTECTION DWGS
F2	MOTOR GONG	FACTORY FINISH	SEE FIRE PROTECTION DWGS
P1	HOSE BIB	FACTORY FINISH	SEE PLUMBING DWGS
XX	GLAZING KEY		RE: DWG A602
XX	ALIGN KEY		A: ALIGN NICHIIHA PANEL JOINTS AND WINDOW MULLIONS B: ALIGN ALUMINUM COMPOSITE PANEL JOINTS AND NICHIIHA PANEL JOINTS C: ALIGN NICHIIHA PANEL JOINTS, ALUMINUM COMPOSITE PANEL JOINTS, AND WINDOW MULLIONS



2 South Elevation
SCALE: 1/8" = 1'-0"



1 West Elevation
SCALE: 1/8" = 1'-0"

SIGNAGE			
DESCRIPTION	QUANTITY	SQ. FT. PER SIGN	TOTALS
TOWER SIGN	2	74.9	149.8
TOTAL SIGNAGE			149.8
SIGNAGE IS SHOWN FOR REFERENCE ONLY AND SHALL BE UNDER SEPARATE PERMIT SUBMITTAL			

Copyright © 2023

APD Engineering & Architecture
615 Fishers Run
Victor, NY 14564
585.742.2222

Drawing Alteration

It is a violation of law for any person, unless acting under the direction of licensed Architect, Professional Engineer, Landscape Architect, or Land Surveyor to alter any item on this document in any way. Any licensee who alters this document is required by law to offix his or her seal and to add the notation "Altered By" followed by his or her signature and the specific description of the alteration or revision.

DO NOT SCALE PLANS

Copying, Printing, Software and other processes required to produce these prints can stretch or shrink the actual paper or layout. Therefore, scaling of this drawing may be inaccurate. Contact APD E&A with any need for additional dimensions or clarifications.

Issued: Date:

A	Issued for Owner Review	04/21/23
B		
C		
D		
E		

Revisions: Date:

1		
2		
3		
4		
5		
6		
7		
8		
9		
10		
11		
12		

PROJECT ARCHITECT/ENGINEER DATE

PROJECT LEAD DATE

Seal Seal



ALDI Inc. Store #: 74
Port St. Lucie
10300 SW Discovery Way
Port St. Lucie, FL 34987
St. Lucie County
Project Name & Location:

Exterior Elevations Drawing Name:	Project No. 21-0371A
Date: 03/08/23	
Type: LHRDV7ER	
Drawn By: TBW	A-202
Scale: As Noted	Drawing No.