

PLANT LIST

TREES

SYM	QTY.	BOTANICAL NAME	COMMON NAME	HEIGHT	SPR.	NOTES:
M HR	23	HIBISCUS ROSA-SINENSIS	PINK HIBISCUS	6-7' O.A. STD.	3-4'	FULL & THICK, SINGLE TRUNK STD.
* V SP	80	SABAL PALMETTO	CABBAGE PALM (SLICK)	18-22' C.T.	N/A	HURRICANE CUT, STAGGER HEIGHTS
* V QV	25	QUERCUS VIRGINIANA	LIVE OAK	12-14' O.A., 2.5" DBH	5'	FULL & THICK
* V IC	12	ILEX CASSINE	DAHOON HOLLY	12-14' O.A., 2.5" DBH	5'	FULL & THICK
M TC	4	TABEBUIA CARAIBA	YELLOW TABEBUIA	12-14' O.A., 2.5" DBH	5'	FULL & THICK
M WB	12	WODYETIA BIFURCATA	FOXTAIL PALM	6' G.W.	N/A	FULL & THICK, MATCHED HEIGHTS

SHRUBS & GROUNDCOVERS

SYM	QTY.	BOTANICAL NAME	COMMON NAME	SIZE	SPACING	NOTES
* V HPA	185	HAMELIA PATENS	FIREBUSH	#3, 24" O.A.	24" O.C.	FULL & THICK
M CER	319	CONOCARPUS ERCTUS	GREEN BUTTWOOD	#3, 24" O.A.	24" O.C.	FULL & THICK
M PMA	17	PODOCARPUS MACROPHYLLUS	JAPANESE YEW	#15, 5" O.A.	36" O.C.	FULL & THICK

\* ASTERISK DENOTES NATIVE PLANT MATERIAL  
V INDICATES VERY DROUGHT TOLERANT PLANT MATERIAL  
M INDICATES MODERATELY DROUGHT TOLERANT PLANT MATERIAL

SOD: ST. AUGUSTINE 'FLORITAM'  
MULCH: 3" SHREDDED MELALEUCA MULCH (OR APPROVED RECYCLED MULCH) TO BE APPLIED TO ALL PLANTING BEDS.

IRRIGATION NOTE:  
ALL NEW LANDSCAPE AREAS SHALL BE RECEIVE 100% OVERLAP COVERAGE FROM A FULLY AUTOMATIC IRRIGATION SYSTEM EQUIPPED WITH A RAIN SENSOR.

LANDSCAPE NOTES

1. ALL PLANT MATERIAL SHALL BE FLORIDA NUMBER 1 OR BETTER AS DEFINED BY THE DIVISION OF PLANT INDUSTRY "GRADES AND STANDARDS" LATEST EDITION.
2. ALL LANDSCAPE SHALL CONFORM TO THE REQUIREMENTS OF THE CITY OF PORT ST. LUCIE LAND DEVELOPMENT REGULATIONS.
3. THE LANDSCAPE CONTRACTOR SHALL NOT MAKE ANY SUBSTITUTIONS CHANGES WITHOUT THE AUTHORIZATION OF THE CITY OF PORT ST. LUCIE, THE OWNER, AND THE LANDSCAPE ARCHITECT.
4. THE LANDSCAPE CONTRACTOR SHALL REVIEW THE PROJECT DRAINAGE AND UTILITY PLANS PRIOR TO CONSTRUCTION AND AVOID ALL CONFLICTS. THE LANDSCAPE CONTRACTOR SHALL VERIFY THE LOCATION OF ALL UNDERGROUND UTILITIES PRIOR TO COMMENCING WORK.
5. THE LANDSCAPE CONTRACTOR SHALL BE RESPONSIBLE FOR ALL PERMITS.
6. ALL TREES SHALL BE LOCATED WITHIN A MULCH PLANTING BED WITH A MINIMUM OF TWO (2) FEET OF CLEARANCE TO THE EDGE OF THE BED.
7. ALL SOD SHALL BE STENOTAPHRUM SECONDATUM FLORITAM (ST. AUGUSTINE SOD).
8. ALL VEGETATION SHALL BE SELECTED AND POSITIONED SO THAT IT DOES NOT PRESENT OBSTRUCTIONS TO THE LINE OF SIGHT AT INTERSECTIONS PURSUANT TO FLORIDA DEPARTMENT OF TRANSPORTATION SIGHT LINE GUIDELINES.
9. CLEAR VISIBILITY SHALL BE MAINTAINED BETWEEN 10" AND 8' WITHIN SIGHT VISIBILITY TRIANGLES. TWENTY BY TWENTY FOOT SIGHT VISIBILITY TRIANGLES SHALL BE PROVIDED AT THE INTERSECTIONS WITH THE PUBLIC RIGHT OF WAY. IN ADDITION, ALL LANDSCAPING SHALL CONFORM TO THE REQUIREMENTS OF FDOT INDEX 546.
10. ALL LANDSCAPE ISLANDS AND BEDS WILL BE FREE OF SHELL ROCK AND CONSTRUCTION DEBRIS, EXCAVATED TO A DEPTH OF 30 INCHES OR TO CLEAN NATIVE SOILS AND FILLED WITH THE SPECIFIED BACKFILL MIXTURE.
11. ALL PROPOSED LANDSCAPE AREAS SHALL RECEIVE 100% OVERLAP COVERAGE FROM A FULLY AUTOMATIC IRRIGATION SYSTEM EQUIPPED WITH A RAIN SENSING DEVICE ACCORDING TO LOCAL AND STATE CODES. IRRIGATION WATER SHALL BE POTABLE WATER.
12. ALL ABOVE GROUND UTILITIES SHALL BE SCREENED FROM VIEW ON THREE SIDES WITH AN APPROPRIATE HEDGE MATERIAL. HEIGHT OF PLANT MATERIAL AT TIME OF INSTALLATION SHALL BE AT LEAST AS TALL AS THE UTILITY BEING SCREENED AND SHALL BE SPACED APPROPRIATELY IN ORDER TO PROVIDE COMPLETE SCREENING OF UTILITY WITHIN ONE YEAR OF INSTALLATION.
13. ALL TREES NOT LOCATED WITHIN A LANDSCAPE BED SHALL RECEIVE A 4-5' DIA. MULCH RING.
14. ALL EXOTIC AND NUISANCE VEGETATION SHALL BE REMOVED FROM SUBJECT PROPERTY PRIOR TO ANY CERTIFICATE OF OCCUPANCY.
15. PRIOR TO THE REMOVAL OR RELOCATION OF ANY TREES ON THE PROPERTY, A TREE ALTERATION PERMIT SHALL BE SUBMITTED, REVIEWED AND APPROVED BY THE DEVELOPMENT SERVICES DEPARTMENT, PLANNING DIVISION.

LANDSCAPE DATA:

PERIMETER BUFFER REQUIREMENTS:

SIDE:	LENGTH:	TREES REQ'D. (1/30 L.F.)	TREES PROVIDED:
WEST	370.06'	12 TREES	12 TREES
NORTH	225'	8 TREES	8 TREES
EAST	368.45'	12 TREES	12 TREES
TOTALS:		32 TREES	32 TREES

- ALL PERIMETER BUFFERS CONTAIN A CONTINUOUS 24" TALL HEDGE
- ALL PERIMETER BUFFERS ARE MIN. 10' WIDE

BUILDING FACADE LANDSCAPE REQUIREMENTS:

TOTAL LENGTH OF FACADES:	2,033 L.F.
REQUIRED TREES:	68 TREES (1/30 L.F.)
PROVIDED TREES:	68 TREES

PARKING LOT LANDSCAPE REQUIREMENTS:

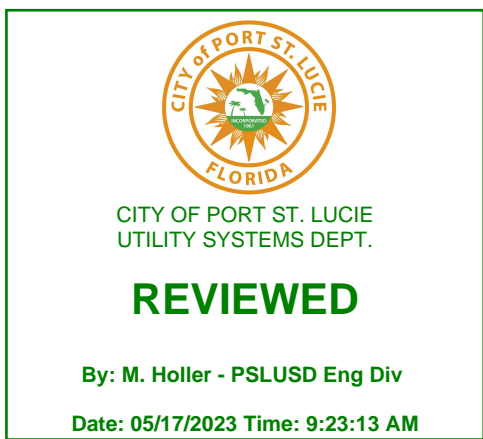
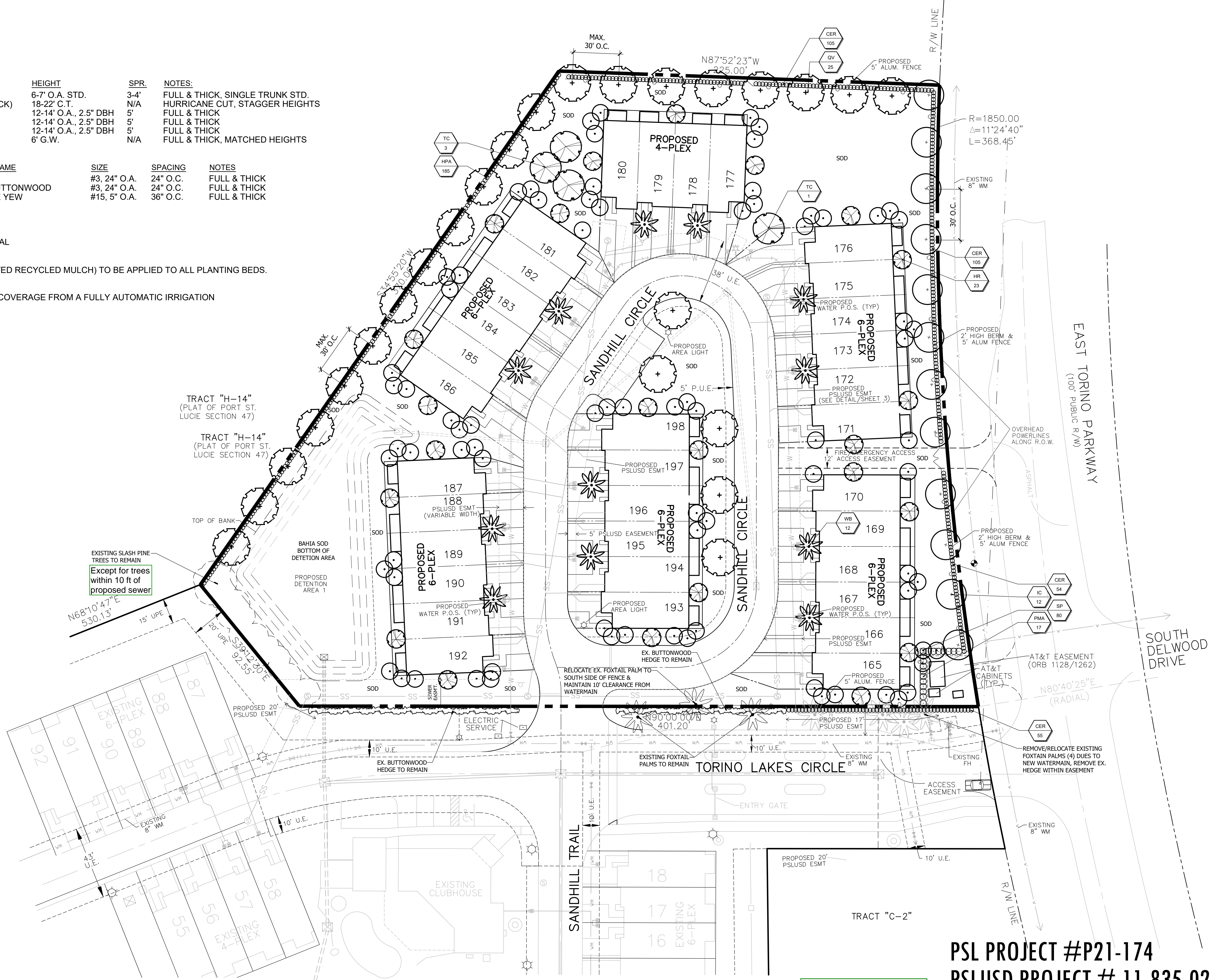
TREES REQUIRED:	2 TREES (ONE PER ISLAND)
TREES PROVIDED:	2 TREES
TOTAL TREES REQUIRED:	102 TREES
TOTAL TREES PROVIDED:	102 TREES

FLOWERING TREES REQUIRED: 20 TREES (20% OF REQUIRED TREES)  
FLOWERING TREES PROVIDED: 26 TREES

PERCENTAGE OF NATIVE TREES REQ'D.: 51 TREES (50% OF REQUIRED TREES)  
PERCENTAGE OF NATIVE TREES PROVIDED: 62 TREES (60.8%)

Utility/Landscape Notes

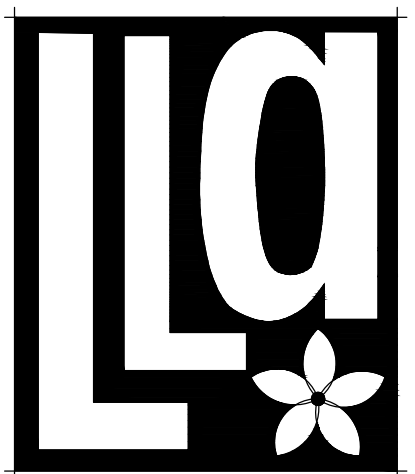
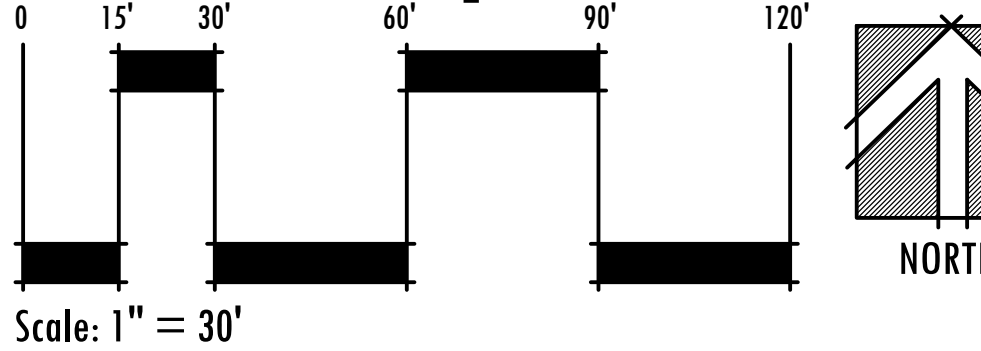
1. All landscaping within PSLUSD utility easements and within ten (10) feet of PSLUSD infrastructure shall comply with Chapter 154 of the City's Code of Ordinances and PSLUSD Utility Standards.
2. No landscaping shall be planted in such a manner as to adversely affect utility installation, operation, or maintenance.
3. No landscaping other than sod grasses may be planted within a 5' radius maintenance area of any PSLUSD appurtenance such as water meters, backflow devices, fire hydrants, sanitary sewer cleanouts, and manholes, air release valves, etc. Trees shall not be planted within ten (10) feet of any PSLUSD infrastructure. All measurements are from outside to outside, not centerline to centerline. Example: outside of pipe to nearest point on tree trunk.



REFER TO SHEET LP-3 FOR LANDSCAPE SPECIFICATIONS & PLANTING DETAILS

PSL PROJECT #P21-174  
PSLUSD PROJECT # 11-835-02

Landscape Plan



Litterick  
Landscape  
Architecture

2740 SW Martin Downs Blvd. #199  
Palm City, FL 34990  
561-719-3876  
JasonLA1677@yahoo.com

Project Name

Torino Lakes (Phase 4)

Port St. Lucie, Florida

Landscape Architect of Record



Jason M. Litterick, RLA  
(LA0001677)

Scale: 1" = 30'-0"

Designed:	JML
Drawn:	JML
Approved:	JML
Date:	8/20/21
Job no.	
Revisions:	9/9/21 10/13/22

Sheet No.

LP-1