






REVISIONS:

DATE: 06-28-2023
SCALE: AS NOTED
FILE: A. SLACK
JOB # 23-0106

SHEET

M.1

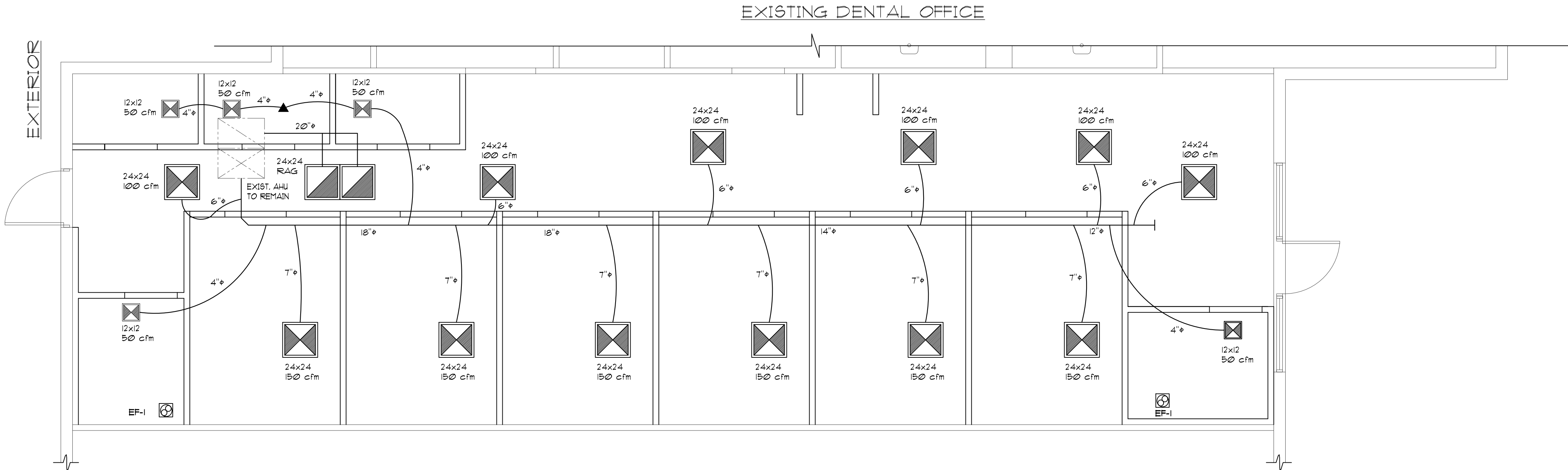
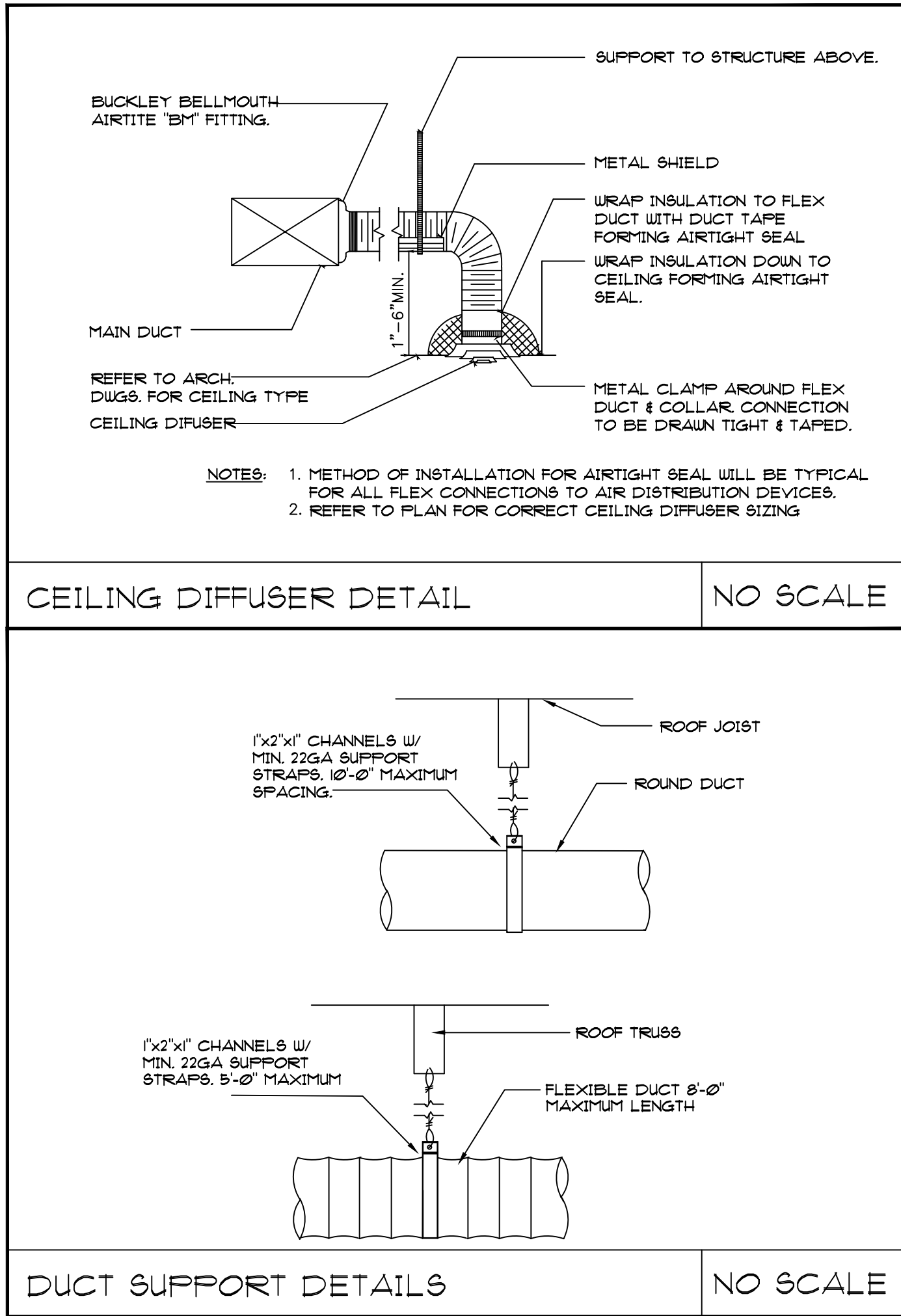
8 OF 10 SHEETS

LEGEND		NOTE: THIS IS A SCHEMATIC DRAWING, A/C CONTRACTOR TO PROVIDE SHOP DRAWINGS.	
	CEILING DIFFUSER. SEE DRAWING FOR DIMENSIONS, NECK SIZE, LOCATION AND DIRECTION(S) OF AIR FLOW.		
	EXHAUST FAN. SEE DRAWING FOR LOCATION AND EXHAUST LOCATION 50cfm TYPICAL UNLESS INDICATED DIFFERENTLY ON PLAN.		
	CEILING RETURN AIR GRILLE. SEE DRAWING FOR DIMENSIONS, NECK SIZE AND LOCATION.		
	CEILING AIR TRANSFER GRILLE. SEE DRAWING FOR DIMENSIONS, NECK SIZE AND LOCATION.		
	THERMOSTAT. SEE DRAWING FOR LOCATION.		
ABBREVIATIONS			
VTR	VENT TO ROOF	AHU	AIR HANDLING UNIT
VTW	VENT TO WALL	EXF	EXHAUST FAN
VTRJ	VENT TO ROOF JACK	CFM	CUBIC FEET PER MINUTE
SW	SIDE WALL GRILLE AT 6" BELOW CLG.	KW	KILOWATTS
CJ	CONDENSING UNIT	FLA	FULL LOAD AMP'S
T.A.	TRANSFER AIR GRILLE	RA	RETURN AIR GRILLE

AIR-CONDITIONING NOTES:	
Outside Air Calculations per 2020 Florida Building Code (table 403.3.1.1 section 403.3.1.1.1 Equation 4-1):	
$V_o = R_o P_z + R_o A_z$	
$V_o = 20 \times 24 + 0.12 \times 3649$	
$V_o = 480 + 438$	
$V_o = 918 / 2 RTU = 459 O.A. PER UNIT$	

EXHAUST FAN SCHEDULE									
MARK	AREA SERVED	TIP SPEED	CFM	T.S.P. IN WG	MAX. SONES	MOTOR DATA			REMARKS & NOTES
						HP	RPM	V/Ø/HZ	CONTROLLED BY
EF-1	TOILET ROOMS	-	100	50"	-	1/2	1/40	120/1/60	SWITCH AT TOILET RM

- NOTES: A/C CONTRACTOR TO FIELD VERIFY ALL NOTES BELOW AND REQUIREMENTS ARE PER CODE
- RPM'S INDICATED ARE APPROXIMATE. ADJUST FAN DRIVES TO ACHIEVE AIRFLOW SPECIFIED.
 - MAINTAIN A MINIMUM CLEARANCE OF 10'-0" FROM ALL INTAKE AIR FANS AND ALL ROOF TOP UNITS OUTSIDE AIR INTAKE OPENINGS.



AIR CONDITIONING PLAN
1/4" = 1'-0"

EXISTING AHU - 5 TON

MANUFACTURER	- TRANE
RTU	- TSC060G3
SEER	- 12 EER, 14 SEER
SENSIBLE	- 46,000 Btu/h
LATENT	- 10,700 Btu/h
TOTAL	- 56,700 Btu/h
KW	- 10
COPPER SIZE	- 3/4" x 3/8"
DRAIN SIZE	- 3/4" PVC

- AIR-CONDITIONING NOTES :
- All material shall be new and free from defects.
 - Ducts shall be R-6.0 insulated, fiberglass ductboard, and insulated flex, with standard duty full reinforced vapor barrier with manufacturer's logo printed on material. Tape and seal all joints. Support ducts with trapeze hangers 1" X 2" X 1" channels with minimum 1 1/2" wide X 22 gage support straps spaced per Table of this sheet.
 - New thermostats shall be Honeywell T8600C1162 or equal.
 - Furnish and install all material and labor for a complete installation.
 - Furnish and install Quieturn steel heavy density molded fiberglass turning vanes with steel side rails at all 90° duct turns.
 - Balancing dampers shall be Russkin MDRS25 at all branches.
 - Furnish and install filters at all units prior to start-up and prior to occupancy.
 - Balance all systems to tenant's comfort.
 - Maintain 10'0" between O.A.I., plumbing vents/exhausts and exterior door.
 - Clean all equipment at completion of work.
 - NOT USED
 - Verify voltage prior to construction.
 - Furnish all accessories for a complete installation.
 - Small supply diffusers shall be Titus TDC-AA surface mount border #1 with damper. 24" X 24" diffusers shall be Titus TDC-AA with lay-in borders. Diffusers shall be #26 finish. Return grilles shall be Titus 350FLF1 series (26 finish). Filter shall be at grille. OR EQUAL.
 - Equal substitutions are permitted.
 - FSP denotes full-size plenum.
 - Exhaust duct shall be sheet metal (26 gage minimum) to new roof jack.
 - New Rooftop A/C units shall be placed on existing rooftop curbs with curb adapters. Fasten units to existing curb per detail.
 - Not used.
 - Connect new 1 1/4" PVC condensate drains to existing condensate plumbing at building shell, which drains into storm sewer system per shell drawings.
 - Duct detectors shall be Air Products with RW Series audible/visual alarm and remote test station. Interlock duct detectors to each other to shut down both units in the event one unit is activated.