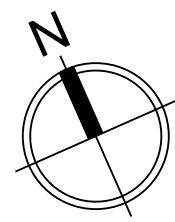
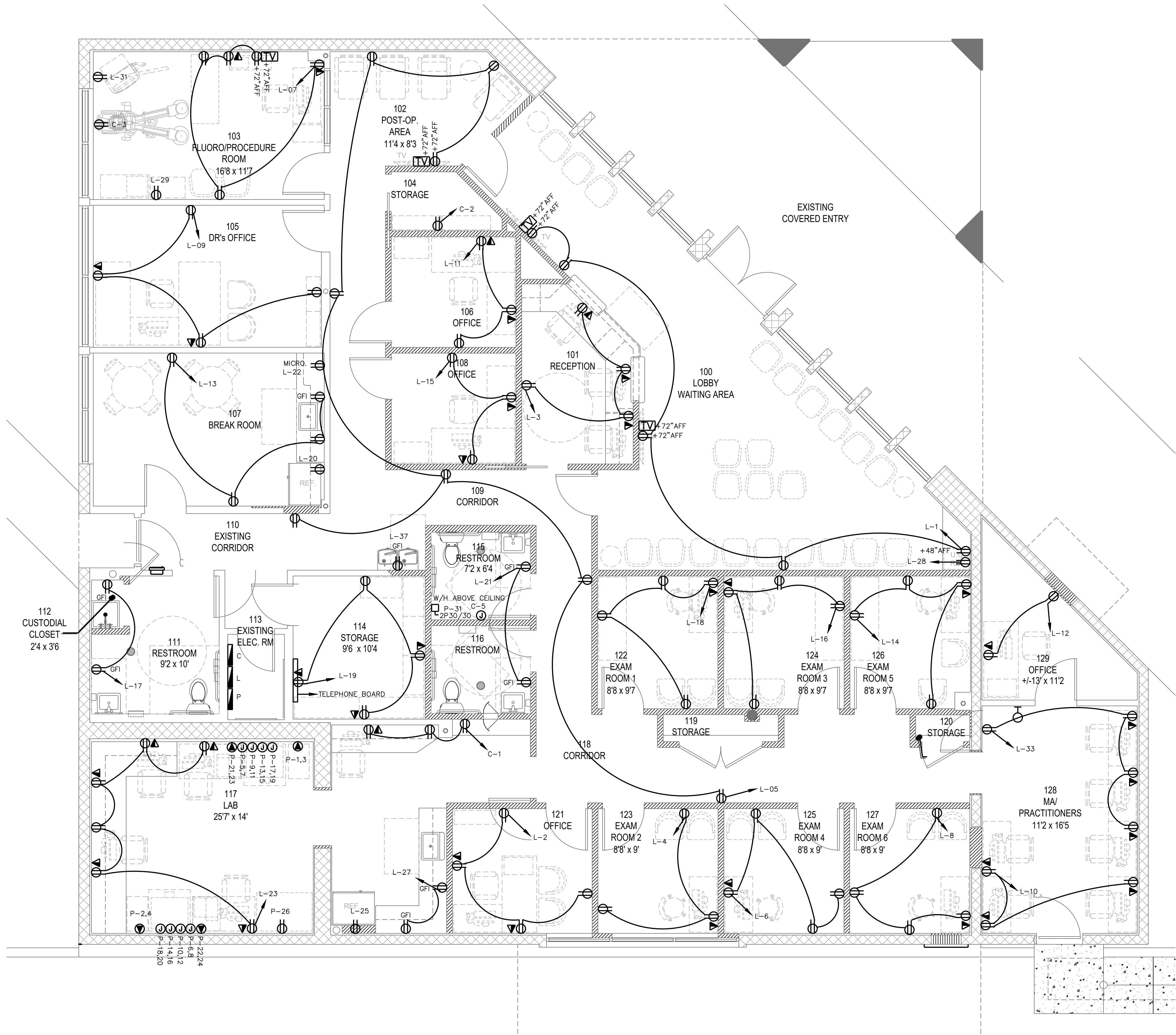


Loucks Engineering, Inc. All Rights Reserved © 2024, Printed 06.25.24 08:44 AM by LEI-100, Saved in E:\2024\2401-24100\2499 PSL Pain Clinic - Claren\Drawings on 06.24.24 09:02 AM by LEI-110



ELECTRICAL LEGEND	
	DISCONNECT
	SIMPLEX RECEPTACLE
	DUPLEX RECEPTACLE
	DUPLEX RECEPTACLE CEILING MOUNTED
	SWITCHED DUPLEX RECEPTACLE
	QUADRUPLEX RECEPTACLE
	SPECIAL RECEPTACLE
	JUNCTION BOX
	FLOOR DUPLEX RECEPTACLE
	FLOOR QUADRUPLEX RECEPTACLE
	POWER POLE
	TELEPHONE JACK
	DATA JACK
	TELEPHONE/DATA JACK
	FLOOR TELEPHONE/DATA JACK
	FLOOR TELEPHONE JACK
	FLOOR DATA JACK
	TV CABLE OUTLET
	SMOKE DETECTOR/CARBON MONOXIDE SENSOR UL LISTED COMBO
	SMOKE DETECTOR
	MULTI-CANDELA FIRE STROBE
	MULTI-CANDELA SPEAKER/STROBE
	PULL STATION
	ELECTRICAL PANEL
	GROUND FAULT INTERRUPT
	NIGHT LIGHT ON 24/7
	NEW
	EXISTING
	EXISTING RELOCATED
	TIME SWITCH CONTROL
	WEATHER PROOF
	LIGHT WITH EM BALLAST OR INVERTER
	1200 LUMENS MIN.

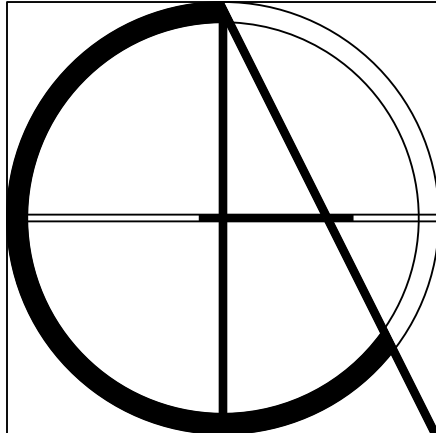
SOME SYMBOLS MAY NOT BE USED.

ALL PATIENT CARE AREAS TO BE WIRED ACCORDING TO NEC ARTICLE 517

MEDICAL FACILITIES:  
ALL RECEPTACLES IN OFFICES, CORRIDORS AND WAITING ROOMS TO BE TAMPER RESISTANT NEC 406.12

CONFIRM ALL ELECTRICAL REQUIREMENTS AND EQUIPMENT LOCATIONS WITH OWNER PRIOR TO ROUGH-IN

**LOUCKS<sup>1</sup>**  
**ENGINEERING<sup>C</sup>**  
mep consulting engineers  
E. PILHUJ P.E. FL REG 49832  
G. INOA ALVAREZ P.E. FL REG 74056  
321 E Commercial Blvd  
Fort Lauderdale FL 33334  
954-938-1881 Est. 1966



Claren Architecture + Design, Inc.

AA26002865

6400 CONGRESS AVE, SUITE 2150

BOCA RATON, FL 33487

561.961.4884

www.clarenarchitecture.com

Tenant Improvements for:

**PSL Pain Clinic**

2300 SE Veterans Memorial Pkwy

Port St. Lucie, Florida 34952

SEAL

PROJECT #	24-018
DATE	6-21-2024
REV #	DATE
△	
△	
△	
△	
△	
△	
SHEET #	

Loucks Engineering, Inc. All Rights Reserved © 2024, Printed 06.25.24 08:44 AM by LEI-100, Saved in E:\2024\2401-24100\2499 PSL Pain Clinic - Claren\Drawings on 06.21.24 03:48 PM by LEI-150



PSL PAIN CLINIC											
LIGHTING FIXTURE SCHEDULE											
TYPE	DESCRIPTION	MANUFACTURER	CATALOG NUMBER	VOLT	LAMP COLOR	LUMENS	LAMP TYPE	DIM TYPE	WATTS	MOUNTING	NOTES
A	2X2 LED TROFFER	METALUX	22CZ-32-UNV-L840-CD1-U	UNV	4000K	2706	LED	0-10V	26.7W	RECESSED	
AE	2X2 LED TROFFER W/ BATTERY PACK	METALUX	22CZ-32-UNV-EL7W-L840-CD1-U	UNV	4000K	2706	LED	0-10V	26.7W	RECESSED	
B	2X2 LED PANEL	METALUX	22CGT3540C	UNV	4000K	3582	LED	0-10V	31.4W	SURFACE	
BE	2X2 LED PANEL W/ BATTERY PACK	METALUX	22CGT3540C-EL7W	UNV	4000K	3582	LED	0-10V	31.4W	SURFACE	
C	2X4 LED TROFFER	METALUX	24CZ2-90VHE-UNV-L840-CD1-U	UNV	4000K	7733	LED	0-10V	61.8W	RECESSED	
CE	2X4 LED TROFFER W/ BATTERY PACK	METALUX	24CZ2-90VHE-UNV-EL7W-L840-CD1-U	UNV	4000K	7733	LED	0-10V	61.8W	RECESSED	
D	4" LED DOWNLIGHT (SLOPED CEILING)	HALO COMM	HC430D010-HM43040840-41MDW	UNV	4000K	3029	LED	0-10V	28W	RECESSED	NOTE 1
DE	4" LED DOWNLIGHT (SLOPED CEILING) W/ BATTERY PACK	HALO COMM	HC420D010EM7-HM43040840-41MDW	UNV	4000K	3029	LED	0-10V	28W	RECESSED	NOTE 1
X	EXT SIGN	SURE-LITES	SCX70G	UNV	GREEN	N/A	LED	N/A	3W	RECESSED	
FIXTURE SCHEDULE NOTES											
NOTE 1: WITH SLOPED CEILING ADAPTOR #HSA430											
FOR QUESTIONS PERTAINING TO THIS FIXTURE SCHEDULE PLEASE CONTACT QUOTATIONS@LIGHTINGDYNAMICS.COM, (854) 944-0286											

CONTROLS LEGEND

SYMBOL	MODEL/DESCRIPTION
	LLEVO-TC 4 RELAY CONTROL PANEL TIMECLOCK
	R200 120/277VAC REMOTE DIMMING RELAY
	LSG3-WH-1-MZD LS-G3 SWITCH DIMMING STATION
	LSG3-WH-4-MZD LS-G3 SWITCH DIMMING STATION
	ILC-SWX-222-1 360° 2000FT² LOW VOLTAGE DT CEILING SENSOR
	ILC-SWX-121-WH 120/277VAC SINGLE RELAY DT WALL SWITCH SENSOR
	ILC-SWX-121-D-WH 120/277VAC SINGLE RELAY DT WALL SWITCH SENSOR
	ILC-SWX-803-WH MOMENTARY DECORATOR DIMMER SWITCH, 0-10V, WHITE
	ILC-SWX-900-AX 120/277VAC SINGLE RELAY 16A POWER PACK AUXILIARY SWITCH INPUT
	LINE VOLTAGE SWITCH (BY OTHERS)
COLOR KEY	
	WAVELUX WIRE
	CAT-5 R200 CABLE
	CAT-5 LOCAL CABLE
	18/3" SENSOR CABLE
	DAYLIGHT ZONE

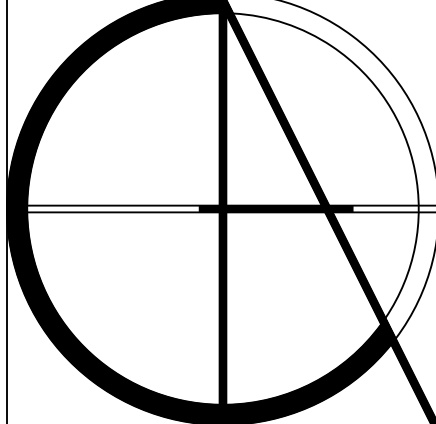
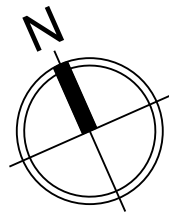
ELECTRICAL LEGEND

	1x4 LED LIGHT
	1x4 LED LIGHT W/ EMERGENCY BALLAST (1200 LUMENS MIN.) ON 24/7
	2x2 LED LIGHT
	2x2 LED LIGHT W/ EMERGENCY BALLAST (1200 LUMENS MIN.) ON 24/7
	2x4 LED LIGHT
	2x4 LED LIGHT W/ EMERGENCY BALLAST (1200 LUMENS MIN.) ON 24/7
	RECESSED LIGHT
	SURFACE MOUNTED LIGHT
	EXTERIOR WALL LIGHT
	INTERIOR WALL SCONCE
	EXIT SIGN WITH 90 MIN BATTERY BACK UP
	EXIT SIGN WITH DIRECTIONAL ARROW WITH 90 MIN BATTERY BACK UP
	WALL MOUNTED EMERGENCY LIGHT WITH 90 MIN BATTERY BACK UP
	EXIT SIGN/EMERGENCY LIGHT COMBO WITH 90 MIN BATTERY BACK UP
	SWITCH WITH OCCUPANCY SENSOR THAT SHALL TURN LIGHTING OFF WITHIN 20 MINUTES OF AN OCCUPANT LEAVING A SPACE
	3 WAY SWITCH WITH OCCUPANCY SENSOR THAT SHALL TURN LIGHTING OFF WITHIN 20 MINUTES OF AN OCCUPANT LEAVING A SPACE
	DIMMER SWITCH WITH OCCUPANCY SENSOR THAT SHALL TURN LIGHTING OFF WITHIN 20 MINUTES OF AN OCCUPANT LEAVING A SPACE
	2 HOUR OVERRIDE SWITCH TO TIME CLOCK
	MOTION SENSOR THAT SHALL TURN LIGHTING OFF WITHIN 20 MINUTES OF AN OCCUPANT LEAVING A SPACE
	EXHAUST FAN MOTOR
	EXHAUST FAN
	NIGHT LIGHT ON 24/7
	NEW
	EXISTING
	EXISTING RELOCATED
	TIME SWITCH CONTROL
	WEATHER PROOF
	LIGHT WITH EM BALLAST OR INVERTER 1200 LUMENS MIN.

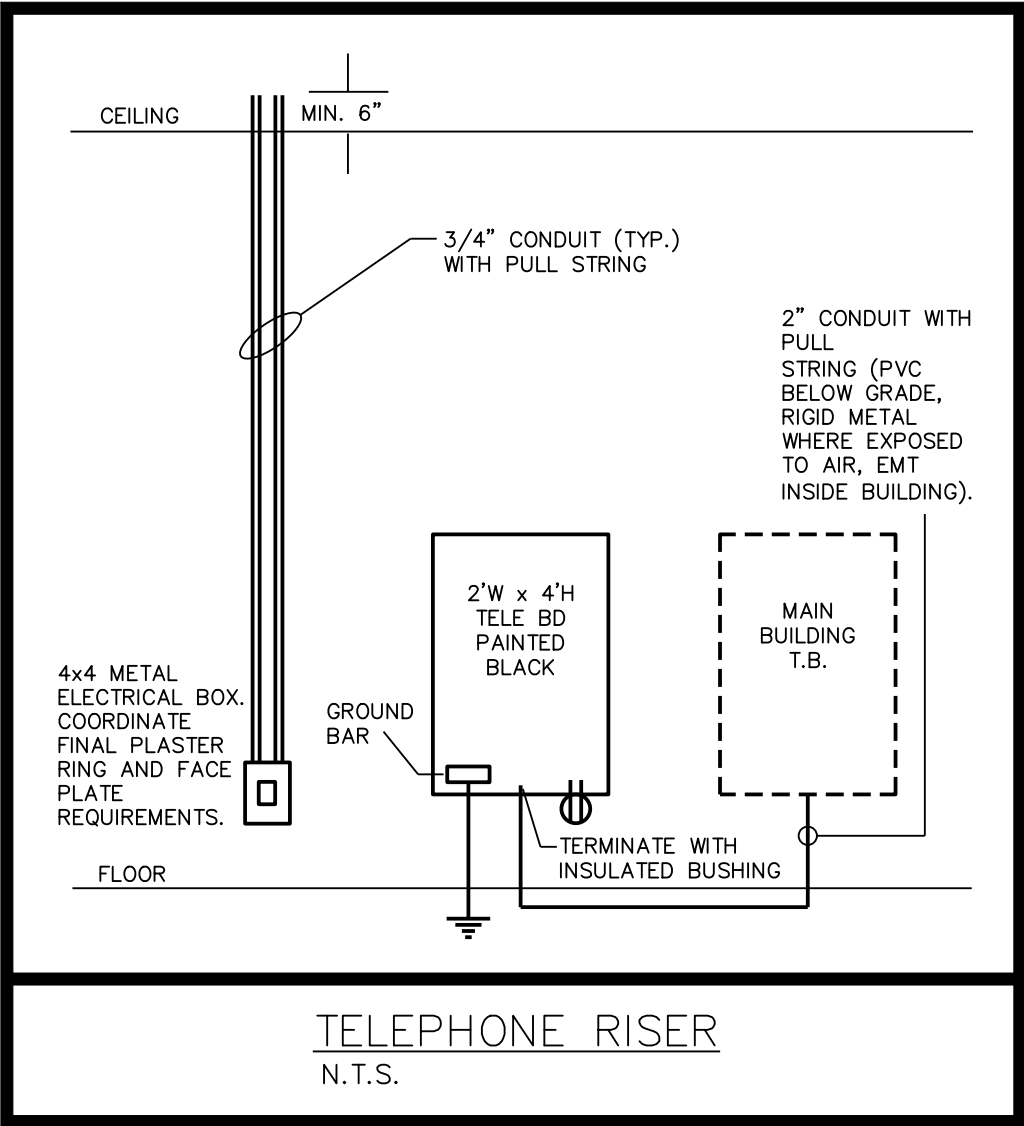
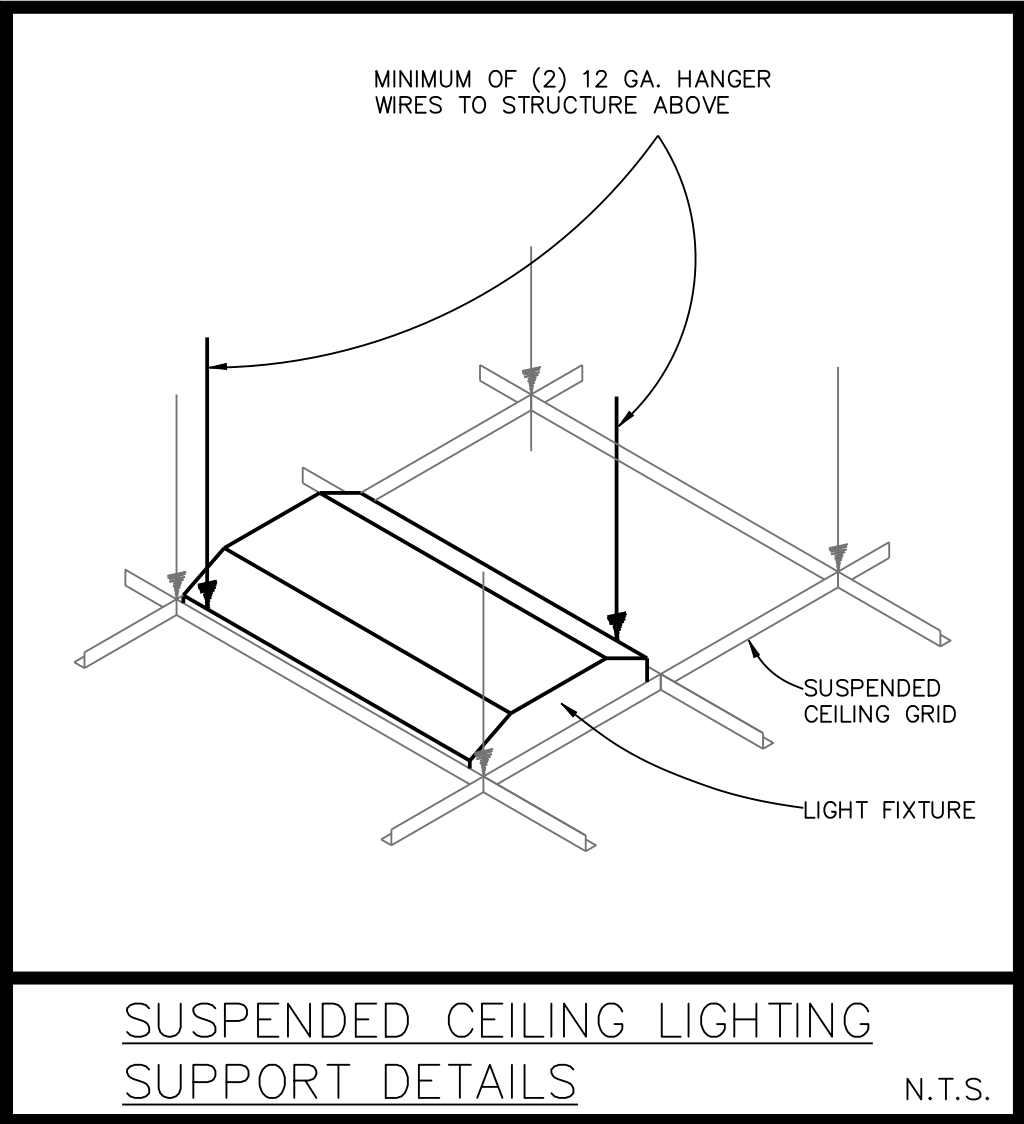
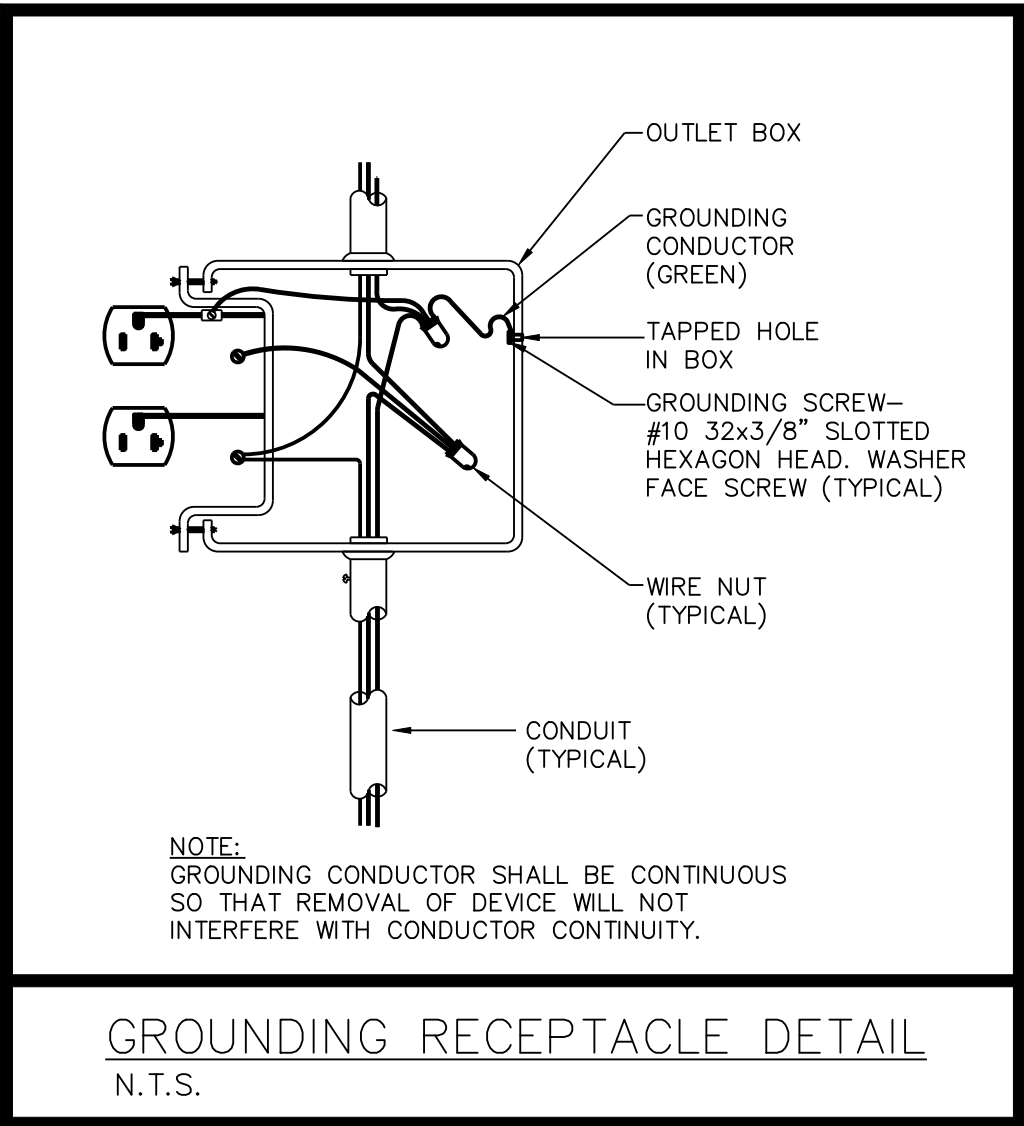
SOME SYMBOLS MAY NOT BE USED.

ALL PATIENT CARE AREAS TO  
BE WIRED ACCORDING TO NEC  
ARTICLE 517

EMERGENCY LIGHTS TO BE SWITCHABLE. NL AND EXIT SIGNS TO BE WIRED AHEAD OF ANY CONTROL.







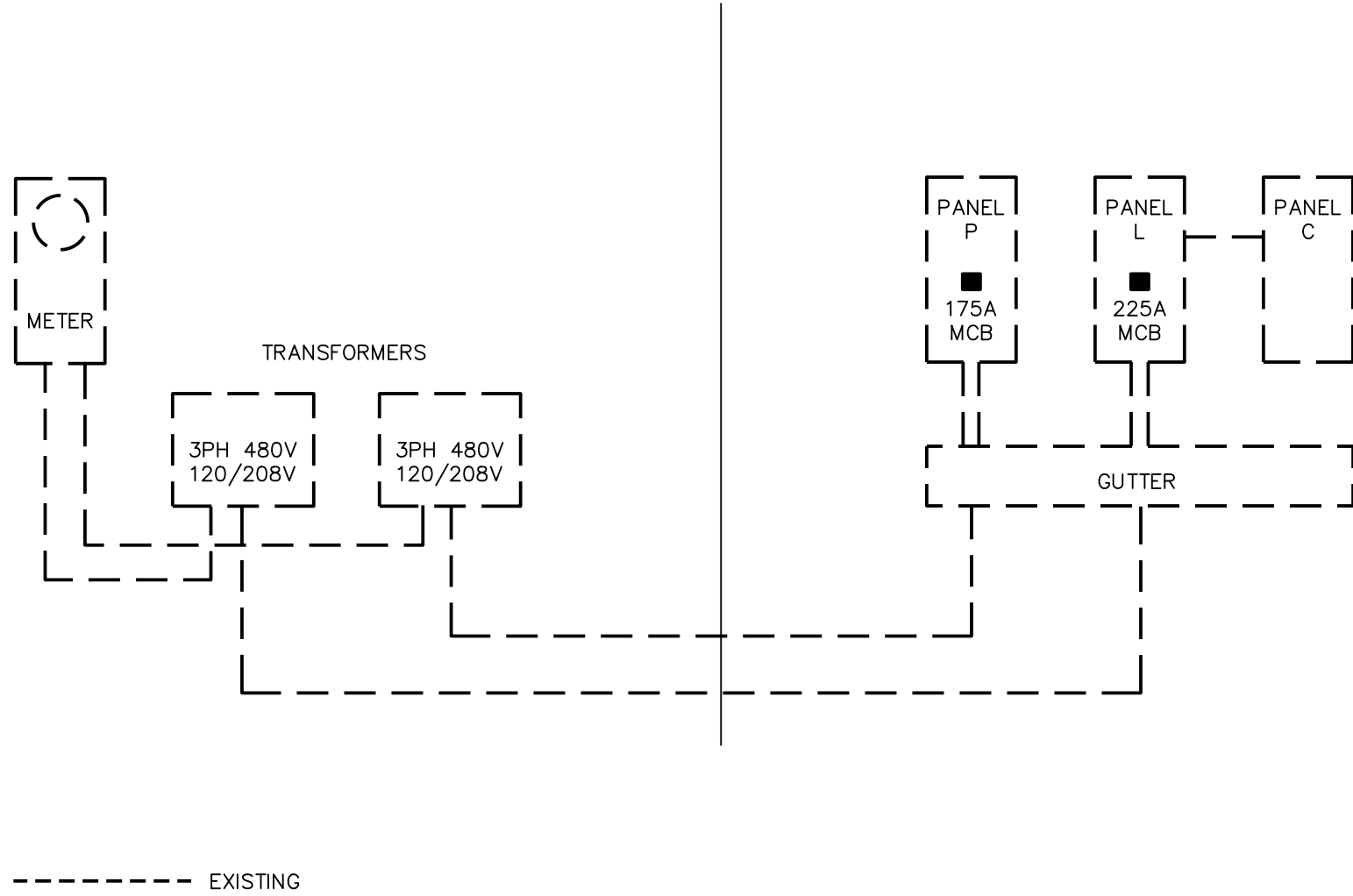
PANEL P175A MCB3ø4W 120/208V 22K AIC									
Wire	Ø	No.	Poles	Trip	Description	Load	No.	Poles	Trip
10	A	01	2	30	UPS-4500 SYS.	6000	02	2	30
10	B	03	-	-	ACCESSORIES	-	04	-	-
8	C	05	2	40	AC CONTROL	400	06	2	40
8	A	07	-	-	AC PUMP	150	10	2	50
8	B	09	2	50	AC PUMP	150	12	-	-
8	C	11	-	-	AC SAMPLER	300	14	2	50
4	A	13	2	50	AC SAMPLER	300	16	-	-
4	B	15	-	-	AC OVEN	600	18	2	70
8	C	17	2	70	AC OVEN	600	20	-	-
8	A	19	-	-	NITROGEN GEN	1600	22	2	20
12	B	21	2	20	NITROGEN GEN	1600	24	-	-
12	C	23	-	-	A/C	14000	26	1	20
E	A	25	3	50	A/C	14000	28	-	-
E	B	27	-	-	HOOD	1200	30	-	-
E	C	29	-	-	W/H	4500	32	3	60
E	A	31	2	30	W/H	4500	34	-	-
E	B	33	-	-	-	-	36	-	-
C	35	-	-	-	-	-	38	-	-
A	37	-	-	-	-	-	40	-	-
B	39	-	-	-	-	-	42	-	-
C	41	-	-	-	-	-	-	-	-
PANEL LOAD						55800W	155A		

PANEL L225A MCB1ø3W 120/208V 22K AIC									
Wire	Ø	No.	Poles	Trip	Description	Load	No.	Poles	Trip
12	A	01	1	20	LOBBY RECEPTS	900	02	1	20
12	C	03	1	20	RECEPTION RECEPTS	720	04	1	20
12	A	05	1	20	POST OP/CORRIDOR	1260	06	1	20
12	C	07	1	20	PROCEDURE RM RECEPTS	900	08	1	20
12	A	09	1	20	DR OFFICE RECEPTS	720	10	1	20
12	C	11	1	20	OFFICE 106 RECEPTS	540	12	1	20
12	A	13	1	20	BREAK RM	540	14	1	20
12	C	15	1	20	OFFICE 108 RECEPTS	540	16	1	20
12	A	17	1	20	111 REST RM RECEPTS	360	18	1	20
12	C	19	1	20	ELEC/STIRG 114	720	20	1	20
12	A	21	1	20	RESTROOM RECEPTS	360	22	1	20
12	C	23	1	20	LAB RECEPTS	1080	24	2	50
12	A	25	1	20	LAB REF.	500	26	-	-
12	C	27	1	20	LAB GFIS	360	28	1	20
12	A	29	1	20	VALUEKLAVE	1400	30	-	-
12	C	31	1	20	X-RAY	1500	32	-	-
12	A	33	1	20	MA/PRACT RECEPTS 2	720	34	-	-
12	C	35	1	20	FOUNT GFI	180	36	-	-
A	37	-	-	-	-	-	38	-	-
C	39	-	-	-	-	-	40	-	-
A	41	-	-	-	-	-	42	-	-
PANEL LOAD						26820W	129A		

PANEL C125A MLO1ø3W 120/208V 22K AIC									
Wire	Ø	No.	Poles	Trip	Description	Load	No.	Poles	Trip
12	A	01	1	20	LAB CORRIDOR RECEPTS	540	02	1	20
12	B	03	1	20	FLOURO EQUIP.	1000	04	-	-
12	C	05	1	20	RECIRC	300	06	1	20
12	A	07	1	20	EXT LTS	1200	08	1	20
12	B	09	1	20	CORRIDOR LTS	600	10	-	-
-	C	11	-	-	-	-	12	-	-
A	13	-	-	-	-	-	14	-	-
B	15	-	-	-	-	-	16	-	-
C	17	-	-	-	-	-	18	-	-
A	19	-	-	-	-	-	20	-	-
B	21	-	-	-	-	-	22	-	-
C	23	-	-	-	-	-	24	-	-
A	25	-	-	-	-	-	26	-	-
B	27	-	-	-	-	-	28	-	-
C	29	-	-	-	-	-	30	-	-
PANEL LOAD						7020W	34A		

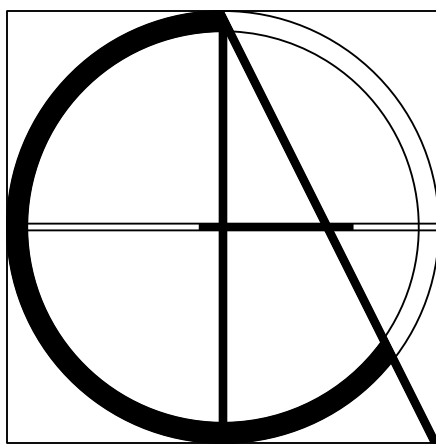
#### ELECTRICAL NOTES:

- ALL WORK TO BE DONE ACCORDING TO 2023 F.B.C., 2016 NFPA-72, 2018 NFPA-101, 2018 NFPA-1, 2023 NFPA-70, 2020 N.E.C.
- CONTRACTOR TO VISIT SITE AND VERIFY EXISTING CONDITIONS PRIOR TO SUBMITTING BIDS. NOTIFY ENGINEER OF ANY DISCREPANCIES AT ONCE. FAILURE TO DO SO AND CONTRACTOR PROCEEDS AT HIS OWN RISK.
- MAINTAIN AS-BUILTS ON A DAILY BASIS. SUBMIT 3 COPIES TO ARCHITECT AND OWNER 3 DAYS PRIOR TO ANY REQUIRED INSPECTIONS.
- ALL CONDUIT TO BE METAL EMT INSIDE AND RIGID ON THE EXTERIOR. P.V.C. WILL BE ACCEPTED PROVIDED THAT THE CORRECT GROUND AS PER N.E.C. TABLE 250-66,122 IS INCLUDED WHEN ALLOWED BY CODE. NO PVC WILL BE ALLOWED IN R.A. PLENUMS OR FIRE RATED ASSEMBLIES. ALL MATERIALS IN R.A. PLENUMS TO BE PLENUM RATED.
- CONDUCTOR TO BE COPPER THWN OR THHN. MORE THAN THREE CURRENT CARRYING CONDUCTORS IN A CONDUIT TO BE INSTALLED PER NEC 310.15(B)(3)(A)
- ALL EXTERIOR EQUIPMENT TO NEMA 3R RATED.
- ALL FUSES TO BE BUSSMAN CURRENT LIMITING AT SERVICE ENTRANCE. ALL OTHERS FUSES ACCORDING TO MANU. SPECIF.
- PROVIDE 6 SETS OF SHOP DRAWINGS FOR APPROVAL. NO EQUIPMENT TO BE ORDERED BEFORE SHOP DRAWINGS ARE APPROVED.
- VERIFY ALL NAMEPLATE DATA OF EQUIPMENT FOR PROPER PROTECTION AND LOADS PRIOR TO INSTALL OR WIRING.
- MAINTAIN A MINIMUM OF 36" IN FRONT OF ALL ELECTRICAL EQUIPMENT. PRIOR TO INSTALLING ANY EQUIPMENT COORDINATE WITH OTHER TRADES TO INSURE THAT CLEARANCES ARE MAINTAINED.
- CONTRACTOR TO REMOVE ALL TRASH/UNUSED MATERIALS AT THE END OF DAY.
- ALL CONDUITS, FIXTURES, DEVICES TO HAVE GROUND EXTEND AS PER TABLE 250-122 N.E.C.
- POWER TO BE ON CONTINUOUSLY 5 WEEK PRIOR TO COMPLETING PROJECT.
- ALL LOW VOLTAGE CABLING AND SYSTEM ARE THE RESPONSIBILITY OF THE VENDOR THAT IS PROVIDING THE SYSTEM INCLUDING PERMITTING.
- CONTRACTOR TO LAMP/RELAMP ALL FIXTURES.
- CONTRACTOR TO VERIFY QUANTITIES OF EXISTING AND NEW DEVICES AND FIXTURES REQUIRED TO COMPLETE PROJECT PRIOR TO SUBMITTING BID.
- CONTRACTOR TO VERIFY EXISTING CIRCUITS AND MUST PROVIDE NEW PANEL SCHEDULES IDENTIFYING ALL CIRCUITS IN PANEL.
- NEUTRALS NOT TO BE SHARED. PROVIDE #8 NEUTRAL TO ALL FURNITURE SYSTEMS, IF APPLICABLE.
- ELECTRICAL CONTRACTOR TO PROVIDE AND INSTALL ALL EQUIPMENT MENTIONED OR NOT TO POWER, DATA AND VOICE TO ALL EQUIPMENT AND SYSTEMS INSTALLED.
- ALL DEVICES TO MATCH BUILDING STANDARD OR BE DECORA SERIES.
- TYPICAL LIGHT SWITCHES TO BE ø 48" A.F.F. ON CENTER. TYPICAL RECEPTACLE TO BE 18" A.F.F. ON CENTER. ALL SWITCHES TO BE GANGED WITH CONTINUOUS FACEPLATES. ALL DEVICES THAT ARE ADJACENT TO BE SPACED 6" ON CENTER.
- ALL ELECTRICAL ELEMENTS TO BE THOROUGHLY PROTECTED FROM DAMAGE AFTER INSTALLATION AND SHALL HAVE TRIM INSTALLED AFTER ADJOINING FINISH MATERIALS ARE INSTALLED.
- AT THE COMPLETION OF THE PROJECT ALL EQUIPMENT, DEVICES AND FIXTURES TO BE CLEANED.
- ALL EMERGENCY AND EXIT LIGHTS ARE TO HAVE A MINIMUM 90 MINUTE BATTERY BACK-UP.
- CONTRACTOR IS TO PROVIDE STEP DOWN TRANSFORMERS FOR ALL FANS WHEN REQUIRED.
- NO ALUMINUM CONDUCTOR BUSS WILL BE ALLOWED - ALL MUST BE COPPER.
- ALL DATA, TEL., TV BOXES TO BE 4x4x2 DOUBLE GANG BOXES. STUB ALL CONDUITS WITH LAY IN CEILINGS TO 6" ABOVE CEILING. ALL CONCEALED OR EXPOSED APPLICATIONS TO BE HOME RUN TO MAIN DISTRIBUTION LOCATION.
- CONTRACTOR TO PROVIDE TEMPORARY POWER FOR ALL TRADES.
- NEW ELECTRICAL PANELS TO HAVE BOLT ON BREAKERS.
- NO ELECTRICAL CIRCUITS OR WIRING FROM ADJACENT SPACES TO BE USED IN THIS PROJECT.
- ALL INTERIOR LIGHTING TO HAVE SWITCHES WITH OCCUPANCY SENSORS IN THEM CAPABLE OF STAYING ON NO MORE THAN 30 MINUTES. CIRCUITS WHICH HAVE MOTION SENSORS ON THEM MAY USE STANDARD SWITCHES.
- CONTRACTOR TO REMOVE ALL ABANDONED OR UNUSED WIRING, CONDUIT AND BOXES.
- PROVIDE 2-2" RIGID CONDUIT FROM BUILDINGS MAIN TELEPHONE ROOM COMMUNICATION CENTER TO SITE DEMARC POINT. COORDINATE CABLE, TV, VOICE AND DATA REQUIREMENTS WITH OWNER TO MEET THEIR REQUIREMENTS.
- VERIFY EXISTING FIRE ALARM HAS SUFFICIENT ROOM FOR EXPANSION AND EQUIPMENT IS STILL READILY AVAILABLE. CONTRACTOR TO PROVIDE COMPLETE SHOP DWGS INCLUDING RISER, CUT SHEETS, BATTERY CALCULATIONS AND ALL OTHER NECESSARY INFORMATION.
- LABEL ALL OUTLETS AND JUNCTION BOXES WITH PANEL AND CIRCUIT NUMBER.
- ANY ELECTRICAL EQUIPMENT POTENTIALLY NEEDING ADJUSTMENT, SERVICING, OR MAINTENANCE WHILE ENERGIZED MUST BE PLACED IN ACCORDANCE WITH N.E.C. 110.16.
- ALL NIGHT LIGHTS AND EMERGENCY LIGHTS TO BE CONNECTED AHEAD OF ANY CONTROL DEVICE.
- ALL TRANSFORMERS ARE TO HAVE A MINIMUM K-RATING OF K-13. KVA SIZING OF TRANSFORMER IS SHOWN ON THE ELECTRICAL RISER DRAWING.
- ALL CIRCUIT BREAKERS SERVING FURNITURE SYSTEMS MUST BE HANDLE TIED AS PER N.E.C. 605.7
- PROVIDE MEAN OF DISCONNECTION FOR ALL LIGHTING FIXTURES AS PER NEC 410.130(G)
- ANY BREAKER THAT CONTROLS ANY EXIT SIGN AND/OR EMERGENCY LIGHT SHALL BE IDENTIFIED.



#### 01ELECTRICAL RISER, DETAILS & NOTES

SCALE: NTS



Claren Architecture + Design, Inc.

AA26002865

6400 CONGRESS AVE, SUITE 2150

BOCA RATON, FL 33487

561.961.4884

www.clarenarchitecture.com

Tenant Improvements for:

PSL Pain Clinic

2300 SE Veterans Memorial Pkwy

Port St. Lucie, Florida 34952

SEAL

PROJECT #	24-018
DATE	6-21-2024
REV #	DATE
△	
△	
△	
△	
△	
△	
SHEET #	

E3

COPYRIGHT 2024

**LOUCKS<sup>1</sup>**  
**ENGINEERING<sup>C</sup>**  
mep consulting engineers  
E. PILHUJ P.E. FL REG 49832  
G. INOA ALVAREZ P.E. FL REG 74056  
321 E Commercial Blvd  
Fort Lauderdale FL 33334  
EB-0033839 954-938-1881 Est. 1966