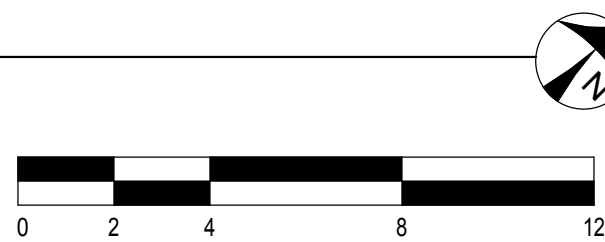


1 - PLUMBING FIRST FLOOR PLAN
SCALE: 1/4" = 1'-0"



- PLAN NOTES
- 0.75" DCW UP TO ROOF HYDRANT. PROVIDE VERTICAL VALVED DRAINAGE STUB ON RISER.
 - PROVIDE ELBOW DOWN ABOVE CEILING AND NO FITTINGS ON STRAIGHT PIPE TO ALLOW 3' DOWNSPOUT TO FIT IN 3-5/8" WALL.

This document is the product and property of Baker Model Donnelly Preston, Inc. Neither the document nor the information it contains may be copied or used for other than the specific project for which it was prepared without the written consent of Baker Model Donnelly Preston, Inc.



P: 937-234-0861 www.heapy.com
PROJECT NO. 2023-07201

Project Manager
MJM
Drawn
ALO
Checked
DJT
Initial Drawing Date
04.01.2024
Project Number
FIF21.94

P101

FIFTH THIRD BANK - BECKER ROAD BRANCH NEW
CONSTRUCTION
SE BECKER RD
PORT LUDIE, FL 34984
FIRST FLOOR PLAN

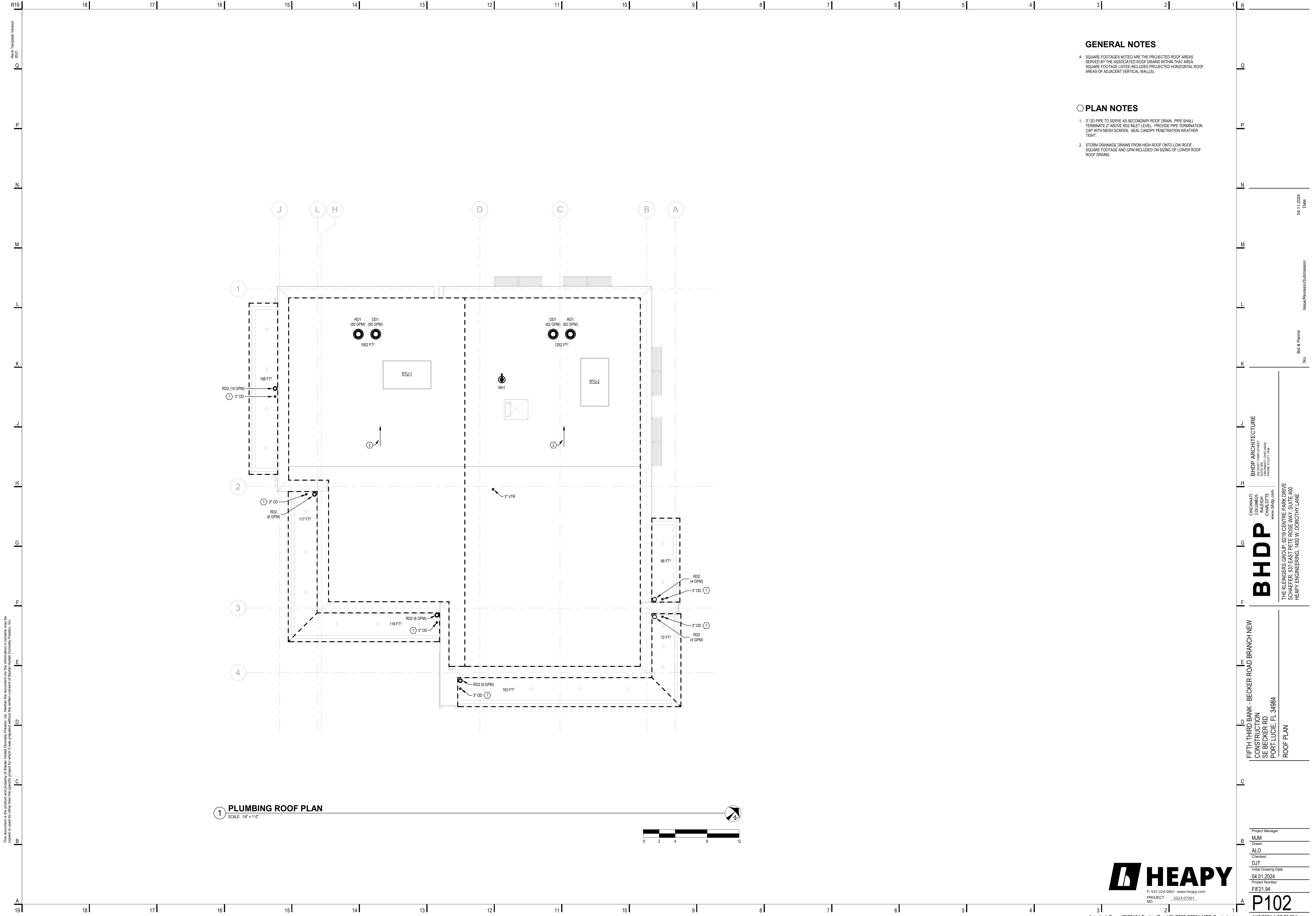
BHDP

BHDP ARCHITECTURE
100 N. THIRD STREET
SUITE 200
CHARLOTTE, NC 28202
PHONE 813.377.1534
www.bhdp.com

THE KLEINGERS GROUP, 6219 CENTRE PARK DRIVE
SCHAEFER, 537 EAST PETE ROSE WAY, SUITE 400
HEAPY ENGINEERING, 1400 W. DOROTHY LANE

No. Bldg & Permit Issue/Revision/Submission Date

04.11.2024



This document is the product and property of Baker Model Donnelly Preston, Inc. Neither the document nor the information it contains may be copied or used for other than the specific project for which it was prepared without the written consent of Baker Model Donnelly Preston, Inc.

GENERAL NOTES

A SQUARE FOOTAGES NOTED ARE THE PROJECTED ROOF AREAS SERVED BY THE ASSOCIATED ROOF DRAINS WITHIN THAT AREA. SQUARE FOOTAGE LISTED INCLUDES PROJECTED HORIZONTAL ROOF AREAS OF ADJACENT VERTICAL WALL(S).

PLAN NOTES

- 3" OD PIPE TO SERVE AS SECONDARY ROOF DRAIN. PIPE SHALL TERMINATE 2" ABOVE RD2 INLET LEVEL. PROVIDE PIPE TERMINATION CAP WITH MESH SCREEN. SEAL CANOPY PENETRATION WEATHER TIGHT.
- STORM DRAINAGE DRAINS FROM HIGH ROOF ONTO LOW ROOF. SQUARE FOOTAGE AND GPM INCLUDED ON SIGNS OF LOWER ROOF ROOF DRAINS.

BHDP ARCHITECTURE
1817 THIRD STREET
SUITE 202
CHARLOTTE, NC 28203
PHONE 813.377.1634

COLUMBI
COLUMBI
CHARLOTTE
www.bhdp.com

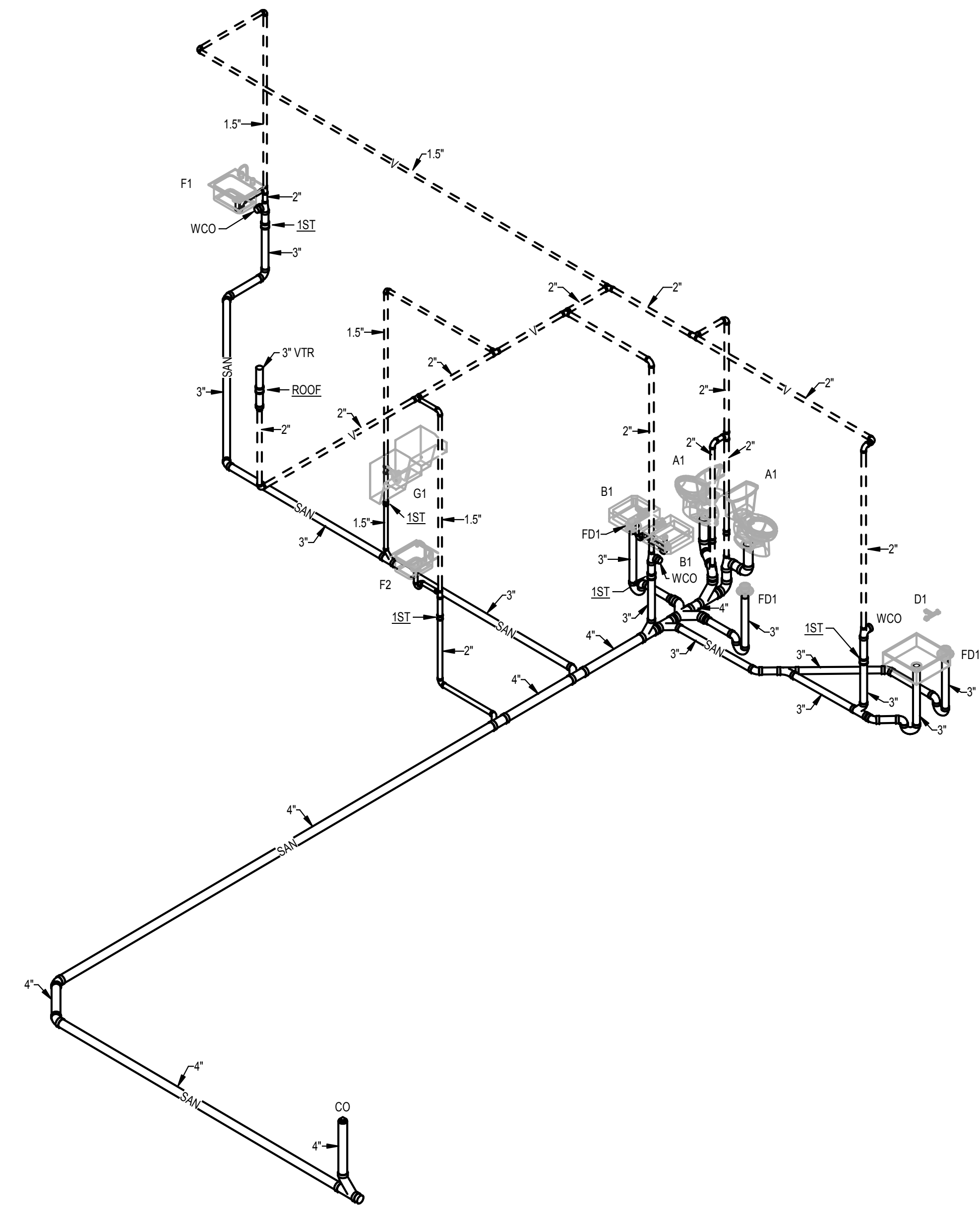
FIFTH THIRD BANK - BECKER ROAD BRANCH NEW
CONSTRUCTION
SE BECKER RD
PORT LUDIE, FL 34984
ROOF PLAN

Project Manager
MJM
Drawn
ALO
Checked
DJT
Initial Drawing Date
04.01.2024
Project Number
FIF21.94

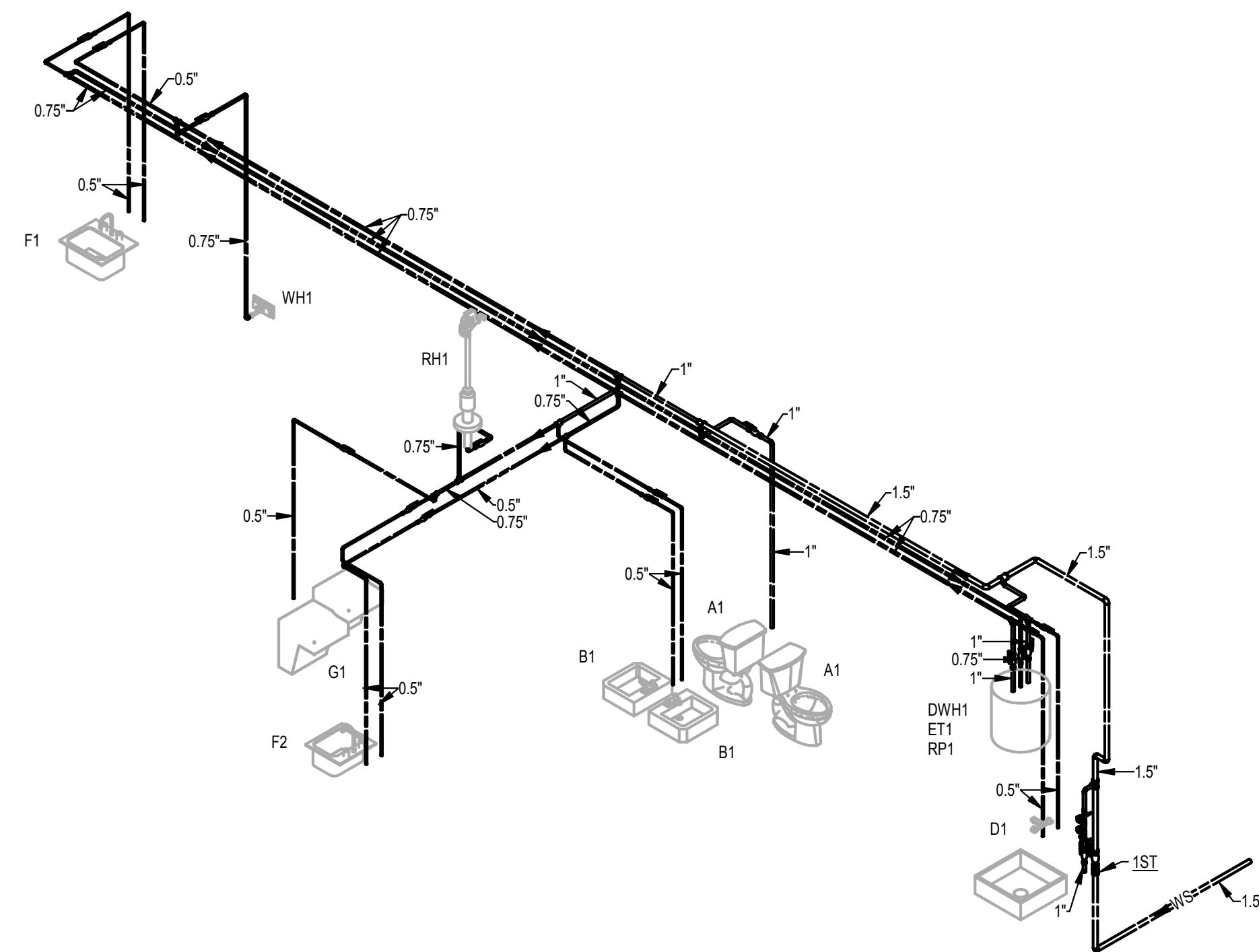


P: 937-234-0861 www.heapy.com
PROJECT NO. 2023-07201

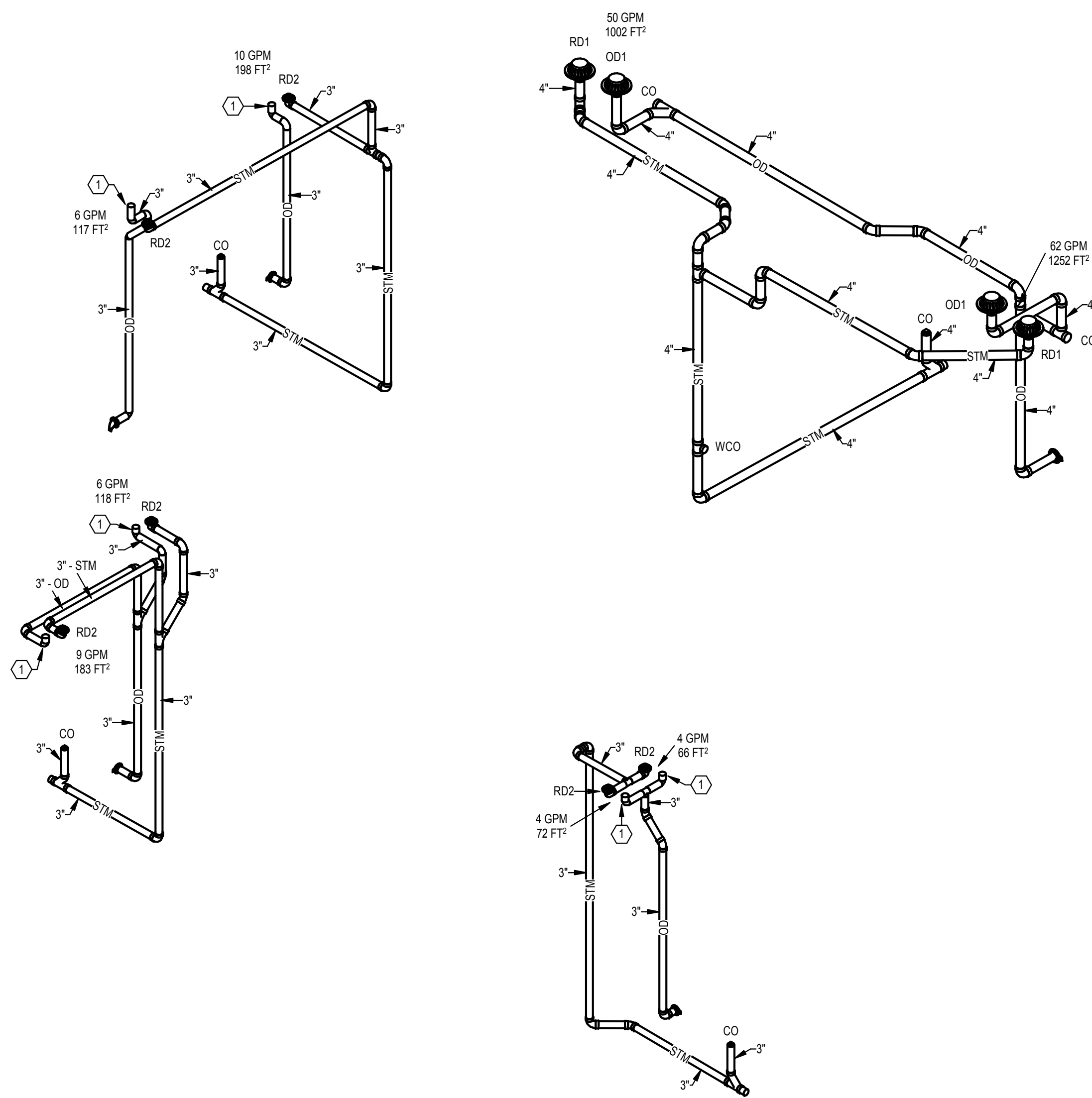
This document is the product and property of Baker Model Donnelly Preston, Inc. Neither the document nor the information it contains may be copied or used for other than the specific project for which it was prepared without the written consent of Baker Model Donnelly Preston, Inc.



1 PLUMBING ISOMETRIC - SOIL, WASTE AND VENT



2 PLUMBING ISOMETRIC - DISTRIBUTION



3 PLUMBING ISOMETRIC - STORM

PLAN NOTES

- 3" OD PIPE TO SERVE AS SECONDARY ROOF DRAIN. PIPE SHALL TERMINATE 2" ABOVE RD2 INLET LEVEL. PROVIDE PIPE TERMINATION CAP WITH MESH SCREEN. SEAL CANOPY PENETRATION WEATHER TIGHT.

BHDP ARCHITECTURE
1815 W. 11TH STREET
SUITE 200
CHARLOTTE, NC 28202
PHONE 813.377.1634
WWW.BHDP.COM

COLUMBIA
BHDP
ARCHITECTURE
1815 W. 11TH STREET
SUITE 200
CHARLOTTE, NC 28202
PHONE 813.377.1634
WWW.BHDP.COM

FIFTH THIRD BANK - BECKER ROAD BRANCH NEW
CONSTRUCTION
SE BECKER RD
PORT LUDIE, FL 34984
PLUMBING ISOMETRICS

Project Manager
MJM
Drawn
ALO
Checked
DJT
Initial Drawing Date
04.01.2024
Project Number
FIF21.94

P200



P: 937-224-0861 www.heapy.com
PROJECT NO. 2023-07201